

FROM THE DESK OF THE PRESIDENT

► BY **NANCY SISLOW**
BOARD PRESIDENT

Since the start of the year, the Board has been working on a plan to manage the amenities for the future with a goal to hopefully reduce or eliminate dues. Carrying out a big change in the income supporting the amenities may take more time than we would like but ensuring the recreational amenities remain in Diamondhead is the priority. The plan we are working on is based on past surveys that indicate three areas as the most important to those completing the survey. We are attempting to structure the three amenities (the golf courses, Club House, and pools) in such a way that they are supported by voluntary memberships that cover the cost to operate and maintain them. We hope to have some trial data by late summer and be able to provide a firm plan by year-end so that the entire community is aware of the options to pay for use. We are meeting weekly and consulting our resources to try to set this plan in motion.

As you may be aware the unsettled nature of the current POA has led some households to stop paying their dues through month-

ly payments which has led to income that is less than budgeted. The Board met on March 2nd and 9th to work with the General Manager to manage changes needed to keep the amenities financially supported. We continued our review of the potential sales of the Tennis Club and of the valuation provided for the RV storage and Marina. We authorized expense reductions as suggested by the GM and business consultant. These actions have helped support the amenities into the fall.

Challenging times continue. We are trying to balance the budget of the organization, ensuring the POA ends 2026 with a positive balance, while we plan for 2027. We cannot make change immediately as we have collected dues for 2026 and must continue to maintain the amenities as demanded by the POA charter. It is hoped that members will continue to support the current POA despite the unsettling nature of change. We anticipate that the future will operate

differently but imagine Diamondhead will continue to have all its recreational amenities into the future if we develop a reasonable plan.

The Board of Directors thank you for the opportunity to serve the POA.

Easter BUFFET April 5, 2026

MADE TO ORDER OMELET STATION

Omelets prepared your way. Choice of premium meats, cheeses, and garden vegetables.

CARVING STATION

- Sweet Chili Salmon
- Herb-Seasoned Stuffed Pork Loin
- Herb-Crusted Hanger Steak

EASTER FAVORITES

- Squash Casserole
- Tuscan Roasted Potatoes
- Southern-Style Green Beans
- Bacon Ranch Macaroni & Cheese
- Marinated Grilled Chicken
- Honey-Glazed Ham
- Smokehouse Baked Beans
- Sweet Potato Casserole

SEAFOOD STATION

- Boiled Shrimp
- Crispy Fried Catfish
- Stuffed Crabs

SOUPS/SALADS

- Build Your Own Salad
- Pasta Salad
- Potato Salad
- Deviled Eggs
- Seafood Gumbo
- Roasted Red Pepper Soup
- Assorted Bread

DESSERTS

- Warm Peach Cobbler
- Assorted Holiday Desserts

Seatings at 10:00, 12:00, & 2:00
Call 228-255-2918 ext. 3 for reservations
Adults - \$44. Children 5 - 10 \$18, 4 & Under Free
Discount available for POA members

THE CLUB
DIAMONDHEAD

Diamondhead News

The Diamondhead News is the ONLY official voice of the Diamondhead Country Club and Property Owners Association, Inc. As such, it is solely responsible for its content. The Diamondhead Property Owners Association, Inc. will maintain sole control of the editorial content. A monthly publication by the Diamondhead P.O.A.; offices are located at 7610 Country Club Circle, Diamondhead, MS 39525.

ALL SUBMISSION REQUESTS MUST BE SUBMITTED BY THE 15TH OF EVERY MONTH.

- **EMAIL: DHNEWS@DHPOA.ORG**
- **TELEPHONE: 228-255-1900**
- **EDITOR: CANDICE SEITZ**

Subscription info: DHPOA Membership 255-1900
The Sea Coast Echo will be responsible for production, printing, advertising and distribution (by mail) of The Diamondhead News. For advertising, call 228-467-5473.

POA BOARD OF DIRECTORS

Nancy Sislow (president) 847-271-7474 nsislow@dhpoa.org	Ernest Lee (director) 832-465-9072 elee@dhpoa.org
Trey Giarrusso (vice president) 504-460-1717 tgiarrusso@dhpoa.org	Bob Pineau (director) 734-347-2897 bpineau@dhpoa.org
Brice Howard (treasurer) bhoward@dhpoa.org	Patricia Burgoyne (secretary) 504-669-2541 pburgoyne@dhpoa.org
Dr. Arlen "Ken" Griffey (director) 228-216-4447 kgriffey@dhpoa.org	Michael Tubbs (director) 757-817-5917 mtubbs@dhpoa.org
Stuart Nutting (director) 228-363-2549	Gary Becker (ex officio) 813-215-2761 gbecker@dhpoa.org
Ronnie LaFontaine (director) 228-671-9169 riafontaine@dhpoa.org	

ASSOCIATION STAFF

Hoppy Smith.....	General Manager
Darrion McInnis.....	Controller
Candice Seitz.....	Managing Editor
Chris Altese.....	Director of Golf
Dan Hamman.....	Golf Superintendent
Adam Humphrey.....	Facilities Superintendent
Dianne Simonson.....	Harbor Master
Nancy Perkins.....	Sales & Marketing
Andrea Jones.....	Legal/HR Administrator

EXTENSION DIRECTORY

POA Office	255-1900 or 1-800-321-3840
Fax	255-4296
Airport	255-0502
Facilities Maintenance	255-3343
Country Club	255-2918
19th Hole.....	255-5005
Fire District/Emergency 911/Business	255-1314
Golf Pro Shop.....	255-3910
Golf Tee Times	255-5517 or 1-800-346-8741
Marina	228-216-9059
Personnel	255-1900 ex-123
Diamondhead Water & Sewer District	255-5813
Tennis World	255-5030
Waste Collection	832-3144

Diamondhead Country Club & Property Owners Association, Inc.

February 28, 2026

	Revenue	Expense	Net Gain/Loss	Depreciation	Net Income
Club	229,460.89	265,068.66	(35,607.77)	4,164.71	(39,772.48)
Camphouse	6,500.00	3,604.83	2,895.17	3,709.82	(814.65)
Golf	220,097.61	54,366.85	165,730.76	7,214.75	158,516.01
Golf Academy		7,487.43	(7,487.43)	-	(7,487.43)
GCM		145,519.98	(145,519.98)	18,138.57	(163,658.55)
Grounds		22,888.39	(22,888.39)		(22,888.39)
Recreation	185.00	14,818.98	(14,633.98)	5,946.38	(20,580.36)
Community/Twin Lakes		1,952.63	(1,952.63)	-	(1,952.63)
Tennis	3,500.00	1,226.42	2,273.58	3,883.16	(1,609.58)
Marina	6,660.47	6,631.61	28.86	5,491.21	(5,462.35)
Facilities		21,882.89	(21,882.89)	771.68	(22,654.57)
Marketing		16,237.03	(16,237.03)	-	(16,237.03)
Admin	6,170.00	62,176.21	(56,006.21)	12,908.45	(68,914.66)
Membership	251,413.48		251,413.48	-	251,413.48
Airport		170.26	(170.26)		(170.26)
RV Storage	4,585.00	422.60	4,162.40		4,162.40
	728,572.45	624,454.77	104,117.68		41,888.95

January 1, 2026 - February 28, 2026

	Revenue	Expense	Net Gain/Loss	Depreciation	Net Income
Club	482,674.07	539,237.44	(56,563.37)	8,329.42	(64,892.79)
Camphouse	13,000.00	9,174.68	3,825.32	7,419.64	(3,594.32)
Golf	400,692.92	106,210.85	294,482.07	14,429.50	280,052.57
Golf Academy		15,001.23	(15,001.23)	-	(15,001.23)
GCM		291,352.55	(291,352.55)	36,277.14	(327,629.69)
Grounds		45,902.72	(45,902.72)		(45,902.72)
Recreation	235.00	32,323.57	(32,088.57)	11,892.76	(43,981.33)
Community/Twin Lakes		3,012.69	(3,012.69)	-	(3,012.69)
Tennis	7,000.00	2,459.29	4,540.71	7,766.32	(3,225.61)
Marina	14,951.33	12,530.20	2,421.13	10,982.42	(8,561.29)
Facilities		41,897.05	(41,897.05)	1,543.36	(43,440.41)
Marketing		36,854.54	(36,854.54)	-	(36,854.54)
Admin	9,269.14	141,874.76	(132,605.62)	25,816.90	(158,422.52)
Membership	471,604.48		471,604.48	-	471,604.48
Airport		304.27	(304.27)		(304.27)
RV Storage	9,370.00	926.65	8,443.35		8,443.35
	1,408,796.94	1,279,062.49	129,734.45		5,276.99

The **POA** Board meets every month on the 3rd Monday at City Hall. All meetings begin at 6:00pm. Every meeting is live-streamed and can be found on YouTube.



• COMMUNITY

What's Happening at Your Library in **APRIL?**

► **BY: SAVANNAH STEWART**

Welcome to April! Spring is finally here, and we are so excited to be partnering with the city for the opening of Diamondhead's new dog park, located across the street from the East Hancock Library! The dog park is set to open April 4th, with a ribbon cutting, pictures with the Easter Bunny, and a library sponsored Easter egg hunt! The East Hancock library is also partnering with the Visiting Pet Teams of Mississippi for Sit,

Stay, Read where children will have the chance to gain confidence and independence in their reading skills as they read to the therapy dogs! It's going to be a busy but exciting Saturday, and we hope to see you all there!

Our regular programming continues to offer opportunities for learning, creativity, and connection throughout the week. Join us every Monday from 10:30–11:30 a.m. for Story Time and Crafts, a joyful hour designed to support early litera-

cy and social development in young children while fostering a lifelong love of reading. On the first and third Mondays, we host Painting with Elen, and she also leads Conversations in Spanish for adults every Thursday from 2–3 p.m., offering a relaxed and welcoming environment to practice language skills. On the second and fourth Mondays from 2–3 p.m., our new informal book club gathers for lively conversation; there is no required reading, and participants are encouraged to share and dis-

cuss whatever they are currently enjoying. The library also hosts Family Bingo Night every second Thursday of the month (April 9th) from 4-5:30pm, with light refreshments available!

Fridays offer opportunities for both movement and creativity. Strength and Flexibility meets from 10 a.m.–12 p.m. and is an instructor-led, seated fitness class ideal for older adults and patrons with disabilities

who are looking for gentle movement and stretching. Participants are encouraged to bring water and wear comfortable clothing. Later in the afternoon, from 1–3 p.m., we host Crafts and Conversation, a relaxed, come-and-go gathering where community members bring their own projects and enjoy crafting alongside fellow creatives. There is no formal instruction—just good company and engaging con-

versation.

The library offers the regular use of our meeting room on a first-come first-serve basis with our weekly and monthly established groups taking priority when it comes to reservations. If you are interested in using the library's meeting room for your group or organization, you may submit a reservation request through the library's calendar located on our website at hcls.info.

DIAMONDHEAD Senior Village

► **BY MARY GOBERT**

Here's hoping March brought you a fun St. Patrick's Day and a blessed and happy Easter, among all the other things you were busy doing. Time to gear up for April activities and we are ready at Senior Village, so come one, come all! We are located across from Woodland Village Nursing Home in the building on the right as you enter the complex. Activities are from 10-12 every Tuesday with a Field Trip thrown in here and there, like our awesome March Field Trip to the Justice Court and the County Jail. We learned a lot that day! Here's the calendar for April.

April 7 Bingo and Bon-

gos! Bingo with prizes at 10, followed by Cardio Drumming at 11. After all that fun, it's Lunch Bunch time. This is an optional Dutch Treat trip to a local restaurant to continue the conversation. Everyone has gotten so much better acquainted during these lunches. Winner, winner chicken dinner, so to speak, LOL.

April 14 Physical Therapy talk at 10. The talk will be on balance and preventing falls, followed by a short Q&A time. At 11, it's water color painting with LeAndra. All materials and instructions are provided for the water color picture.

April 21 POA President Nancy Sislow will speak and answer questions at 10. It will be an

excellent opportunity to get information directly from the POA. At 11, we'll celebrate March birthdays. Aaaaand it's cake time!

April 28 Bob and Barbsing for us at 10. Come enjoy all the songs you know by heart, and even some you don't. At 11, it's Tech Talk. Bob will take off his music hat and put on his technology hat and keep on going. His sessions about your phone are always interesting and everyone gets a lot of questions answered. Don't miss it!

And that will take us to the end of another informative and fun month. We hope to see you soon at any or all of the activities. Remember, it takes a (Senior) village!

Home & auto.
Bundle & save.

Call me for a quote today

State Farm

Mike Meyers

Agent

835 Highway 90

Bay St. Louis, MS 39520-1630

Bus: 228-467-5011

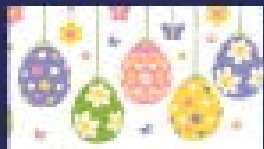
mike@mikemeyers.us

Availability and amount of discounts and savings vary by state.

State Farm Mutual Automobile Insurance Company, State Farm Indemnity Company, State Farm Fire and Casualty Company, State Farm General Insurance Company, Bloomington, IL

State Farm County Mutual Insurance Company of Texas, State Farm Lloyds, Hoboken, NJ

State Farm Florida Insurance Company, Winter Haven, FL



COLDWELL BANKER
ALFONSO
REALTY, INC.

Diamondhead Office
4399 Gex Rd.
228-355-0255



*Need a new yard to
hide all those eggs?*

Let's get HUNTING!

Our friendly agents are available to assist
you with your buying and selling needs.

Give us a call and

HAPPY
Easter



Looking to BUY or SELL in Diamondhead?

We live, work & invest right here in
our community...bringing local
expertise, national resources & a
personal touch to every transaction!



Residential



Commercial



Property
Management



alfonso.com



6937 Hilo St. | Diamondhead
2 Bed | 2 Bath | 1000 sqft | \$249,000
Wonderful home for
entertaining. Unique Hawaiian
style with wooden bar &
kitchen combo. Large loft
upstairs with skylight - great
for 3rd bedroom or office, has
studio above carport & a sun
room. Wood-burning fireplace
in den, leading to small side-
deck. Carport with enclosed
storage area and attic storage.



Carmen Ferris, REALTOR®
D: 228-342-1184 | O: 228-355-3358
carmenferris14@gmail.com

COLDWELL BANKER | ALFONSO REALTY, INC.



NEW PRICE
Patriot Ln Lot #15
Pass Christian
0.14 Acres \$ 32,000
Exclusive area of gorgeous homes
at the end of Patriot Lane. Near
golf course and beaches. Pass
Christian Info Subdivision.
(601 x 1201)

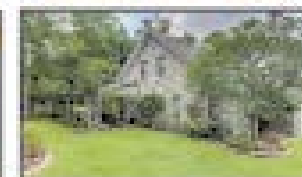
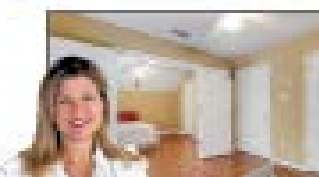
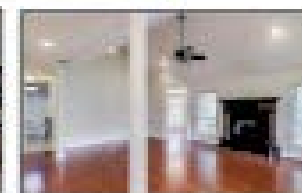


5719 Ancof Way | Diamondhead
3 Bed | 2.5 Bath
2,580 sqft | \$268,000

- Freshly painted!
- Thoughtfully updated!
- Move-in-ready!
- Hardwood floors 2025!
- Propane fireplace!
- HVAC less than two years old!

Notable Features:

- State and Federal-approved hurricane fortifications, including certified impact-rated windows, steel storm shutters, and roof all less than 10 years old
- Whole-house Kohler 20kW generator
- Fully equipped with refrigerator, new washer, dryer, outdoor gas grill, & all patio furniture for front & back porches
- One-year home warranty.



Kelly Rogers, REALTOR®
228.870.8377 Cell | 228.287.1000 Office
realtorkellyrogers@gmail.com | Kelly228.com



Are you thinking about selling?
Call me to get a *free estimate*
of your homes value.



This time of year is a perfect time to list!

Courtney Stanley, REALTOR®
Direct: (228) 222-7155
Office: (228) 467-0244
CourtneyStanleyRealtor@gmail.com

COLDWELL BANKER | ALFONSO REALTY, INC.



Lindsey Lind

CBX, REALTOR®

D: 228-216-8512 | O: 228-467-0244

lindseylindrichard@gmail.com



COLDWELL BANKER

ALFONSO
REALTY, INC.



131 Northwood Drive | Pass Christian
3 Bed | 2 Bath | 1,718 sqft | \$265,900



8428 Ielke Drive | Diamondhead
4 Bed | 2.5 Bath | 1,822 sqft | \$273,000



0 Golf Club Drive | Diamondhead
0.27 Acres | \$18,000

321 State Street | Bay Saint Louis
2 Bed | 1 Bath | 1,386 sqft | \$449,000
Adorable 1980's cottage in the heart of the Historic District of Bay St. Louis. Light, bright & cheery with hard wood floors throughout. Enjoy your morning coffee or evening cocktail on large covered porch overlooking the yard. High elevation & X Flood Zone. Detached 2-car carport & two storage sheds, as well as a sunken Florida room with a bonus fridge & wet bar. Perfect for entertaining or an artist's studio!



814 Camellia Dr. | Bay St. Louis
3 Bed | 2 Bath
1,200 sqft | \$289,000



4300 Firetower Road | Kiln
3 Bed | 2 Bath | 1,825 sqft | \$329,000

Come by & see this Beautiful Brand New Construction home in Kiln, MS! Features split bedroom floorplan with spacious master suite & soaking tub. Vinyl Flooring, Granite Countertops, Stainless Appliances, ample storage, & great closets are just a few features in this home. The builder thought of every detail! Sits on just under one acre.



12009 Circle G Ranch Road | Picayune
3 Bed | 2 Bath | 1,989 sqft | \$347,900

One of a kind Updated home. Split Bedroom floorplan, Great Master Suite, Formal Dining room, Laundry Room, Granite throughout & natural Wood Floors are just a few things this home includes. Offering enough land to give you the feel of privacy & only 12 minutes from town! Enjoy the beautiful sunsets over the lake and fish in your own backyard.



9520 Kalikimaka Place | Diamondhead
4 Bed | 5 Bath | 3,098 sqft | \$359,000



1303 Waveland Ave. | Waveland
0.29 Acres | \$19,000

Cleared Lot ready for a new Home! Within Blocks of Beautiful Beaches of the MS Gulf Coast & Golf Cart ride to Old Town Bay St. Louis

Coastal getaway with open living & kitchen area, spacious bedrooms, stainless appliances, new decking & plenty of natural light! Ample parking, new bulkhead, elevator & dock.



COLDWELL BANKER

ALFONSO
REALTY, INC.



Betsy Montjoy

D: 228-547-2856

O: 228-467-0244

Where historic charm meets modern day living!



315 Main Street
Bay St. Louis

Prices starting at \$339,000



★ ★ ★ ★ ★
**5 star rating on Internet
Real Estate Sites**



326 S Central Avenue
Waveland
3 Bed | 3 Bath | 1367 sqft |
\$214,000

Charming Ranch Home with spacious layout and on a corner lot. Features: living room, eat-in kitchen, full-sized laundry room, master suite with en suite bathroom, neutral colors throughout, large, fenced-in backyard with shed. Home is move-in ready and is a perfect blend of comfort & convenience! Schedule a viewing today!



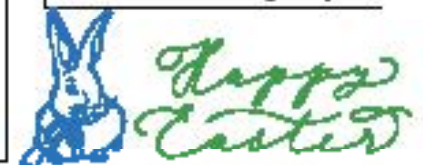
103 Saint Joseph St | Waveland
0.15 Acres | \$145,000

This lot not only promises the potential for a custom-built home but also the opportunity to embrace the coastal lifestyle in a community that seamlessly blends convenience with natural beauty and downtown Waveland.

THIS BEAUTIFULLY RESTORED LANDMARK HAS BEEN THOUGHTFULLY REIMAGINED TO PRESERVE ITS TIMELESS CHARACTER WHILE OFFERING ALL THE COMFORTS OF CONTEMPORARY LIVING. EACH RESIDENCE FEATURES A UNIQUE LAYOUT. WHETHER YOU'RE SEEKING A FULL-TIME RESIDENCE, A WEEKEND GETAWAY, OR A SHORT-TERM RENTAL OPPORTUNITY, 315 MAIN STREET HAS SOMETHING EXCEPTIONAL TO OFFER.

OUR FEATURES

- 1 TO 2 BEDROOM UNITS
- 10-FOOT CEILINGS & DESIGNER LIGHTING
- STAINLESS STEEL APPLIANCES & STONE COUNTERTOPS
- STACKABLE WASHER/DRYER
- ENERGY-EFFICIENT HVAC SYSTEM
- LUXURY VINYL FLOORING
- PRIVATE BALCONIES
- FULLY FURNISHED - RIGHT DOWN TO THE SILVERWARE!





Brent Allison
D: 228-216-1269
O: 228-255-3550



6149 Pontiac Dr
Kiln, MS 39558
5 bed / 3 bath / \$835,900



(228) 255-5288

CALL TO MAKE AN APPOINTMENT



123 Lakeside Villa
Diamondhead
STUDIO UNIT \$1250.00

Wonderful studio condo in Lakeside Villa of Diamondhead. Completely Upgraded and Fully Furnished with all the amenities of home. Plank flooring, beautiful wood countertops, subway tile backsplash, stainless appliances, large walk in shower...So much to offer. \$1250 for 12 months, \$1300 for 8 months, & \$1350.00 for 3 months add electricity for \$100 additional.

For other rentals:
alfonsopm.com



98191 Kapalama Dr. Diamondhead
3 BR, 2 Bath Rent: \$1750.00

This Home has NO REFRIGERATOR...This All Brick Home Features A Double Car Garage, Fireplace, Large Kitchen, Family room with fireplace, Split plan with primary on the back of the house. Owner prefers No Pets...

COLDWELL BANKER
ALFONSO REALTY, INC.

Beautiful riverfront home built in 2021 with stunning Jourdan River views, composite porches, bulkhead, boat lift with upper deck, & natural sandbar across the river. Features an open split plan, quartz kitchen, stainless appliances, & serene primary suite. Metal roof, ample parking, & furnishings negotiable. A rare move-in-ready retreat minutes from I-10.



Lynn Grego
D: 228-223-9903
O: 228-255-3550



208 Lakeside Villa
Unit A | \$73,000



End unit, it features abundant natural light and has been thoughtfully updated with new carpeting, a new water heater, and ceramic tile flooring, including a ceramic-tiled shower



Choctaw Place | Kiln
0.25 Acre | \$17,500

Jordan River Shores lot cleared filled & ready to build your dream home or camp site. Nestled in a cul-de-sac with few trees. Make this property your new home site of choice. Owner will finance. Minutes from I-10 and sunny beaches.



8820 Manoo Place | Diamondhead
2 Bed | 2 Bath | 1536 sqft | \$266,500

Updated home on peaceful cul-de-sac. Recent updates include: new flooring, new sheet rock throughout, fresh interior & exterior paint, updated molding & baseboards, new outlets, cabinetry, new windows, plumbing fixtures, light fixtures, a stylish new front door & quartz countertops, brand-new appliances, new commodes, sinks, & vanities. There is a newly installed sidewalk & lush new grass. HVAC system is only 2 years old & roof is just 3 years old! One year termite treatment



COLDWELL BANKER ALFONSO REALTY, INC.



Gina Bradley
D: 985-290-0280
O: 228-255-3550

Call me today to discuss
BUYING, SELLING
OR
INVESTING!

NEW LISTING!!!



3776 River Trace Drive
D'Iberville
4 Bed | 3.5 Bath
2496 sqft | \$337,000

Spacious Family Home or Investment Opportunity in D'Iberville This beautiful 4-bedroom, 3.5-bath home offers the perfect blend of comfort and convenience. Featuring an oversized bonus room, it provides plenty of space for a growing family or flexible living arrangements. The large, well-maintained fenced yard is ideal for outdoor activities and entertaining. Located just behind the Promenade Mall, this home is close to shopping, dining, and entertainment, all within a highly sought-after school district. A must-see property that combines location, space, and value — perfect for families or investors alike.



134 Demonfuzin Ave. | Bay St. Louis
2 Bed | 2 Bath | 1189 sqft | \$575,900

SELLER WILL CONSIDER ALL REASONABLE OFFERS!!!!!!

New Orleans Charm in the Heart of Bay St. Louis! Discover the perfect blend of Southern elegance & modern comfort in this stunning home, situated within walking distance of the beachfront. Located on one of Downtown's most sought-after streets, this newer home radiates timeless charm & offers spacious, contemporary living. Just steps from the lively heart of the Bay, enjoy easy access to local restaurants, boutique shops, & entertainment. Inside, soaring ceilings, detailed moldings, & durable waterproof laminate flooring set the tone for refined yet relaxed living. Furnishings are negotiable, offering flexibility for a move-in-ready experience.



Commercial



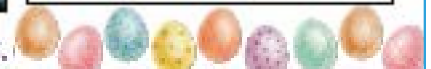
Live Oak Avenue | Lot #76
Pascagoula
Offered at \$39,000



OVER 2 ACRES

Frank Griffin Road
Moss Point
Approx. 2.1 Acres
Offered at \$49,000

COLDWELL BANKER ALFONSO REALTY, INC.



• CHURCHES

ST. THOMAS EPISCOPAL CHURCH

5303 Diamondhead Circle
Diamondhead, MS 39525-3203
(228) 255-9213
mail@stthomasdiamondhead.org

WORSHIP TIMES

Sunday 9:00 am Holy Eucharist followed by Hospitality Hour
Wednesday prayer service and potluck dinner 5:30pm weekly
Caring for a spouse or loved one with dementia or a long-term illness can be a journey filled with love, devotion, dedication, and often, deep exhaustion. If you are walking this path, please know, you are not alone.

St. Thomas Episcopal Church is hosting a Caregiver Support Group created especially for anyone who is caring for a loved one with dementia or chronic illness. This group will offer a compassionate, safe, and confidential space to share experiences, receive encouragement, and connect with others who truly understand the unique challenges and emotions that come with caregiving.

Our time together will include:

- Open and confidential conversation
- Emotional support and understanding
- Practical coping strategies and resources
- Encouragement and hope

Whether you are feeling overwhelmed, isolated, or simply in need of community, you are welcome here.

Date: April 8, 2026

Time: 2:00

Location: St. Thomas Church, 5303 Diamondhead Circle

If you would like more information please contact Cornelia Swayze 228-363-2211, or St. Thomas Church at 228-255-9213.

Taking care of yourself is not a luxury or an option. It is essential! We hope you will join us.

DIAMONDHEAD COMMUNITY CHURCH

5301 Diamondhead Circle
(288) 255-5556
dhcommunitychurch.org

Worship Service

Please join us on Sundays at 10 am for worship services with Pastor Stan Van Den Berg.

Christian Education

We have Sunday school classes at 9 am for adults as well as children (by age group). In addition, Children's Church is held during

a portion of the worship hour.

Nursery Care

Nursery care is provided between 9 and 11 am.

Fellowship

All are welcome to join us for snacks and Christian fellowship at 11 am following the worship service.

Children's Choir

Parents, we offer exciting opportunities for your children ages 5-12 and 13-17 to participate in our youth choirs.

Pre-School

Little School is still taking 2025-2026 registration. Little School hours are 8 am-12pm

Mon – Fri. We still have a few spots open.

DIAMONDHEAD METHODIST CHURCH A GLOBAL METHODIST CHURCH

5305 Noma Drive
Diamondhead, MS 39525
Office: 228-255-6888

Sunday Worship Service: 10: a.m.

Meet and Greet Sunday: 9:30 to 9:55 a.m.

"Greetings! In the name of our Lord Jesus the Christ! We welcome all who are new or looking for a dynamic worship experience.

Our new pastor, Reverend Shelley Hill is here and we are delighted with the wonderful things happening through the guidance of the Holy Spirit.

We welcome and encourage everyone regardless of current or former denominational involvement, hazed or inflicted upon by Past "Christian" association or even socially shunned. We are a growing home of God to be shared by all who attend. We currently meet for 2 women's, 2 men's, 1 co-ed and multiple opportunities for gathering activities in His name throughout the week!

All meetings are here at the church.

email: office@diamondhead-methodistchurch.org, Facebook: Diamondhead Methodist Church
Website: www.diamondhead-methodistchurch.org (under construction)

JACOB'S WELL BAPTIST CHURCH

29554 Vic Faye Road, Pass Christian, MS 39571;
228-255-2555,
jwbcadmin@icloud.com

Sundays:

Worship = 8:45 a.m. & 11 a.m.

Bible study = 10 a.m.

Wednesdays:

Fellowship meal, 5:45-6:20 p.m.

Adult & Youth Bible study, 6:30-7:30 pm..

Children's Awana Program, 6:30-7:30 p.m.

Nursery care at all services

"Called to magnify God, make disciples, and minister to people"

ANNUNCIATION CATHOLIC CHURCH

5370 Kiln-DeLisle Rd. Kiln, MS 39556

(228)255-1800 www.annunciationkiln.com

Masses: Saturday Vigil 4:00

p.m.; Sunday 8:00 a.m. and

10:30 a.m.; Weekday 8:00 a.m.

(Chapel)

Sacrament of Reconciliation:

Saturday 3 p.m. to 3:45 p.m.;

Sunday 9:45 a.m. to 10:15 a.m.

and other times by appointment.

Adoration: Tuesday 8:30 a.m.

to 8:00 p.m.; Friday 8:30 a.m. to

9:30 a.m.

LUTHERAN CHURCH OF THE PINES

309 Highway 90
Waveland, MS 39576
228-467-6771

Pastor Brock Cain

Services every Sunday morning

are at 10:00 a.m.

Sunday School for children and

adults at 9:00 a.m.

Every Wed., we offer Bible

study at 1 p.m.

OLD TOWN PRESBYTERIAN CHURCH, PCUSA

114 Ulman Ave.

Bay St. Louis, MS 39520

Pastor: Rev. Richard T. Gillespie, Th.D.

Phone: 256-443-4100 Website:

oldtownpresbyterian.org

Sunday Services:

9 am Adult Sunday School

10 am Worship Service

Children's Church, ages 5-12

11 am Hospitality for all in our

Fellowship Hall

Open Table Communion - first

Sunday each month

Presbyterian Women's Monthly

Bible Study

Join us as we share the Gospel,

bear witness to Christ's love, and

work for justice, peace, and care

of the world and its resources.

CENTRAL BIBLE CHURCH

You're Invited to Join Us for Worship!

Central Bible Church in Bay St.

Louis (across the highway from

the BSL Post Office)...the home

of The King's Kitchen soup kitchen.

Sundays at 9:30 AM for Sunday

School and 11:00 AM for morning

worship. Wednesdays

at 6 PM for Youth services.

Senior Pastor: Rev. Mike Ramsey, Th.D.

Outreach Pastor: Rev. Connie Lyons

Church Office: (228) 493-4796

"Where the Ministry of the Holy

Spirit takes place under the

Lordship of Jesus Christ to the

glory of God the Father!"

THE CHURCH AT 112

Romans 1:12 -- "When we get together,

I want to encourage you in your faith,

but I also want to be encouraged by yours."

(NLT)

17077 Kapalama Dr., Suite B
Pass Christian, MS 39571

Pastor: James Reardon

Email: james@c112.org.

Our mission is to help encourage

the people of Diamondhead and

the surrounding areas towards

faith in Christ. Our desire is to

minister to both the unchurched

(those with little or no church

experience) and those we call the

de-churched (individuals who

have been hurt in the past or dis-

illusioned by the actions of some

within a church setting).

Join us in worship -- Sunday at

10 a.m.

We also extend an invitation for

you to attend one or more of

C 112's monthly activities and

events. We offer men's, women's

and mixed small groups/Bible

studies; children, youth, and

family activities. Please check

out C 112's regularly updated

Facebook page and our website

to find out the time, place and

description of the events in

which you are most interested.

Facebook: C112

Website: c112.org.

Download C112 app: C112

MOST HOLY TRINITY CATHOLIC CHURCH

9062 Kiln Delisle Road

Pass Christian, MS 39571

228-255-1294

Email: admin@mhtcatholic.org

Website: http://mhtcatholic.org

Mass Times:

Monday – Friday: 8:00 a.m.

Saturday: 4:00 & 6:00 p.m.

Sunday: 7:30, 9:00, 11:00 a.m. &

7:00 p.m.

Greetings! Please join us for the

following events. All are welcome!

UPCOMING YOUTH ACTIVITIES

APRIL-JUNE 2026

MAY

1
POOLS REOPEN

9
Mother's Day Event
1PM-4PM
The Club at DH

12
"Encanto"
Movie Night
6PM-8PM
The Club at DH

28
Pool Party
Ages 14-18 Only
10AM-4PM
Pool TBD

APRIL

14
Live Action "Lilo & Stitch"
Movie Night
6PM-8PM
The Club at DH

18
Lego Build-a-Thon &
Lego Movie
6PM-8PM
The Club at DH

24
Art Gala
6PM-8PM
The Club at DH

JUNE

9
"Finding Nemo"
Movie Night
6PM-8PM
The Club at DH

13
Father's Day Event
TBD
The Club at DH

For information: See individual flyer, Follow or Facebook page, or Call 228-255-2929!

• COMMUNITY

Life Scout Aaron Moran Project Toward Eagle Scout Rank

► BY MICHAEL BURKE

Aaron E. Moran, age 17, is a Life Scout with Scouting America Troop 210 in Diamondhead, Mississippi, and is currently working on his final project to attain the rank of Eagle Scout. Aaron has been involved in Diamondhead Scouting since first grade at Hancock East Elementary, when another scout invited him to join the local Cub Scout pack. That invitation started Aaron

on the path toward Eagle Scout. While many youth in Diamondhead begin their Scouting journey, only a select and highly motivated few ultimately achieve the prestigious rank of Eagle Scout. For his Eagle Scout service project, Aaron is working to provide the citizens of Diamondhead with a second U.S. flag retirement drop box. The desired location for the box is Mualuhia Garden Park, near the Blue Star Veterans Memori-

al. As Aaron continues planning and implementing his project, he has been supported by community donations of worn U.S. flags and collecting donations to help cover the cost of materials needed for a drop box. Many residents may have seen Scouts throughout the community as Aaron coordinated flag collection drives at Rouses Market, the Hancock High School Car Show, and Dixieland Farm & Garden, with more to

follow. Feel free to follow the journey of Diamondhead scouts at our Facebook location: <https://www.facebook.com/BSATroop210MS> This author hopes to one day have the opportunity to write an Eagle Scout project review for your youth or grandchildren. Young people in Diamondhead are always welcome to join the local Cub Scout pack or Troop 210 and begin their own Scouting journey. We welcome all youth



LIFE SOUT PIC CAPTION: **Diamondhead Scouts participate in a Flag Drive to include Odin Henderson, Evan Moran, Dean Necaize, Aaron Moran, and Aaron Oliver.**

to follow the same path of service, leadership, and character that Life Scout Aaron Moran and his fellow Scouts strive to achieve—the path to Eagle.

— VFW POST 2880

LAUNCHES FOOD DRIVE TO SUPPORT VETERANS AND LOCAL FAMILIES



► BY MICHAEL BURKE

FamiliesDiamondhead, Miss. — Veterans of Foreign Wars Post 2880 in Diamondhead is organizing a 2026 community food drive to support veterans and local families experiencing food insecurity across Hancock County.

Donations of non-perishable food items may be dropped off at The Club at Diamondhead and Diamondhead Ace Hardware, which have partnered with the VFW to serve as collection points for the effort. The initiative is being conducted in coordination with Humana's Uniting for Veterans program, a national effort aimed at improving food security for veterans and their families. Through this partnership, the VFW hopes to gather much-needed supplies that will directly benefit veterans throughout Hancock and Harrison counties, while also supporting others in the local commu-

nity who may be struggling. Last year's Post 2880 efforts supported Humana, King's Kitchen, and the VA as recipients. VFW leaders emphasized that the food drive is part of a broader community effort and encouraged residents to support any local organization working toward the same goal. "Several groups in our area are currently conducting food drives," organizers said. "We encourage residents to give to any of the local groups participating. Diamondhead is stronger when we all work together to support those who are in need." The Post is also continuing its work at the

Mualuhia Garden Blue Star Memorial, where the 2025 shipment of memorial bricks has recently arrived. The bricks will be installed during the next garden clean-up and day of service scheduled for May 2, 2026. Individuals interested in honoring a veteran or loved one may purchase a memorial brick by scanning the QR code provided. Veterans who are eligible and interested in joining VFW Post 2880 are invited to attend monthly meetings held at 6 p.m. on the first Wednesday of each month at The Club at Diamondhead. Correction: In a January 2026 article covering the Veterans of Foreign

Wars Donald Crosby Memorial Voice of Democracy and Patriot's Pen Scholarship Competitions, this author incorrectly listed Mr. Crosby's middle initial. His correct name is Donald W. Crosby, with the "W" standing for Wayne. The author apologizes for the oversight and mistake.



• COMMUNITY

Friends of The Animal Shelter – Spay/Neuter

► **BY AMY LONGO**

Friends of the Animal Shelter was formed in 2001 by a group of concerned citizens who wanted to end euthanasia as a means of controlling animal overpopulation. To pursue that goal, FRIENDS started the No Cost Spay/Neuter Program where any pet owner in Hancock County can obtain a voucher to have their pet

dog or cat fixed at no cost and receive a rabies shot. This program has been extremely successful in preventing pet overpopulation.

During 2025, Friends of the Animal Shelter spent a total of \$130,003 to provide No Cost Spay/Neuter and rabies vaccinations to 1,733 pets in Hancock County. FRIENDS has had a robust Spay/Neuter program going for the past 8 years and seen

reductions in the number of animals admitted to Hancock Animal Shelter each year as a result of this program. Hancock Shelter has seen admissions drop from 1,846 in 2017 down to 1,033 in 2025 - a reduction of 44% since 2017. Positive trends like this are only possible with your support. Please consider being a part of helping prevent pet overpopulation by supporting Friends of the

Animal Shelter. Please visit our website: www.friendsoftheanimalshelter.org or send your support to:

Friends of the Animal Shelter Hancock Co. (501c3) holds meetings every other month at 6:30 at the Main Street Methodist Church in Bay St. Louis. The meetings are the 3rd Thursday of the month and are open to anyone who is interested in helping support the Hancock Co.

Animal Shelter, facilitating spay/neuter programs, and improving the general welfare of animals in Hancock Co. If you love pets, come to a meeting and join us in our mission. The next meeting will be held on March 19th. <https://www.friendsoftheanimalshelter.org/index.html>

Friends of the Animal Shelter in Hancock County
PO Box 2274

Bay St. Louis, MS 39521

• CLUBS

DIAMONDHEAD GARDEN CLUB

► **BY GRETCHEN KLINEFELTER**

April is here, painting the landscape with fresh color as dormant roots turn to dazzling blooms. Coastal Mississippi is showcasing a floral encore of azaleas, now complemented by a beautiful display of bleeding hearts, irises, ranunculus and pansies. April is recognized as National Garden Month in the United States, a time to celebrate the tradition of gardening at home, in schools and communities. The Garden Clubs of Mississippi, Inc. (GCM) is a member of the Deep South Garden Clubs, Inc. (DSGC) or the Deep South Region. They are one of eight geographical regions of National Garden Clubs, Inc. (NGC) consisting of six member states: Mississippi,

Louisiana, Alabama, Georgia, Florida and Tennessee. The 2025-2027 theme is, "Plant the Deep South with Flowers and Trees, for the Birds and the Bees." Regional garden clubs in the United States are vital for promoting environmental stewardship, enhancing community beauty, and providing social connection. They foster local biodiversity by protecting habitats, educating the public on sustainable practices, and supporting conservation efforts, such as increasing native plant usage and supporting pollinators. The Deep South Region's work directly aligns with the National Garden Clubs, Inc. to educate, create and conserve, using hands-on experience and community engagement to make a lasting impact.

Diamondhead Garden Club will present an NGC



THE TAX Ladies

Find us on [facebook](#)

Due to the tremendous growth of our customer base, we are happy to announce that we will now have the preparation services of a Certified Public Accountant available on a part time basis.

We are open for income tax preparation from January 6th - April 18th, 2025 - Open Monday through Thursday for drop off appointments between 10am-2pm. (Other arrangements for evenings or weekends can be arranged). Our remaining hours will be spent preparing and arranging pick up for your returns.

We will now be offering bookkeeping services for individuals, families and small businesses. Call for more information. Rates determined by difficulty of services needed.

228-586-3352 | 4423 B LEISURE TIME DR. | DIAMONDHEAD, MS

• CLUBS

Standard Small Flower Show Thursday, April 9 from 2:00-4:00 p.m. at the Community Church. This year's theme is, "Our National Parks Awaken the Adventure." The flower show is free to the public. We hope you can join us.

The first flower show presented by Diamondhead Garden Club was in April 1975 and has continued annually ever since. In 2006, after Hurricane Katrina, the club wanted a way to show resilience, so they named the flower show, "Katrina Blows Ashore." This flower show took place at a club member's home since all public buildings sustained structural damage or were being used for recovery efforts.

Our current Flower Show Committee Chair is Mrs. Penny Crawford. Mrs. Crawford is a seasoned gardener and a natural teacher for her peers. She has been a member of Diamondhead Garden Club for over twenty-one years. Her list of credentials is impressive, including past Diamondhead Garden Club President, Master Flower Show Judge and Mississippi Gulf Coast Council of Garden Clubs. Mrs. Crawford shares, "educating the public, fostering community interest in gardening, and members' demonstrating horticultural and design skills are key reasons for an annual flower and plant show." Along with the responsibility of Flower Show Committee Chair, Mrs. Crawford holds the title of Horticulture Chair. Each month she promotes plant knowledge and cultivation along with design skills by educating members with

plant material she brings from her yard. She instructs on the diverse as well as common plant items. Mrs. Crawford states, "Anything that broadens the interest in our community strengthens us as a community."

Diamondhead Garden Club meets the third Wednesday of each month at Diamondhead Community Church in the Activities Room. We hope you will join us Wednesday, April 15 for our next meeting and program. We are looking forward to spending some time with our program host and Hancock County Extension agent via MSU, Mr. Tim Ray. Mr. Ray is joining us in honor of National Arbor Day, which is April 24. He is a wealth of knowledge and we look forward to gaining insight from him. Club social time begins at 9:30 a.m. with our meeting to follow at 10:00 a.m. All Diamondhead residents are welcome.

With April's arrival, it's time to get your hands in the dirt. Your April checklist includes dividing violets, Shasta daisies, liriopis, mums and



other perennials. You can plant okra, melons, peas, corn, beans, eggplant, cucumbers and tomatoes. Basil can be placed outside. Now is the time to set out those summer blooming annuals: alyssum, begonias, geraniums, dianthus, marigolds, petunias, impatiens and coleus. Summer and fall blooming bulbs can be put in the

ground: callas, cannas, dahlias, gladiolus and gloriosa lilies. To help ensure success, always mulch new plantings. Prune azaleas and other spring-flowering shrubs after blooming. Lightly shape any formal hedges to remove unwanted growth. April is also a good time to paint and repair any garden furniture or other hardscapes (birdbaths,

birdhouses, mailbox, etc.)

Don't forget to check out our 'Live Oak Tree' ad following this article.

April's quote:

The kiss of the sun for pardon. The song of the birds for mirth. One is nearer God's heart in a garden, than anywhere else on earth. Dorothy Frances Gurney



The Longo Group

Independent Financial Firm

UNDERSTANDING YOU, YOUR FAMILY, YOUR BUSINESS

BECAUSE WE LISTEN

The Longo Group is an independent wealth management firm, committed to helping successful families, individuals, and business owners solve their financial concerns.

Our personalized approach is founded on our client-service culture and the disciplined planning process used to build customized financial plans. We believe in personal relationships, proactive outreach, and in-person communication.

We organize, simplify, and manage your financial life.

ADVICE & GUIDANCE

- Goals based wealth management
- Tax minimization strategies
- Investment portfolio assessment
- Education funding strategies

ESTATE GUIDANCE SERVICES

- Private Family Foundations, Trusts, & Other Advanced Funds
- Insurance and annuities
- Charitable giving

PROGRESS TRACKING

- Client reviews
- Asset re-balancing and management

The value of an advisory relationship is found to have often you get to be heard.

You can count on us to reach out.

Senior Wealth Management Advisors

Tori Longo, CFP®, ChFC®, CLU®, President

Steve Longo, Vice-President

Chris Colton, CRPS®, CFP®, Vice-President – MC Adviser '09



Members of the Longo Group Advisory Board include: Steve Longo, Tori Longo, Chris Colton, and Steve Longo.

2014 Gauss Blvd. E. | Slidell, LA 70461

Phone/Fax: 985.441.1042

Fax: 504.279.1379

Toll Free: 833.475.6666

info@longogroup.com | www.longogroup.com

RETIREMENT

- Planning for retirement
- Managing 401(k) during job transitions
- Managing income in retirement
- Healthcare expense planning (Health Insurance, Social Security, & Medicare)

INVESTMENTS

- Equity, Bond, Income strategies & CDs
- Concentrated stock services
- Managed account programs
- Alternative investments (AI)
- Unit investment trusts (UIT)
- Market-linked investments

The Longo Group is a Registered Investment Advisor, Securities Broker/Dealer and Investment Advisor. Member of Longo Group, LLC. (Investment Advisor) (Member SIPC). Member FINRA, SIF. Advisory services provided through Longo Group, LLC, a SEC Registered Investment Advisor. The Longo Group website contains financial information. Member SIPC.



COLDWELL
BANKER
ALFONSO
REALTY, INC.

228-467-0244



JOHN HALL

ABR, GRI, e-PRO

Diamondhead Resident since 1995

Call **SELL** phone:
(228) 669-6111

Also licensed in Alabama for
Orange Beach & Gulf Shores

"CALL HALL"



6610 HALE CT

3 BD, 2BA, 1,930 SF | \$297,000



7514 AUGUSTA WAY

4 BD, 4 BA, 3,668 SF | \$674,900



84135 LOLA DR

3 BD, 2 BA, 1,754 SF, \$289,000



1324 ENOS ST

3 BD, 2.5 BA, 2,180 SF | \$725,000



7730 MANINI WAY

3 BD, 2 1/2 BA, 3,267 SF, \$389,000



87129 GOLF CLUB DR

3 BD, 2.5 BA, 3,080 SF, \$349,000

• CLUBS



One of the foremost projects of Diamondhead Garden Club is to record qualified Live Oaks Trees with Hancock County Historical Society. In December 2020, Diamondhead Mayor and the City Council signed a proclamation designating the City of Diamondhead as a Live Oak Tree City in Mississippi. Diamondhead Garden Club is looking for Live Oak Trees in our community that are 100 years in age or older. Not sure of your tree's age? A Garden Club volunteer would be happy to assist you in determining that information. If your tree meets the specifications, we can help you register your tree with Hancock County Historical Society and provide you with a certificate and a plaque for the tree that denotes the registered name you choose as well it's age.

Some historic Live Oaks fall just a bit short of these required measurements. We can still honor the significance of your tree. Your Live Oak would be 'recognized.' The owner of a recognized Live Oak

would receive a certificate and a tree plaque. This also provides that your tree is on track for certification.

Diamondhead is fortunate to have an abundance of Southern Live Oak trees. Please help us honor these majestic trees!

DIAMONDHEAD WINE CLUB FEBRUARY TASTING

Thursday, April 16th, 2026 - Wines from the southern Hemisphere-

7:00 at the Club

Once again, we'll sample wines produced "Down Under." There are many outstanding wines from South Africa, Australia, New

Zealand, Chile and Argentina, I recently had some amazing Malbec while in Buenos Aires over Christmas. We'll see what we can find.

Cost is \$45 for DWC members and \$55 for guests. Please make your reservations by mailing your check payable to DWC to: P.O. Box 6523 or by emailing Lou at louertel@aol.com or Marshall at mekygs@mail.com.

Thursday, May 21st, 2026 - Sparkling Wines - 7:00 at the Club

May always brings us to our Sparkling Wine night. We try to find a Champagne, a Prosecco, a Sparkling Wine and something different. This is always one our most enjoyable

evenings!

Cost is \$50 for DWC members and \$60 for guests. Please make your reservations by mailing your check payable to DWC to: P.O. Box 6523 or by emailing Lou at louertel@aol.com or Marshall at mekygs@mail.com.

Thursday, June 18th, 2026 - High End Wines - 7:00 at the Club

Since we didn't have our usual December High End Reds, we thought we'd close the Spring tasting series by celebrating with some

finer wines. In order to minimize cost, we will have our normal plate of nibbles and put the extra money into the wine. Yum.

Cost is \$60 for DWC members and \$75 for guests. Please make your reservations by mailing your check payable to DWC to: P.O. Box 6523 or by emailing Lou at louertel@aol.com or Marshall at mekygs@mail.com.

Wine Club will be off until September. If you would like to recommend a wine for us to

try or suggest a theme for an evening, please let us know. We're always open to suggestions.

DH HIKING CLUB NEWS FOR APRIL, 2026 BY SHEILA EDWARDS

Hi-Ho, Hi-Ho! A-hiking we will go! Don't be left out... pack your knapsack with a snack and water and join the DH Hiking Club at one (or all) of our April hikes, which are always followed by... LUNCH!

Saturday, April



**Diamondhead
Garden Club**
Presents
An NGC
**STANDARD
SMALL FLOWER
SHOW**
April 9, 2026
2:00 PM to 4:00 PM
The Community Church
5301 Diamondhead Circle
Diamondhead, MS 39525

"Our National Parks Awaken the Adventure"

Diamondhead Garden Club Community Projects:
DGC Annual Flower Show - Live Oak Registration
Assist Eagle Scout Projects - Maluhia Garden
Woodland Village Therapeutic Garden

A Member
SPANISH TRAIL DISTRICT
DEEP SOUTH GARDEN CLUBS, INC.
THE GARDEN CLUBS OF MISSISSIPPI, INC.
NATIONAL GARDEN CLUBS, INC.

An NGC FLOWER SHOW presented under the rules and regulations of the
Garden Clubs' Handbook for Flower Shows 2017 Edition and Changes

Open to the Public, No Admission, ADA Accessible

HEALTH INSURANCE MEDICARE SPECIALISTS

Lisa Ladner Agency, LLC

5402 Aloha Dr. Suite C | Diamondhead, MS 39525

**Advantage Plans • Medigap Plans
Dental & Vision • Affordable Care Act**



Lisa Ladner
228-424-6125



Brittney Ladner King
228-343-2422



REMAX COAST DELTA REALTY



228-255-2600 | www.coastdeltarealty.com | 5400 Indian Hill Blvd. • Diamondhead, MS 39525



13192 ANDY STREET-

Storage, huge shop and a meticulously cared for home... this one has everything and more. MLS #4123467



3855 FIRETOWER ROAD-

Located on 2.8 peaceful acres, this beautiful home offers the perfect blend of modern amenities and country charm. MLS #1712442



67963 DIAMONDHEAD DR. E.-

Welcome to this beautifully updated home featuring a private courtyard and thoughtfully designed indoor-outdoor living. MLS #4142114



84176 BAYOU DRIVE-

This charming home is perfectly positioned on an elevated lot and showcases attractive board-and-batten Hardie board siding for a coastal feel. MLS # 4145922



7748 MOANALUA WAY-

Perfectly positioned on a double lot along the Pine Golf Course—conveniently located between the 21 greens and 43 tee box. MLS #4124881



7729 MAHINI WAY-

This spacious home sits on two-contained lots in a desirable corner location, offering a rare combination of privacy, elevation, and corner views. MLS #4142049



8938 HANALEI CIRCLE-

Beautifully updated charmer that has been raised, elevated and built on a lot of 6.90 acres. Built in 1988. MLS # 4142014



7941 LANAI STREET-

Beautiful views of the golf course from every angle, especially from the glass sunroom with views down the whole green. MLS #1422142



HAPPY

Easter

FROM ALL OF US



• CLUBS



DH Walking Trail

4--Regularly-scheduled first of the month hike on Fountainebleau Trail, in Ocean Springs. This hike is sponsored by the Jackson County Recreation Department, Mississippi Sandhill Crane Wildlife Refuge, and the Audubon Society and is led by an expert naturalist. The hike starts in the woods and winds through the marsh before going back into the long-leaf pine forest. It will be followed by lunch somewhere in or near Ocean Springs. Meet at the front of DH Golf Club parking lot a bit before 8:00am. Leave at 8:00am. Hike starts in Ocean Springs at 9:00am. Leader from Diamondhead to Ocean Springs: Sheila Edwards

Thursday, April 9—We'll take advantage of one of our near-by hiking opportunities and wander around the flat/easy sidewalks in Jones Park in Gulfport. While there is no shade, the view of the Gulf is one of the attractions, along with the potential sea breeze. Meet at the front of the DH Golf Club parking lot at 9:30 to form car pool. After the hike we'll enjoy lunch at Salute, one of our favorite spots to nosh. Leader: Tobey Porter



Jones Park Pavilion

Wednesday, April 22—Still staying close to home, we'll try out the recently-developed and improved Noma Drive trail right here in Diamondhead. The mostly-shady 4-mile long trail starts near City Hall and winds around the City Hall area. We'll walk as much as we feel like before heading to the Red Zone for lunch. Meet by the Gazebo at City Hall to start the hike at 9:30. Leader: Sheila Edwards

Our next planning meeting will be Tuesday, April 7, 2026, at 6:00pm in the Kanaka room at the DH Country Club. Spring is really here and the hiking weather is PERFECT! We are so lucky to have a multitude of trails and hiking opportunities available here on the coast. Maybe you know of a little-known path we could explore? Come and share your "secret spot" with us <heh heh>

DIAMONDHEAD NEWCOMERS BY ALISON MCCRAW

Members and guests of the Diamondhead Newcomers Club were runway ready at the March luncheon, as Exit

16 Boutique hosted a fabulous fashion show. Club members stepped onto the catwalk and strutted their stuff in beautiful outfits from Exit 16. We would like to extend a special thank you to Alison from Exit 16 for coordinating the fabulous fashion show. Her hard work and attention to detail made it a wonderful addition to our monthly meeting. The April luncheon will be held on Wednesday April 8th, as we celebrate "April Showers Bring May Flowers." Wear your favorite outfit and join us! Lunch is \$25 and dues are \$20 for the year. RSVP to newcomersdiamondhead@gmail.com to secure your reservation.

Wednesday, May 13th will be the club's final



**Diamondhead
Newcomers**

**OLD TOWN
Cuz's Oyster Bar & Grill**

**YOUR LOCAL SEAFOOD
JOINT IN THE HEART OF
BAY ST. LOUIS!**





(228) 467-3707

108 S Beach Blvd. | Bay St Louis, MS 39520

CLUB NEWS *for* APRIL 2026

As we move into April, a lot is happening at The Club at Diamondhead. With spring underway, the golf season picking up, and several major tournaments on the calendar, we are preparing for a full month of special events, live entertainment, and weekly dining features for members and guests to enjoy.

April begins with one of our favorite traditions, Steak Night on April 4, followed by our Easter Buffet on April 5, which is always a great opportunity for families and friends to gather at the Club. As the excitement builds around The Masters Tournament, we will feature themed specials beginning Wednesday, April 8, with our Wednesday Before the Masters Golf Outing, and continuing through Masters weekend, April 10–12. That same weekend will also bring Big Kahuna Weekend, creating a lively and fun atmosphere throughout the Club.

Later in the month, we will celebrate another major event in professional golf with food and drink specials during the Zurich Classic of New Orleans, April 24–27. Our kitchen will be featuring a Louisiana-inspired plate including Gumbo Ya Ya, Chicken and Sausage Jambalaya, and a Grilled Andouille Sausage.

In addition to these special events, you can continue to enjoy the weekly favorites that have become staples at the Club, from Sips and Giggles on Tuesdays and Trivia Nights to live music every weekend and our Sunday Game Night. Our entertainment lineup continues to grow as well, with bands performing every Friday evening and additional live music during Steak Night Saturdays.

We are also pleased to recognize Tiffany Johnson as our Employee of the Month for April. Tiffany's dedication and hard work help create the welcoming experience our guests expect. She never turns down a challenge and always approaches the job with a positive attitude, and we truly appreciate everything she contributes to the team.

We look forward to seeing everyone around the Club throughout the month and hope you will join us for the many events, specials, and entertainment planned for April.

April 25

Bourbon & Cigar Night

Sip Rare Bourbon. Enjoy a Premium Cigar.
Relax with Friends.

Enjoy a custom selection of rare bourbons and premium cigars.

Includes:

- 2 Bourbon Tickets
- 1 Cigar Ticket
- Light Appetizers

Additional pours and cigars available for purchase
Full Menu & Cash Bar Available

\$45 per person*
*Plus tax & gratuity

Cigars provided by Natal's Tobacco Hut & Fine Cigars
*POA Member Discount Available



2026
The Masters Specials

April 10 - 12
11:00 am - 4:00 pm

Appetizers:
Deviled Egg Plate - \$10
Egg Salad with Crackers - \$10

Entrees:
Egg Salad Sandwich with
Choice of Side - \$11
Pimento Cheese Smash Burger
with Choice of Side - \$17

Drinks:
John Daly - \$6
Azalea - \$6
Peach & Par - \$9

Photo by CHAU Tran Vinh



FRIDAY NIGHT LIVE MUSIC

- April 3 - Razzoo
- April 10 - Tease Me Band
- April 17 - Quarter Notes
- April 24 - Back to the 90's Country Night with DJR and the Soul Shine Band

7:00 - 10:00

LATITUDE 30
patio and grill

The Club at Diamondhead
228-255-2918
www.theclubatdiamondhead.com
@clubatdiamondhead



ZURICH CLASSIC SPECIALS

APRIL 24 - 27

GUMBO YA YA, CHICKEN AND SAUSAGE
JAMBALAYA, AND GRILLED ANDOUILLE
LINK PLATE \$18

11am - Close

LATITUDE 30
patio and grill



Bingo Night Shannon Style!

April 21 | Starts at 6:00 PM

Join us for a night of fun, laughs, and prizes!

One free card per person. One additional card per purchase (3 max).
No cash entry. No cash prizes

LATITUDE 30



• CLUBS

meeting of the year. We will have a Fiesta and say ADIOS until next year. Whether you are new to Diamondhead or have lived here forever, we hope you will join us for some friendship, fun and a delicious lunch at The Club at Diamondhead. Call Marilyn Lott for more information 601-528-3336.

► P.E.O. CHAPTER T

► BY DINAH KNOBLOCH

MAH JONGG

► BY SANDY PRICE



P.E.O. Chapter T is pleased to welcome our newest sister, Angie Courville. Angie was recently initiated into our sisterhood and joins us in our mission to support women's education through the Philanthropic Educational Organization Projects. These projects provide essential grants, scholarships, awards, and loans, while also supporting Cottey College. Pictured are Angie and the Chapter T officers.

Hi y'all! We would love to have you join us in learning how to play mah jongg with us on each Tuesday afternoon as we play in a reserved card room from 1:30 PM until 4:00 PM. It's a fun time; we're not that competitive. Come watch us, learn the game and join our group. Thank you,
Sandy Price 228-255-5457 or 228-342-5217

DIAMONDHEAD DEMOCRATS, PROGRESSIVES, INDEPENDENTS ALLIANCE

The April meeting of the Diamondhead Democrats, Progressives, Independents Alliance (DDPIA) will be on Thursday, April 16th at St. Thomas

Episcopal Church, 5303 Diamondhead Circle. (DDPIA is not affiliated with St. Thomas.) Registration and social time begin at 10:00am followed by a guest speaker at 10:30. The business meeting follows the guest speaker. Past speakers include the Hancock County Library Director, the Hancock County Schools Superintendent, mayoral candidates, the director of the Boys and Girls Club of Bay St, Louis, representatives from the Gulf Coast Mutual Aid Collective, the executive director of the Biloxi Free Clinic, the POA president, and various political candidates. Come join us for an informative time, as well as mingling with a fun and interesting group of people.

THURSDAY MORNING LINE DANCERS

► BY MOLLEY KOONEY

Lessons and dancing, led by Molly, will be held from 10:00 - 11:00 am on THURSDAYS at the DIAMONDHEAD METHODIST CHURCH, 5305 Noma Drive. Across the street from City Hall. Please wear comfortable soft soled shoes.

Great exercise, great fun, \$1 room rental per person.

FOR DETAILS OR CANCELLATIONS see our web site:

<https://sites.google.com/site/getmoving12345678/>

PARTY BRIDGE CLUB

► BY ELISE BREEN

The date for our next monthly gathering to play Party Bridge will be Friday, April 24, in the Kanaka Room at the Diamondhead Country Club. Our arrival time is 9:15 and we will begin playing at 9:30. If you have any questions regarding the Party Bridge Club, please contact Barbara Gibbons at (228) 760-1112 or Elise Breen at (228) 342-1529. The winners in February were Liz Leonard in First Place, Conchetta Donnelly in Second Place, and Jerrie Guidroz in Third Place. Our Special Prize went to Linda Naron.



EDMOND-FAHEY
FUNERAL HOME

SINCE 1895

- SINCE 1895, -
**THE ANCHOR
HOLDS STRONG**

HERE TO SERVE WHEN YOU NEED US MOST
EDMOND FAHEY FUNERAL HOME
pride to be locally owned and operated

The staff at Edmond Fahey Funeral Home take great pride in caring for our families, and have made a commitment to provide you with a beautiful, lasting tribute to your loved one. Everyone's needs are different, and honoring your loved one is our top priority. For that reason, we have a wide range of resources to support you not only today, but in the weeks and months to come.

In addition to offering services ranging from Simple Cremation to Traditional Burial, some resources and specialty services we offer include: Cemetery and Mausoleum Property, Live-Streamed Services, Memorial Slideshow Videos, Online Obituary Tributes (including photos and obituary), Obituary Bookmarks, Grief Support, and More. We invite you to visit the funeral home, or visit the QR Code below, for a free copy of our Funeral Guide book to learn more or to help with preplanning.



☎ **228.467.9031**

110 S. Necaise | P.O. Box 3030 | Bay St. Louis, MS | www.bslef.com

• CLUBS

DIAMONDHEAD WOMEN'S CLUB

BY ROBIN B. GAINES

Our March 4th "Welcome Spring" meeting was a special one. Rachel Bobd from Pine Hills Nursery gave a very informative and entertaining flower arranging demonstration.

April 5th Glitz plans are in full swing. Prize will be awarded for best group costume with a Glitz/Pink Hearts theme. This is one event you do not want to miss!!

April 1st is the deadline for Glitz donations. PLEASE NOTE: No donations will be accepted for this year's event after this deadline.

We strive, through diligence, hard work, creativity and friendship, to continue our efforts to 'Support and Celebrate Women'.

The theme for our DHWC is Supporting & Celebrating Women. The objective of this club shall be to promote an informed and active interest in the civic, social and moral

welfare of the community: to serve the community through the dedication of time and energy for worthy purposes; and to undertake and complete one or more charitable, humanitarian or social welfare projects each year.

Our meetings (we do not meet in June, July, or August), are held the first Wednesday of each month from September to May, beginning at 11:00 a.m. at the Diamondhead Country Club, Emerald Ballroom.

Membership is \$20.00 and is open to all women.

Dates and times for upcoming meeting, events and fundraisers to be announced in upcoming issues of this publication and you can follow us on Facebook.

For more information about the Diamondhead Women's Club or any of our events, please contact the DHWC President, Rachel Huskins @ (504) 400-3013.

• DH MARDI GRAS

Krewe of Diamondhead Gives out a huge Thank You!



PHOTO PROVIDED BY TOM AND SARAH PHOTOGRAPHY

Ali'i Ho Nua, Harold Manning and Queen Teresa Manning

The Krewe of Diamondhead recently hosted its annual Mardi Gras parade, an event made possible through the collective efforts of numerous individuals and organizations, including our new Parade Director, Carmen Waring.

Firstly, the Krewe would like to extend its gratitude to the City of Diamondhead for sponsoring our parade. The Parade Director and city officials engaged in numerous meetings and devoted consider-

able time to ensure a fun and safe experience for all attendees. Their dedication was instrumental in the parade's success.

The Krewe also wishes to thank Mayor Anna Liese for presenting the key to the City of Diamondhead to Ali'i Ho Nua, Harold Manning, during the parade's after-party. Additionally, we appreciate the efforts of the City of Diamondhead's maintenance department in setting up and cleaning up the parade route.



PHOTO PROVIDED BY TOM AND SARAH PHOTOGRAPHY

The City of Diamondhead Mayor and Parade Marshal, Anna Liese and her son.

Their hard work did not go unnoticed, and their contributions were invaluable.

We would like to thank the City of Waveland for providing the viewing stand, which they have generously shared with the Krewe for several years. Their kindness is greatly appreciated.

The Krewe would like to extend a special thank you to the Bad Mom's Dance Krewe and The Salty Sirens for participating in the parade and providing

exceptional entertainment.

For the parade's after-party, we would like to thank the Club House staff for providing the ballroom, food, and beverages. Their outstanding service ensured a memorable experience for all attendees. We also appreciate the hosts from the mask ball for providing decorations.

The music and entertainment were provided by Tease Me Band, who delivered an exceptional performance. Thank



PHOTO PROVIDED BY TOM AND SARAH PHOTOGRAPHY

Ali'i Ho Nua Harold Manning and Diamondhead Mayor, Anna Liese

you for your contribution to the event's success.

A special thank you goes out to our outstanding Parade Marshal, Mayor Anna Liese, who led the parade alongside her husband, Chris Liese, and son.

We would also like to thank all parade participants, including the royalty of other Diamondhead Krewes. Your creativity and en-

thusiasm were essential to the parade's success.

Lastly, the Krewe of Diamondhead would like to thank everyone who attended and supported this family-friendly parade. We strive to improve each year, and your participation is invaluable. Next year's Mardi Gras Parade will take place on February 6, 2027.

For information on joining the Krewe of Diamondhead, please visit our public Facebook page or contact our Membership Director, Dana Wair, at sedonadana@gmail.com. June 2026 marks our 52nd Mardi Gras season.

We look forward to seeing you again next season!

**STAY IN
the KNOW**





Kim Carlson, REALTOR®
 C: 985.249.1669
 O: 228.287.1000
 kimcarlsonrealtor@gmail.com

CB COLDWELL BANKER

Office: 228-287-1000
 9153 Lorraine Rd. Gulfport, MS



87001 Beaux Vue Court
 Diamondhead

3 Bed | 2 Bath | 0.24 Acres | 1955 sqft | \$333,900

Fabulous, new construction with high quality new build featuring real hard wood floors, high end light fixtures, tall ceilings and hard to find side garage on spacious high and dry flood zone X lot near the golf course in Beaux Vue. White shaker kitchen with 40" glass door upper cabinets, Quartz counters, and nearly impossible to find Gas cooking, Bosch dishwasher and Beko refrigerator. Tankless water heater. Five piece primary bath with showstopper free-standing tub and chandelier!



ALFONSO REALTY, INC.

Barbara Gay, REALTOR®
 228-861-7564 Direct
 BarbaraGayRealtor@gmail.com
 BarbaraGaySells.com



Cozy cottage feel without giving up space or modern comforts. Beautifully landscaped lot with majestic live oaks, circular drive & undeniable curb appeal. Inside features: open floor plan, 3 generously sized bedrooms, 2 full bathrooms, including a private primary suite with walk-in shower designed for comfort & relaxation. Downstairs, a massive basement provides endless possibilities-create additional living space, home gym, media room, or more. With option to add heating & cooling, it's ready to be transformed to suit your needs.



6658 Ahecolo Circle Diamondhead
 3 Bed | 2 Bath
 0.29 Acres | 1824 sqft | \$263,500



**Make a
 Splash
 this
 summer!**

**JOIN THE
 POOL MEMBERSHIP!**

**CALL
 228-255-2929**

FUN, SUNSHINE, & POOL DAYS ARE WAITING!

• SPORTS

A MESSAGE FROM CHRIS ALTESE, DIRECTOR OF GOLF

The azaleas are blooming and we all know what that means...Spring has sprung here in Diamondhead! Despite a recent cool down, our golf courses are greening up. We are lucky to call Diamondhead home.

With warmer temperatures here, please expect the golf courses to have more play from members and guests. Also, as property owners and annual golf members you are able to make your golf reservations online up to 30 days in advance. Be sure to make your golf reservations at...www.TheClubatDiamondhead.com.

The Jack O'Neill Junior Championship was contested February 28-March 1 on the Pine. As we have

seen before, these junior golfers are all so well mannered and talented. It was a joy to host this event honoring Jack O'Neill and promoting his love for junior golf. Congratulations to all of the players and especially our champions... Boys Overall - Will Cooley, Boys 16-18 - Will Cooley, Boys 14-15 - Nolan Osborne, Boys 12-13 - Alec Dier, Girls Overall - Addison Hammett, Girls 16-18 - Mackenzie Smith, and Girls 14-15 - Addison Hammett.

Spring is time for The Masters! With that be sure to check out our Wednesday Before The Masters Golf Classic. This event is something new that we believe all will enjoy. Three ways to win...individual gross score, individual gross score on our 9 par 3 holes set up exclusively for this event, and individual gross score added to your

pro's score (pick a pro for the Masters final round.) We are even doing a Masters themed lunch prior to play. Don't miss this!

Spring is also time for the Big Kahuna Golf Challenge! The Club at Diamondhead is excited about our upcoming Big Kahuna Golf Challenge. This is a "must play" event. Great golf, great food, and great parties. Both Friday night and Saturday are going to be amazing fun. As of this writing, the field is almost full. Registrations are coming in fast. A little history, Don Smith was instrumental in starting the Big Kahuna Golf Challenge over 20 years ago. On Friday, the dinner will feature live entertainment in the ball room for participants and then all will roll into Latitude 30 to enjoy the band performing the remainder of the eve-

ning. The Marine Corps League will be charity again this year. The Marine Corps League is helping many of our veterans through funds raised through this event. Even if you are not playing, stop by The Club over the weekend to check out the incredible auction items and other fundraisers. We expect a tremendous turnout!

The Ladies' and Men's Malahini Member-Guest events are almost here. Be sure you understand the eligibility requirements for club net events...You must have a current WHS/GHIN handicap index and a minimum of six (6) 18-hole scores, or equivalent, posted within 90 days of the event start date at the time of turning in your registration form and payment. As part of the efforts to maintain and properly utilize the World Handicap System/GHIN at

APARTMENT FOR RENT

5402 GEX DRIVE, DIAMONDHEAD, MS

39525 - APT. A



2 BEDROOM, 1 BATH
1,240 SQ FT
ALL UTILITIES INCLUDED
\$1,500 A MONTH ALL-INCLUSIVE
CALL OR EMAIL FOR MORE INFO
JHOSKINS@TDLCRE.COM
(228)-832-8302

• SPORTS

The Club at Diamondhead for our members, we have implemented this eligibility requirement in club events based on net scores or pre-flighted based on handicap/handicap index.

Our 29th annual Sweetheart Scramble was held on Sunday, February 16th, and as usual we had a really fun event. Congratulations to our winners...

Championship Flight –

1st place...Paige Spears/Dwain Strickland
First Flight –

1st place...Jan Hursey/Barry Lacy & Diane Jones/Kevin West & Lisa Scott/Earl Scott & Elaine Ledet/Mike Ledet

Second Flight –

1st place...Trish Mathias/Rick Goldstein

Third Flight –

1st place...Marilyn Galus/Don Thibodeaux

Did you know that we can fit you for almost any brand of golf clubs right here at The Club at Diamondhead? This is part of the services that are available to all of our golfers. Say you don't golf...you don't have to miss out on all of the fun. The Golf Academy at Diamondhead can get you enjoying the game of golf in no time. Golf instruction is available for all levels of play and especially beginners. Stop by and give it a swing! We guarantee that you will be glad you did.

Cart path only days, as much as we all dislike them, are required from time to time to protect our golf courses from damage. When cart path only, all golf carts, including those with handicaps, must remain on the cart path the entire time. Players should use extreme caution when passing another golf cart so not to damage the golf course when doing so. If you must pass, wait for a high and dry opportunity as well as being sure to pass toward the outside edge of the golf course (not on the tee, fairway, or green side). Also, when we are able to operate as 90-degree cart rule we ask for all golf carts to remain a

minimum of 30 yards away from the edge of the green and always return to the cart path side of the green. We appreciate your cooperation.

Upcoming Events...

- 4/3
- XXIO Fitting Day
- 4/6
- LHSAA Louisiana High School Invitational
- 4/10-4/12
- Big Kahuna Golf Challenge
- 4/18-4/19
- Gulf Coast Slavic Chase
- 4/22
- TaylorMade Fitting Experience
- 4/22-4/23
- Ladies' Malahini Member-Guest
- 4/24
- PRCC Alumni Golf Event
- 4/25
- Hancock Football Booster Golf Event
- 4/26
- Most Holy Trinity Golf Event
- 4/27-4/28
- Maintenance – Fertilizer Truck
- 4/29
- Gulf Coast Seabee Golf Invitational
- 4/29
- Mizuno Fitting Day
- 5/1
- FBC Fundraiser Event
- 5/2
- Jackson State Alumni Golf Classic
- 5/3
- US Kids Gulf Coast Local Tour
- 5/15-5/17
- Malahini Member-Guest
- 5/21
- Diamonds in the Rough Ladies Invitational

Other Important Dates...

- 6/5-6/7
- Hawaiian Mixed Couples Invitational
- 7/4-7/5
- Magnolia Classic
- 9/11-9/13
- Member-Member
- 10/2-10/4
- Diamondhead CP Four Ball

- 10/10
- Wheel of Misfortune
- 10/17
- Fall Festival Scramble
- 10/24-10/25
- The Shaka Club Championship
- 11/28
- The Gobbler

Golfers...are you doing your part? It's your course too so let's all do our part. Fill your divot and then two more. Repair your ball mark and

then two more. They don't even have to be yours! We look forward to seeing you "PLAY MORE GOLF." Let's all get out and enjoy our beautiful golf courses and practice facilities. As always, let us know how we can help.

DWGAN

► BY BRIGITTE BECKER

Spring may have sprung early for the DWGAN with playable weather

BUCK RAMOND
HEATING AND AIR

• 10 YEAR PARTS & LABOR | FREON INCLUDED
• FINANCING AVAILABLE
• NEW CONSTRUCTION, CHANGE OUTS & SERVICE AGREEMENTS AVAILABLE.

228.467.1212

Rheem
American Standard

2109 NICHOLSON AVE. WAVELAND, MS

• SPORTS

for our February and March games. On February 17 a sea of purple, gold and green could be witnessed on Mardi Gras as 29 DWGAN members arrived to play our special game on the Pine course. In celebration of the day, the women were divided into 10 teams, each player representing either a Jester, Mask or Beads depending on their status of A, B or C player. Two net scores were taken on each hole...the twist being that you did not know if your score counted until you arrived at the next hole where a placard was placed at the tee box with a picture of two of the three characters. There was a tie for first place, with each team netting a 71, but the scorecard playoff determined the winning team of Shannon Church, Cathy Gesell and Pauline Singer. Second place team included Margie Pittman, Kathy Jones and Jan Brignac. Betsy Lyons, Kathy Pierson and Lisa Pretzell scored a 73 confirming them as 3rd place winners, while 4th place was taken by Toni Rossol, Margaret Sherwood and Elizabeth Messer with a score of 76. Shoutout to Cathy Gesell for her Birdie on #6.

Colder weather and straight team times, which means a limited number of time slots, brought out a lesser number of players (16) for a Scramble on February 24 on the front of the Cardinal. First place honors with a score of 38 went to Therese Mauterer, Pattie Blackwood and Jan Brignac. The 2nd Place team scored a 40 and was comprised of Toni Rossol, Nancy Barker and Elizabeth Messer and the 3rd Place team included Shannon Church and Dawn Cason shooting a 42. Shoutout to Judy Sonntag for her Birdie on #4.

On March 3 we held our Founders Day Tournament. The DWGAN is 46 years old, being founded in January of 1980. We celebrated this day with 37 members, believed to be the largest group in the tournament's his-



DWGAN participants in the Founders Day Tournament

tory, divided into 3 Flights playing on the back of the Pine (ugh). The winners in each Flight achieve the honor of having their name inscribed on a plaque that can be located in the trophy case in Latitude 30. The winner of the 1st Flight was Kathy Jones with a net score of 32. Kathy won a scorecard playoff against Judy Sonntag, who placed second. Third place went to Susie Fontenot with a net score of 33 and Therese Mauterer placed 4th with a 35. The 2nd Flight winner was Margaret Sherwood, who scored a net 30; Beryl Laird and Nancy Sislow both scored a 31, with Beryl winning the scorecard playoff placing Nancy in 3rd and MaryAnn Stromeyer placed 4th with a score of 33. In Flight 3, Lisa Pretzello won 1st place netting 30, Dinah Knobloch and Dawn Cason tied with a score of 34, but Dinah won the playoff placing her 2nd and Dawn 3rd. Pat Vander-vort achieved 4th place with a score of 38. Closest to the Pin on #13 in order of 1st-3rd Flight include Susie Fontenot, Margaret Sherwood and Lisa Pretzello. Low Putts, again in order of flights included Toni Rossol (14), Beryl Laird ((15) and Pattie Blackwood (18). Birdies were achieved by Susan Fontenot and Nancy Sislow, both on Hole #13 and Betsy Lyons got a Birdie on #14. Beryl Laird managed a chip in on #17, believed to be why she was able to win low putts.

A Net Trophy Day was played on March 10 with 24 ladies willing to compete on the front of the Pine for those Pro Shop Dollars. First Place in the 1st Flight was Cheryl Saak,

netting a 33, Kathy Jones and Judy Tauzin tied for second with a net score of 35, but Kathy Jones won the scorecard playoff placing Judy in 3rd place. Second Flight winner was Brigitte Becker netting a 37. Beryl Laird and Janice Murray tied for second with a net score of 38, but Beryl won the scorecard playoff, placing her in 2nd and Janice in 3rd place. Flight Three 1st place winner was

Monica Jordan, who also tied with Mary Murray each netting a 34, but Monica won the playoff. Mary took 2nd Place and Lisa Pretzello netted a 38 and 3rd Place. The Closest to the Pin winners on #6 were awarded cash prizes, each taking home \$7. In order of Flights, 1-3, included Judy Tauzin, Brigitte Becker and Dawn Cason. Low Putt winners in order of Flights Toni Rossol (14), Janice Murray and Nancy Sislow tied in the 2nd Flight both having 15 putts and splitting the \$7; and Mary Murray winning 3rd Flight with an impressive 12 putts.

And ladies (and guys reading this article) remember what Bobby Jones said, "you swing your best when you have the fewest things to think about". Ciao, until next month.



MOST HOLY TRINITY (MHT)

Golf Cart Raffle

2025 Tara Spirit Plus Golf Cart




Featuring:

- Lithium-Ion Battery w/ 8-year warranty
- Radio w/auxiliary & lights,
- Sand Sottle, Ball Washer, Ice Chest,
- Ball Bag Cover, Foldable Windshield, Custom 12" Wheels w/Rubber Tires,
- All Climate Luxury Seats, Rearview Mirror,
- USB Charging Ports, Built-in Refrigerator,
- Comfort Grip Steering Wheel,
- 9" Bluetooth screen, LED Headlights, Charger

Winner need not be present at drawing
Only 200 tickets to be sold @ \$100

If less than 200 tickets are sold, proceeds will be divided between MHT and the winner. Drawing after MHT Spring Golf Tournament on 4/26/2026 @ The Club at Diamondhead

For tickets, contact Ed Sutherland
(252) 266-8408
esutlaw@aol.com

or Scan the QR Code to enter and pay with credit card



• SPORTS

DIAMONDHEAD MEN'S GOLF ASSOCIATION

(DMGA)

► BY JAN VEST

February 2026 Results Story

February at The Cardinal Course proved once again that golf is a sport where skill, luck, and selective memory all play equal roles. The DMGA faithful showed up in good numbers through the month, chasing birdies, dodging bunkers, and occasionally blaming the greens, the wind, or their playing partners.

February 4 – Low Scores and Close Calls

The month started with an ABCD team event where the magic number was 194. Four players tied for the top spot with that number: Michael Galvin, Neal Ricker, Alan Cason, and Dennis Tauzin. Each walked away with \$15 and the satisfaction of telling their partners they 'carried the team.'

Close behind at 195 were Billy Stroud, Kevin West, Tom Woolbright, and Arthur Burgoyne. Everyone else finished at 199 and began immediately recalculating their handicaps.

Closest-to-the-Pin honors included Neal Ricker, who decided one wasn't enough and won TWO CTPs (#4 at 7'3" and #17 at 18'3"). Billy Stroud stuck it to 5'8" on #7, while Todd Cobena found the dance floor on #13 at 10 feet.

February 18 – The 'Mixed Bag' Tournament

The February 18 event lived up to its name: a Mixed Bag. Dave Wright and Brian Brown led the scoring at -13, proving once again that when your putter behaves, life is good.

Tommy Murphy and David Barbato finished at -11, while George Thibodeaux posted -10 and quietly walked to the payout table.

CTP honors featured a laser show: George Thibodeaux (#4) at 1'9", Billy Stroud (#7) at 8'6", Brian Brignac

(#13) at 3'9", and Darren Rapert (#17) at 10'8". Several witnesses confirmed that at least two of these shots were actually intended to land that close.

February 25 – Late Month Surge

The final event of the month saw Tom Woolbright's team leading with a strong showing. John Bunce's group posted a tournament low of -25, with Randy Duke's team close behind at -19.

Individual payouts went to Tom Woolbright, Alan Cason, Dennis Laumann, and John McLaughlin at the top tier. The next tier included Val Miller, Dennis Tauzin, and Bill Merna.

Closest-to-the-Pin winners were Mike Zeringue (#2) at 8'8", Kevin Huskins (#6) with a shot just 10 inches away, Steve Garcia (#13) at 3'10", and Tommy Murphy on #15 at 2'10".

CTP Season Leaders Through February

Through February 25, the early CTP leaderboard shows Art Burgoyne leading with \$42 from two wins. Dave Wright (\$40) and George Thibodeaux (\$36) are right behind. Billy Stroud and Neal Ricker have also been frequent visitors to the CTP circle.

As for the rest of the field, many players—including several respectable golfers—remain stuck at \$0 in the standings. As one member noted: 'I'm consistently close... just never the closest.'

Final Thoughts

February proved again that the DMGA is not just about golf—it's about camaraderie, friendly competition, and the weekly hope that THIS will be the round where everything comes together. Sometimes it does. More often it doesn't. But either way, there is always next Wednesday.

Good luck to everyone in March. May your drives be long, your putts be straight, and your excuses be ready.

DWGA

► BY COLLEEN JONES

The weather has gotten better so we were able to play three weeks in February. February 12th we played Blind Draw on the Cardinal Course. First Flight had a three way tie for first place. The tie was between Liz Bell, Liz Austin and Tiffany Webb. Second Flight winner was Pat Ellis and second place was Colleen Jones. Third Flight winner was Judy Tauzin and second place was Joanne Fried. Closest to the pin winners were Liz Bell on hole #4, #7 & #17 Colleen Jones was able to beat her on hole #13. Liz Bell had a birdie and Carol Kirschenbaum had a chip-in.

February 19th we played Modified Stableford Points on the Pine Course. First Flight winner was Mary Lou Czaplicki, second place was Colleen Jones and third place was Jeanne Hudgins. Second Flight winner was



Blind Draw winners - Liz Bell, Tiffany Webb, Liz Austin, Colleen Jones, Joanne Fried, Judy Tauzin

Judy Tauzin, second place was Joanne Fried and third place was Terrie Garrett. Closest to the pin winners were Liz Bell on hole #2 and #6, Anne Payne on hole #13 and Terrie Garrett on hole #15. Liz Bell had a birdie and Mary Lou Czaplicki had a chip-in.



MITCHELL (Mike)
Monsour, Jr.
ATTORNEY AT LAW

- WILLS
- LOUISIANA SUCCESSIONS
- PROPERTY RIGHTS

- POWER OF ATTORNEYS
- MISSISSIPPI ESTATES
- HOMEOWNERS ASSOCIATION

Call 601-672-4188 • Licensed in MS, LA & NC

mitchell.monsour@gmail.com

• SPORTS



Stableford Points winners - Jeanne Hudgins, Colleen Jones, Mary Lou Czaplicki, Judy Tauzin, Joanne Fried, Terrie Garrett

February 26th we played Odd holes on front, Even hole on back on the Cardinal Course. The First Flight had a




Odd/Even winners - Bet Bowen, Margie James, Judy Sonntag, Brigitte Becker

tie for first place between Margie James and Bet Bowen. Second Flight winner was Judith Sonntag and second place was Mary Lou Czaplicki. Third Flight had a tie for first place between Denise Bergeron and Brigitte Becker. Closest to the

pin winners were Liz Bell on hole #4 and #7, Denise Bergeron on hole #13 and Cassandra Godbold on hole #17. Birdies were had by Bet

Bowen, Liz Bell, Terri Woolbright and Cassandra Godbold. Chip-Ins were had by Marta Wald, Bet Bowen and Brigitte Becker.





- HAND-FIRED GLASS BEADS
- GLASS BEAD JEWELRY

from the Lampwork
Bead Studio of
Leah Holmes
- DIAMONDHEAD -

www.theprofsbeadlibrary.com

AN EXCITING CHRISTIAN MINISTRY
WITH CONTEMPORARY WORSHIP!

Jacob's Well

Sunday Worship at 8:45 & 11 am, Live on YouTube at 11
Bible Study (all ages) 10 am
Wednesday 6:30-7:30 pm
Adult, Youth, and Children's Studies and Programs

A PLACE TO GROW YOUR SPIRITUAL LIFE THROUGH WORSHIP,
MISSION OPPORTUNITIES, ACTIVE CHILDREN AND YOUTH GROUPS,
AND HIGH-QUALITY ADULT BIBLE STUDIES

LOCATION: 29554 VIC FAYE RD., 228-255-2555
JUST EAST AND ACROSS FROM THE BROOKLYN CENTER AND
PRESTIGE FITNESS CENTER AT THE BACK OF DIAMONDHEAD

DR. BILL WARREN, PASTOR

A MULTI-GENERATIONAL, FAMILY-FOCUSED,
MINISTRY-ORIENTED, SOUTHERN BAPTIST CHURCH
SERVING HANCOCK AND HARRISON COUNTIES

Free Admission!



220 Main St.,
Bay St. Louis

FOLK ART MUSEUM

BAY ST. LOUIS, MS

Now Open inside Gallery 220!!!

Open 11-5, Mon.-Sat., 12-4 on Sunday
www.alicemoseley.com

Diamondhead News

PRSR STD
U.S. POSTAGE
PAID
BATON ROUGE, LA
PERMIT NO. 88

7610 Country Club Cir., Diamondhead, MS 39525



BUSINESS BROWSER

INSURANCE, HOME CARE, MUSIC
LESSONS, SHOPPING, LAWN & GARDEN
BUSINESSES ARE FOUND BELOW

TO ADVERTISE IN THE DIAMONDHEAD
NEWS OR FOR MORE INFORMATION,
PLEASE CALL US TODAY AT 228-467-5474.

IRON MAGNOLIA ANTIQUES

— Visit once & you will be back —



- One-Of-A-Kind Gems & Antiques. You'll be pleasantly shocked.
- Explore 9 Large Rooms full of Vintage Antiques, Pottery, Stained Glass & Elegant Glassware.
- Walk our Lawn & Garden areas for Fountains, Urns, Pots and Concrete Garden Features to set up your Garden.

228.918.6468 | Open Fri., Sat. & Sun. from 12pm to 5pm
6030 Menge Avenue, Pass Christian, MS 39571

**Your Ad Could
Go Here!
Call Us Today at
228-467-5474!**



LOWEST INSURANCE
RATES ON THE COAST FOR
HOME, AUTO, BOATS, TOYS,
AND ALL BUSINESS RISKS

CALL OR TEXT US

(228) 466-4498

Angelyn Troutel Zeelingue
info@southgroupgulfcoast.com



**YOUR AD COULD
GO HERE!**

**Call Us Today at
228-467-5474!**




Now is the Time to Plant
Fruit • Flowering • Shade Trees
Your Full-Service Garden Center

HOURS:
Mon-Sat
8:30-5:00

www.pinehillsnursery.net
228-255-9645

7434 Cuevas Rd
Pass Christian

