

Diamondhead News

MAY 2026

www.diamondheadms.org

VOL. 44, NO. 5

FROM THE DESK OF THE PRESIDENT

► BY **NANCY SISLOW**
BOARD PRESIDENT

Throughout April the Board held weekly meetings (which started in March) to continue the work on a plan to manage the amenities for the future with a goal to hopefully reduce or eliminate dues.

A resolution developed March 23 to start the process of moving forward was amended at a meeting on April 6th and sent out as an E-blast on April 8th. The amended Resolution expanded the options we envision to reach our goal. The amended Resolution listed four options for management of the amenities; 1. Continue ownership and operation of some or all of the amenities by the DHPOA, 2. Market and sell all the amenities to a single purchaser, 3. Market and separately sell some or all of the amenities to multiple purchasers, and 4. Donate the amenities to the City of Diamondhead. The resolution states that the Board is committed to eliminating options it will not pursue and has authorized the General Manager to seek leisure investor advisors to tour the properties and inform of any brokerages services it could provide including information regarding the potential sales options. The Board will use this information to continue its decision-making

regarding the options named in the resolution.

We have received bids for purchase of The Camphouse and Marina and the RV storage area. Those interested parties were put on notice that we have a process in place that we must follow and that we will respond as soon as we have the information we seek. The offer for purchase of Tennis by the person currently leasing is also on hold as we seek the information available from the leisure investor brokers. Deciding if sales of properties as a whole or in parcels is challenging when we have financial woes as well. However, we are committed to a logical process that should result in the best structure for the future.

We have also provided our plans and ideas to the City Council who has the same interests in mind – the continued recreational emphasis in Diamondhead. They have been able to consider

the possibility of accepting more amenities should the implementation of that option be required. No formal action has been taken by either party, but the Board decided that open communication of our plans had to take place.

The plan to offer pool memberships to those citizens who are not paying POA dues this year has been implemented. The response has been slow

as of mid-April, but interest in pool use increases as the weather warms and school finishes for the summer. We continue to gather data reflecting interest in this approach through late summer.

With all these actions pending and so much uncertainty regarding the plan for 2027, the Board has decided to reschedule the Annual Membership meeting for this coming fall. The Annual Membership meeting is the time when a new Board is elected, and major changes can be put forth for membership approval. It is believed that by fall we will have a beginning plan in place for the new members of the Board to work from, and that a change in the Board in June would be challenging. Board members have found that it takes almost a year to become familiar with the roles we are required to fill and the rules regarding our functioning that are set forth by the original POA Charter and the state Non-For-Profit act under which we must function. Having a clear plan for the future of the amenities for the newly elected Board to use should assure that the progress made thus far is not lost.

Determining a solid plan for the future of the amenities continues to challenge this Board. We are trying to be open to all the suggestions,

concerns and thoughts that so many of you are willing to share. Thank you for taking the time to tell us your thoughts!

It is our desire to outline and initiate a plan in a timely

manner that ensures the recreational amenities will live on in perpetuity.

The Board of Directors thank you for the opportunity to serve the POA.

THE CLUB AT DIAMONDHEAD

MEMORIAL
Day
specials

SATURDAY, MAY 23

LIVE MUSIC???

Loaded Nathan's Hot Dog with Choice of Chips
and Domestic Beer \$7.00

228-255-2918 EXTENSION 122

Diamondhead News

The Diamondhead News is the ONLY official voice of the Diamondhead Country Club and Property Owners Association, Inc. As such, it is solely responsible for its content. The Diamondhead Property Owners Association, Inc. will maintain sole control of the editorial content. A monthly publication by the Diamondhead P.O.A.; offices are located at 7610 Country Club Circle, Diamondhead, MS 39525.

ALL SUBMISSION REQUESTS MUST BE SUBMITTED BY THE 15TH OF EVERY MONTH.

- **EMAIL: DHNEWS@DHPOA.ORG**
- **TELEPHONE: 228-255-1900**
- **EDITOR: CANDICE SEITZ**

Subscription info: DHPOA Membership 255-1900
 The Sea Coast Echo will be responsible for production, printing, advertising and distribution (by mail) of The Diamondhead News. For advertising, call 228-467-5473.

Diamondhead Country Club & Property Owners Association, Inc.

March 31, 2026

	Revenue	Expense	Net Gain/Loss	Depreciation	Net Income
Club	216,331.06	281,550.00	(65,218.94)	4,164.71	(69,383.65)
Camphouse	6,500.00	4,797.93	1,702.07	3,709.82	(2,007.75)
Golf	304,934.11	64,483.27	240,450.84	7,214.75	233,236.09
Golf Academy	4,820.98	10,912.07	(6,091.09)	-	(6,091.09)
GCM		179,339.88	(179,339.88)	18,138.57	(197,478.45)
Grounds		20,156.02	(20,156.02)		(20,156.02)
Recreation	455.00	14,634.10	(14,179.10)	5,946.38	(20,125.48)
Community/Twin Lakes		-	-	-	-
Tennis	3,500.00	1,065.79	2,434.21	3,883.16	(1,448.95)
Marina	8,079.26	7,044.23	1,035.03	5,491.21	(4,456.18)
Facilities		24,709.73	(24,709.73)	771.68	(25,481.41)
Marketing		11,884.21	(11,884.21)	-	(11,884.21)
Admin	1,927.92	70,940.70	(69,012.78)	12,908.45	(81,921.23)
Membership	263,098.44		263,098.44	-	263,098.44
Airport		170.26	(170.26)		(170.26)
RV Storage	4,460.00	545.78	3,914.22		4,162.40
	814,106.77	692,233.97	121,872.80		59,892.25

POA BOARD OF DIRECTORS

- | | |
|--|--|
| Nancy Sislow (president) 847-271-7474
nsislow@dhpoa.org | Ernest Lee (director) 832-465-9072
elee@dhpoa.org |
| Trey Giarrusso (vice president) 504-460-1717
tgiarrusso@dhpoa.org | Bob Pineau (director) 734-347-2897
bpineau@dhpoa.org |
| Brice Howard (treasurer)
bhoward@dhpoa.org | Patricia Burgoyne (secretary) 504-669-2541
pburgoyne@dhpoa.org |
| Dr. Arlen "Ken" Griffey (director) 228-216-4447
kgriffey@dhpoa.org | Michael Tubbs (director) 757-817-5917
mtubbs@dhpoa.org |
| Stuart Nutting (director) 228-363-2549 | Gary Becker (ex officio) 813-215-2761
gbecker@dhpoa.org |
| Ronnie LaFontaine (director) 228-671-9169
riafontaine@dhpoa.org | |

ASSOCIATION STAFF

- Hoppy Smith.....General Manager
- Darrion McInnis.....Controller
- Candice Seitz.....Managing Editor
- Chris Altese.....Director of Golf
- Dan Hamman.....Golf Superintendent
- Adam Humphrey.....Facilities Superintendent
- Dianne Simonson.....Harbor Master
- Nancy Perkins.....Sales & Marketing
- Andrea Jones.....Legal/HR Administrator

EXTENSION DIRECTORY

- POA Office 255-1900 or 1-800-321-3840
- Fax 255-4296
- Airport 255-0502
- Facilities Maintenance 255-3343
- Country Club 255-2918
- 19th Hole 255-5005
- Fire District/Emergency 911/Business 255-1314
- Golf Pro Shop 255-3910
- Golf Tee Times 255-5517 or 1-800-346-8741
- Marina 228-216-9059
- Personnel 255-1900 ex-123
- Diamondhead Water & Sewer District 255-5813
- Tennis World 255-5030
- Waste Collection 832-3144

January 1, 2026 - March 31, 2026

	Revenue	Expense	Net Gain/Loss	Depreciation	Net Income
Club	699,005.13	832,530.06	(133,524.93)	12,494.13	(146,019.06)
Camphouse	19,500.00	13,972.61	5,527.39	11,129.46	(5,602.07)
Golf	705,627.03	180,794.42	524,832.61	21,644.25	503,188.36
Golf Academy	4,820.98	25,913.30	(21,092.32)	-	(21,092.32)
GCM		470,828.86	(470,828.86)	54,415.71	(525,244.57)
Grounds		66,058.74	(66,058.74)	-	(66,058.74)
Recreation	690.00	46,267.67	(45,577.67)	17,839.14	(63,416.81)
Community/Twin Lakes		3,012.69	(3,012.69)	-	(3,012.69)
Tennis	10,500.00	3,447.03	7,052.97	11,649.48	(4,596.51)
Marina	23,030.59	19,759.81	3,270.78	16,473.63	(13,202.85)
Facilities		66,606.78	(66,606.78)	2,315.04	(68,921.82)
Marketing		48,738.75	(48,738.75)	-	(48,738.75)
Admin	11,298.55	218,190.57	(206,892.02)	38,725.35	(245,617.37)
Membership	734,702.92		734,702.92	-	734,702.92
Airport		304.27	(304.27)		(304.27)
RV Storage	13,830.00	1,622.43	12,207.57		12,207.57
	2,223,005.20	1,998,047.99	224,957.21		38,271.02

The **POA** Board meets every month on the 3rd Monday at City Hall. All meetings begin at 6:00pm. Every meeting is live-streamed and can be found on YouTube.



• COMMUNITY

What's Happening at Your Library in May?

May is here, and we are busy planning an exciting and engaging summer at the library! Our annual Summer Reading Program for children will kick off in June, and this year's theme is "Unearth A Story." Throughout the summer, we'll be digging into the fascinating world of dinosaurs, fossils, and prehistoric life with fun activities, stories, and hands-on learning experiences designed to spark curiosity and imagination in young readers.

Also in June, we are proud to host our annual children's art program, which will celebrate the diversity and history of America over the past 250 years. This special program is made possible thanks to the dedication and creativity of our wonderful local volunteers, and we are so grateful for the time and talent they share with our community. The East Hancock Library will have a variety of exciting programs and events this summer, so be sure to keep an eye on our library calendar for updates and additional details as they are announced.

We would also like to extend a huge thank you to the City of Diamondhead, the Visiting Pet Teams of South Mississippi, and everyone who joined us for the dog park opening last month. It was such a joy to be part of this fantastic community celebration! We had a wonderful time hosting the Easter egg hunt, meeting so many of our local furry patrons, and connecting with members of our community. Events like these remind us how special

our community truly is, and we are grateful to have been included.

In addition to our special events, our regular weekly programming continues to provide opportunities for learning, creativity, and connection. Join us every Monday from 10:30–11:30 a.m. for Story Time and Crafts, a fun and engaging hour designed to support early literacy, encourage social interaction, and foster a lifelong love of reading in young children.

On the first and third Mondays, we host Painting with Elen, a wonderful opportunity to explore creativity in a relaxed and supportive environment. Elen also leads Conversations in Spanish for adults every Thursday from 2–3 p.m., offering a welcoming space for participants to practice their language skills, build confidence, and enjoy conversation with others.

Our new informal book club meets on the second and fourth Mondays from 2–3 p.m. This group is perfect for readers who enjoy sharing recommendations and discussing books in a casual setting. There is no required reading, so participants are free to talk about whatever they are currently enjoying.

Families are also invited to join us for Family Bingo Night on the second Thursday of each month from 4–5:30 p.m. Enjoy an afternoon of fun, games, and light refreshments in a friendly, family-oriented atmosphere.

Fridays bring opportunities for both movement and creativity.

Strength and Flexibility meets from 10 a.m.–12 p.m. and is an instructor-led, seated fitness class designed especially for older adults and patrons with disabilities who are looking for gentle exercise and stretching. Participants are encouraged to bring water and wear comfortable clothing.

Later in the afternoon, from 1–3 p.m., we host Crafts and Conversation, a relaxed, come-and-go gath-

ering where community members can bring their own projects and enjoy crafting alongside others. While there is no formal instruction, it's a great opportunity to connect, share ideas, and enjoy good company.

We are proud to offer programs that bring people together, inspire creativity, and support lifelong learning. We hope to see you soon at one of our upcoming events!

**Home & auto.
Bundle & save.**

Call me for a quote today

State Farm

Mike Meyers
Agent

835 Highway 90
Bay St. Louis, MS 39520-1630

Bus: 228-467-5011
mike@mikemeyers.us

Availability and amount of discounts and savings vary by state.
State Farm Mutual Automobile Insurance Company, State Farm Indemnity Company, State Farm Fire and Casualty Company,
State Farm General Insurance Company, Bloomington, IL
State Farm County Mutual Insurance Company of Texas, State Farm Lloyds, Rockdale, TX
State Farm Florida Insurance Company, Winter Haven, FL



Lindsey Lind
CBX, REALTOR®

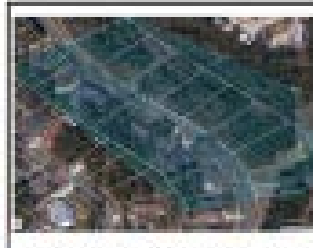
D: 228-216-8512 | O: 228-467-0244
lindseylindrichard@gmail.com



COLDWELL BANKER
ALFONSO
REALTY, INC.



8428 Iles Drive | Diamondhead
4 Bed | 2.5 Bath | 1,822 sqft | \$258,000



0 Golf Club Drive | Diamondhead
0.27 Acres | \$98,000



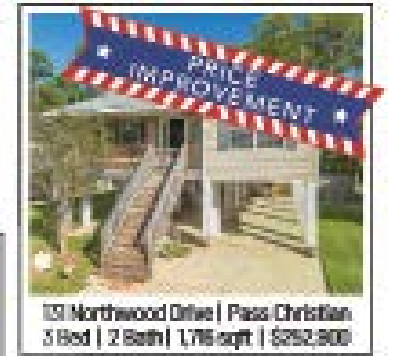
9520 Kalkimeka Place | Diamondhead
4 Bed | 5 Bath | 3,086 sqft | \$358,000



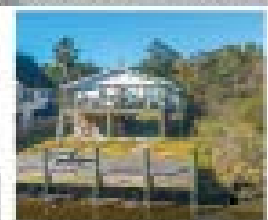
1303 Waveland Ave. | Waveland
0.29 Acres | \$99,000
Cleared Lot ready for a new home! Within blocks of beautiful beaches of the MS Gulf Coast & Golf Cart ride to Old Town Bay St. Louis.



521 State Street | Bay Saint Louis
2 Bed | 1 Bath | 1,365 sqft | \$429,000
Adorable 1960s cottage in the heart of the Historic District of Bay St. Louis. Light, bright & cheery with hard wood floors throughout. Enjoy your morning coffee or evening cocktail on large covered porch overlooking the yard. High elevation & X Flood Zone. Detached 2-car carport & two storage sheds, as well as a sunken Florida room with a bonus fridge & wet bar. Perfect for entertaining or an artist's studio!



131 Northwood Drive | Pass Christian
3 Bed | 2 Bath | 1,716 sqft | \$252,800



814 Cornelia Dr. | Bay St. Louis
3 Bed | 2 Bath
1,200 sqft | \$299,000

Coastal getaway with open living & kitchen area, spacious bedrooms, stainless appliances, new decking & plenty of natural light! Ample parking, new bulkhead, elevator & dock.



4300 Finetooth Road | Kiln
3 Bed | 2 Bath | 1,825 sqft | \$329,000

Come by & see this Beautiful Brand New Construction home in Kiln, MS! Features split bedroom floorplan with spacious master suite & soaking tub, Vinyl Flooring, Granite Countertops, Stainless Appliances, ample storage, & great closets are just a few features in this home. The builder thought of every detail! Sits on just under one acre.



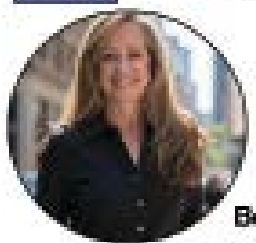
2300A Highway 605 | Kiln
5 Bed | 2.5 Bath | 2,289 sqft | \$374,000

Home sits on just over 3 acres and is located in a High and Dry area in North Hancock County. The home features 5 bedrooms, 2.5 bath, formal dining, spacious laundry, and breakfast nook. This home has so much potential and is ready for your personal touch. Ac. units were installed in 2024. RV Access/Parking

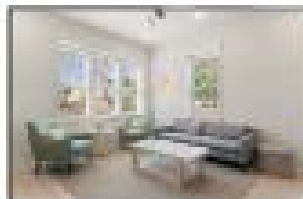


COLDWELL BANKER
ALFONSO
REALTY, INC.

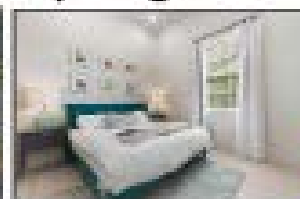
Where historic charm meets modern day living!



Betsy Montjoy
D: 228-547-2858
O: 228-467-0244



315 Main Street
Bay St. Louis
Prices starting at \$339,000



THIS BEAUTIFULLY RESTORED LANDMARK HAS BEEN THOUGHTFULLY REIMAGINED TO PRESERVE ITS TIMELESS CHARACTER WHILE OFFERING ALL THE COMFORTS OF CONTEMPORARY LIVING. EACH RESIDENCE FEATURES A UNIQUE LAYOUT. WHETHER YOU'RE SEEKING A FULL-TIME RESIDENCE, A WEEKEND GETAWAY, OR A SHORT-TERM RENTAL OPPORTUNITY, 315 MAIN STREET HAS SOMETHING EXCEPTIONAL TO OFFER.

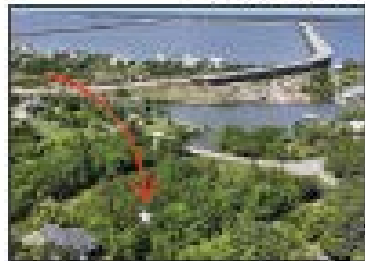
- OUR FEATURES**
- 1 TO 2 BEDROOM UNITS
 - 10-FOOT CEILINGS & DESIGNER LIGHTING
 - STAINLESS STEEL APPLIANCES & STONE COUNTERTOPS
 - STACKABLE WASHER/DRYER
 - ENERGY-EFFICIENT HVAC SYSTEM
 - LUXURY VINYL FLOORING
 - PRIVATE BALCONIES
 - FULLY FURNISHED - RIGHT DOWN TO THE SILVERWARE!

★★★★★
5 star rating on Internet Real Estate Sites



326 S Central Avenue
Waveland
3 Bed | 3 Bath | 1,367 sqft | \$214,000

Charming Ranch Home with spacious layout and on a corner lot. Features: living room, eat-in kitchen, full-sized laundry room, master suite with on suite bathroom, neutral colors throughout, large, fenced-in backyard with shed. Home is move-in ready and is a perfect blend of comfort & convenience! Schedule a viewing today!



105 Stennis St. | Pass Christian
0.8 Acres | \$88,000

Build your dream home on this beautiful wooded lot! Approx. 154 ft road frontage & 174 ft along the water, this over half-acre property offers plenty of space to create your perfect coastal getaway. Enjoy peaceful water views, boating and Golf Coast sunset!

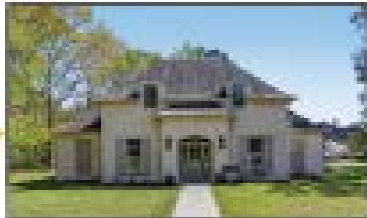
MEMORIAL DAY



COLDWELL BANKER ALFONSO REALTY, INC.



Brent Allison
D: 228-216-1269
C: 228-255-3550



49 Lanook Drive, Pigeon
4 bed / 3 bath / 2536 SqFt

All-brick 4BR/3BA executive home on .95 acres with open split plan, luxury vinyl floors, quartz counters, Thor gas range, and two fireplaces. Spacious primary suite with soaking tub, tile shower, and huge closet. Extras include generator hookup, two water heaters, walk-up attic, and oversized garage. Large lot with porch, outdoor fireplace, and room to relax or entertain.

(228) 255-5288 CALL TO MAKE AN APPOINTMENT

For other rentals: alfonsopm.com

ALFONSO PROPERTY MANAGEMENT, LLC

8526 Koko Way
Diamondhead
3 bed, 2 bath
Rent: \$1750.00

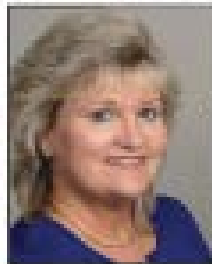


Corner lot with side-entry 2-car garage. Split floor plan gives extra privacy. Open living room with fireplace & dining area—great for entertaining. Primary bedroom has walk-in closet, soaking tub, separate shower & double sinks. No carpet—vinyl & tile floors throughout. Backyard is small & low-maintenance (not fenced). Call to set up a showing!



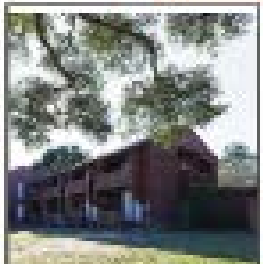
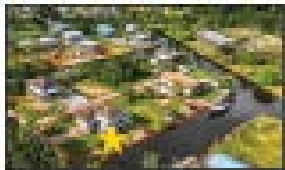
98191 Kapalama Dr., Diamondhead
3 BR, 2 Bath Rent: \$1750.00

This Home has NO REFRIGERATOR. This All Brick Home Features A Double Car Garage, Fireplace, Large Kitchen, Family room with fireplace, Split plan with primary on the back of the house. Owner prefers No Pets...



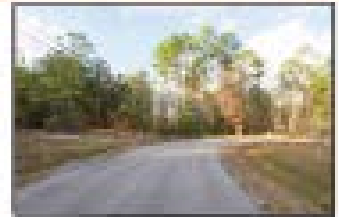
COLDWELL BANKER ALFONSO REALTY, INC.

Lynn Grego
D: 228-223-9903 | C: 228-255-3550



6620 Manoa Place | Diamondhead
2 Bed | 2 Bath | 1536 sqft | \$263,500

Updated home on peaceful cul-de-sac. Recent updates: new flooring, steel rack, fresh interior & exterior paint, molding & baseboards, new outlets, cabinetry, windows, plumbing fixtures, light fixtures, stylish new front door, quartz countertops, new appliances, commodes, sinks, & toilets. Newly installed sidewalk & lush new grass. HVAC system only 2 years old & roof just 3 years old (one year warranty included)



Choctaw Place | Kiln
0.25 Acres | \$17,500

Jordan River Shores lot cleared & ready to build your dream home or camp site. Nestled in a cul-de-sac with few trees. Make this property your new home site of choice. Owner will finance. Minutes from I-10 and sunny beaches.

10199 Whale Avenue | Bay Saint Louis
3 Bed | 3 Bath | 1724 sqft | \$385,000

Coastal retreat on four spacious lots. Inside features two luxurious master suites with crown molding, custom built-ins, & abundant storage. Lower level includes large workshop & storage space for hobbies & equipment. Convenient RV hookup, making property as functional as it is beautiful. This home delivers the ultimate coastal life style with private pergola & expansive wraparound porch to soak in the scenery. ***The sellers will contribute a \$2,000 flooring allowance to replace the upstairs carpet.

208 Lakeside Villa Unit A | \$73,000

End unit, it features abundant natural light and has been thoughtfully updated with new carpeting, a new water heater, and ceramic tile flooring, including ceramic tile shower.



Call me today to discuss **BUYING, SELLING OR INVESTING!**

Gina Bradley
D: 985-290-0280
C: 228-255-3550



2071 Stone Bridge Drive | Biloxi
4 Bed | 2.5 Bath | 2804 sqft | \$349,900

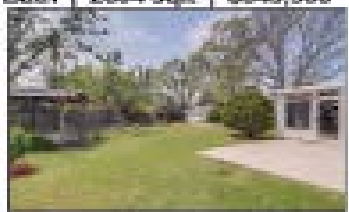
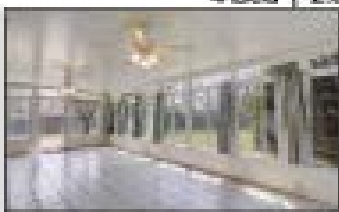
Spacious home situated on oversized lot just off Propps Ferry in Stonebridge neighborhood. Well-maintained property offers comfort, space & functionality. Main level features formal living room, large family room with gas fireplace, formal dining area, sunroom primary bedroom and bath. Three additional bedrooms & full bath are situated upstairs. The home includes two HVAC units (2), a newer roof for peace of mind. Expansive yard offers plenty of outdoor enjoyment, complete with large shed with electricity & a charming gazebo.



134 Demottuzin Ave. Bay St. Louis
2 Bed | 2 Bath
1168 sqft | \$375,900

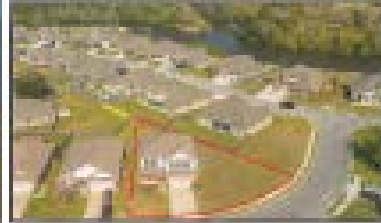
SELLER WILL CONSIDER ALL REASONABLE OFFERS!!!!

New Orleans Charm in the Heart of Bay St. Louis! Discover the perfect blend of Southern elegance & modern comfort in this stunning home, situated within walking distance of the beachfront. Located on one of Downtown's most sought-after streets, this newer home radiates timeless charm & offers spacious, contemporary living. Just steps from the lively heart of the Bay, enjoy easy access to local restaurants, boutique shops, & entertainment. Inside, soaring ceilings, detailed moldings, & durable waterproof laminate flooring set the tone for refined yet relaxed living. Furnishings are negotiable, offering flexibility for a move-in-ready experience.



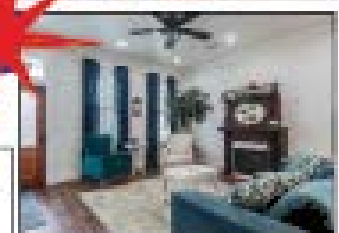
2 great family homes on the Coast- don't miss your opportunity! Call me today for a showing before they are GONE

3776 River Trace Drive | D'Iberville
4 Bed | 3.6 Bath | 2496 sqft | \$332,000



****Seller offering closing concessions with reasonable offer****

Spacious Family Home or Investment Opportunity Offering the perfect blend of comfort & convenience. Features: oversized bonus room, large and well-maintained fenced yard, located just behind the Promenade Mall, close to shopping, dining, & entertainment, in a highly sought-after school district. A must-see property that combines location, space, and value — perfect for families or investors alike.



COLDWELL BANKER ALFONSO REALTY, INC.



Diamondhead Office
4300 Gex Rd.
228-355-0255

CELEBRATE, HONOR, REMEMBER

MEMORIAL Day

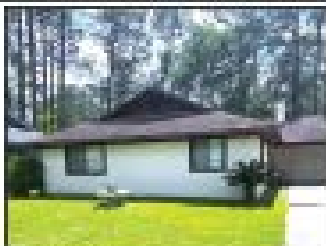
May we all take a moment today with our family and friends to remember, honor and appreciate the American heroes who made the ultimate sacrifice.

Looking to BUY or SELL in Diamondhead?

First quarter started off **STRONG!!!**
Sales are and the market is heating up too !!!

Call one of our friendly agents today to assist you!

- Residential
- Commercial
- Property Management
- alfonso.com



**1 Quail Creek Drive
Diamondhead**

- 3 Bed
- 2 Bath
- 1635 sqft
- 0.21 Acres
- Stucco exterior

Offered at: \$175,000

Carmen Ferra, REALTOR®
D: 228-342-1184
O: 228-255-3550
carmenferra614@gmail.com
COLDWELL BANKER
ALFONSO REALTY, INC.

Great corner location in the Oaks. Electric fountain in front yard. Cute home with large 380 bedroom with ceramic tile floor. Beautiful wood burning fire place in family room / dining combo. Separate kitchen with washer/dryer. Sun room with a/c unit. Furniture will stay in house. Fenced side patio. Garage with work bench & storage closet.



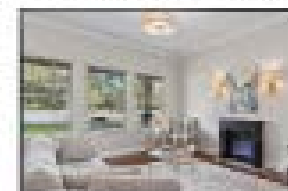
COLDWELL BANKER ALFONSO REALTY, INC.
Office: 228-287-1000
9153 Lorraine Rd. Gulfport, MS



**87001 Beaux Vue Court
Diamondhead**

Kim Carlson, REALTOR®
C: 985.249.1669
O: 228.287.1000
kimcarlsonrealtor@gmail.com

3 Bed | 2 Bath | 0.24 Acres | 1955 sqft | \$333,900
Fabulous, new construction with high quality features including real hard wood floors, high end light fixtures, tall ceilings and hard to find side garage on spacious high and dry flood zone X lot near the golf course in Beaux Vue. White shaker kitchen with 40" glass door upper cabinets, Quartz counters, and nearly impossible to find Oes cooking, Bosch dishwasher and Beko refrigerator. Tankless water heater. Five piece primary bath with showstopper free-standing tub and chandelier!



TRUSTED ADVISORS.
SKILLED NEGOTIATORS.
COMMUNITY LEADERS.



*That's Who We Are At
Coldwell Banker Alfonso Realty*

Visit any of our 5 locations across the MS Gulf Coast

Bay St Louis (228) 467-0244 Diamondhead (228) 255-3550
Gulfport (228) 287-1000 Ocean Springs (228) 875-1272
Pascagoula (228) 769-7777

• CHURCHES

ST. THOMAS EPISCOPAL CHURCH

5303 Diamondhead Circle
Diamondhead, MS 39525-3203
(228) 255-9213
mail@stthomasdiamondhead.org
WORSHIP TIMES
Sunday 9:00 am Holy Eucharist followed by
Hospitality Hour
Wednesday prayer service and potluck
dinner 5:30pm weekly

DIAMONDHEAD COMMUNITY CHURCH

5301 Diamondhead Circle
(288) 255-5556
dhcommunitychurch.org
Worship Service
Please join us on Sundays at 10 am for wor-
ship services with Pastor Stan Van Den Berg.
Christian Education
We have Sunday school classes at 9 am for
adults as well as children (by age group). In
addition, Children's Church is held during a
portion of the worship hour.
Nursery Care
Nursery care is provided between 9 and 11
am.
Fellowship
All are welcome to join us for snacks and
Christian fellowship at 11 am following the
worship service.
Children's Choir
Parents, we offer exciting opportunities for
your children ages 5-12 and 13-17 to partic-
ipate in our youth choirs.
Pre-School
Little School is still taking 2025-2026 regis-
tration. Little School hours are 8 am-12pm
Mon – Fri. We still have a few spots open.

DIAMONDHEAD METHODIST CHURCH A GLOBAL METHODIST CHURCH

5305 Noma Drive
Diamondhead, MS 39525
Office: 228-255-6888
Sunday Worship Service: 10: a.m.

Meet and Greet Sunday: 9:30 to 9:55 a.m.
"Greetings! in the name of our Lord Jesus
the Christ! We welcome all who are new or
looking for a dynamic worship experience.
Our new pastor, Reverend Shelley Hill
is here and we are delighted with the
wonderful things happening through the
guidance of the Holy Spirit.
We welcome and encourage everyone
regardless of current or former denomi-
national involvement, hazed or inflicted
upon by Past "Christian" association or even
socially shunned. We are a growing home
of God to be shared by all who attend. We
currently meet for 2 women's, 2 men's, 1 co-
ed and multiple opportunities for gathering
activities in His name throughout the week!
All meetings are here at the church.
email: office@diamondheadmethodist-
church.org, Facebook: Diamondhead Meth-
odist Church
Website: www.diamondheadmethodist-
church.org (under construction)

JACOB'S WELL BAPTIST CHURCH

29554 Vic Faye Road, Pass
Christian, MS 39571;
228-255-2555,
jwbcadmin@icloud.com
Sundays:
Worship | 8:45 a.m. & 11 a.m.
Bible study | 10 a.m.
Wednesdays:
Fellowship meal, 5:45-6:20 p.m.
Adult & Youth Bible study, 6:30-7:30 pm..
Children's Awana Program, 6:30-7:30 p.m.
Nursery care at all services
"Called to magnify God, make disciples,
and minister to people"

ANNUNCIATION CATHOLIC CHURCH

5370 Kiln-DeLisle Rd. Kiln, MS 39556
(228)255-1800 | www.annunciationkiln.
com
Masses: Saturday Vigil 4:00 p.m.; Sunday
8:00 a.m. and 10:30 a.m.; Weekday 8:00 a.m.
(Chapel)
Sacrament of Reconciliation: Saturday 3

p.m. to 3:45 p.m.; Sunday 9:45 a.m. to 10:15
a.m. and other times by appointment.
Adoration: Tuesday 8:30 a.m. to 8:00 p.m.;
Friday 8:30 a.m. to 9:30 a.m.

LUTHERAN CHURCH OF THE PINES

309 Highway 90
Waveland, MS 39576
228-467-6771
Pastor Brock Cain
Services every Sunday morning are at 10:00
a.m.
Sunday School for children and adults at
9:00 a.m.
Every Wed., we offer Bible study at 1 p.m.

OLD TOWN PRESBYTERIAN CHURCH, PCUSA

114 Ulman Ave.
Bay St. Louis, MS 39520
Pastor: Rev. Richard T. Gillespie, Th.D.
Phone: 256-443-4100 Website: oldtown-
presbyterian.org
Sunday Services:
9 am Adult Sunday School
10 am Worship Service
Children's Church, ages 5-12
11 am Hospitality for all in our Fellowship
Hall
Open Table Communion - first Sunday each
month
Presbyterian Women's Monthly Bible Study
Join us as we share the Gospel, bear witness
to Christ's love, and work for justice, peace,
and care of the world and its resources.

CENTRAL BIBLE CHURCH

You're Invited to Join Us for Worship!
Central Bible Church in Bay St. Louis (across
the highway from the BSL Post Office)...the
home of The King's Kitchen soup kitchen.
Sundays at 9:30 AM for Sunday School and
11:00 AM for morning worship. Wednesdays
at 6 PM for Youth services.
Senior Pastor: Rev. Mike Ramsey, Th.D.
Outreach Pastor: Rev. Connie Lyons

Church Office: (228) 493-4796
"Where the Ministry of the Holy Spirit takes
place under the Lordship of Jesus Christ to
the glory of God the Father!"

THE CHURCH AT 112

Romans 1:12 -- "When we get together, I
want to encourage you in your faith, but
I also want to be encouraged by yours."
(NLT)
17077 Kapalama Dr., Suite B
Pass Christian, MS 39571
Pastor: James Reardon
Email: james@c112.org.

Our mission is to help encourage the peo-
ple of Diamondhead and the surrounding
areas towards faith in Christ. Our desire is
to minister to both the unchurched (those
with little or no church experience) and
those we call the de-churched (individuals
who have been hurt in the past or disil-
lusioned by the actions of some within a
church setting).
Join us in worship -- Sunday at 10 a.m.
We also extend an invitation for you to
attend one or more of C 112's monthly
activities and events. We offer men's, wom-
en's and mixed small groups/Bible studies;
children, youth, and family activities. Please
check out C 112's regularly updated Face-
book page and our website to find out the
time, place and description of the events in
which you are most interested.
Facebook: C112
Website: c112.org.
Download C112 app: C112

MOST HOLY TRINITY CATHOLIC CHURCH

9062 Kiln Delisle Road
Pass Christian, MS 39571
228-255-1294
Email: admin@mhtcatholic.org
Website: http://mhtcatholic.org
Mass Times:
Monday – Friday: 8:00 a.m.
Saturday: 4:00 & 6:00 p.m.
Sunday: 7:30, 9:00, 11:00 a.m. & 7:00 p.m.
Greetings! Please join is for the following
events. All are welcome!

• COMMUNITY

Step Into Wonderland: DSFA Announces Auditions for Disney's Alice in Wonderland JR

The Diamondhead School of Fine Arts (DSFA) is excited to announce auditions for Disney's Alice in Wonderland JR., an imaginative and lively production that brings the beloved story of Alice and her adventures in Wonderland to the stage.

Students ages 7–18 are invited to audition for the Theatre Department, while dancers ages 8–18 are encouraged to participate in dance auditions. Additionally, DSFA's Vibrant Voices vocal program is welcoming new members — no audition required — offering even more opportunities for students to be part of this magical production.

Auditions will take place at the DSFA campus:

- Theatre Auditions: May 16–17 from 1:00–3:00 PM

- Dance Auditions: May 16 from 3:00–4:00 PM

Vibrant Voices students can join by

attending a Meet & Greet on Sunday, May 17 from 3:00–4:00 PM.

Participants should come prepared with a 30–60 second song from a Disney musical or film, along with comfortable clothing for movement and character work. No prior experience is required—just creativity, enthusiasm, and a willingness to explore the whimsical world of Wonderland.

Rehearsals will begin the week of May 19 at the DSFA campus, with ongoing rehearsals scheduled throughout the summer. A mandatory parent meeting will be held on Tuesday, May 19 at East Hancock Library.

Performance dates are scheduled for:

- July 24 & 25 at 7:00 PM

- July 26 at 2:00 PM

at The Randolph Center in Pass Christian.

The registration fee is \$35, with

financial assistance available to ensure accessibility for all students.

“This production is all about imagination, creativity, and bringing big characters to life,” says Sarah Shelton, Founder and Executive Director of DSFA. “We are looking for bold, expressive performers ready to dive down the rabbit hole and create something truly special together.”

Students and families can sign up to audition at:

www.dsfa.org/auditions

About Diamondhead School of Fine Arts

Founded in 2021, the Diamondhead School of Fine Arts (DSFA) is a non-profit arts organization dedicated to providing inclusive, high-quality arts education to students of all ages. With departments in Dance, Music, Language, Art, Theatre, and Health & Wellness, DSFA inspires creativity, confidence, and community throughout the Mississippi Gulf Coast.

Diamondhead Cub Scouts “Strikes, Scouts, and Service: Pack 210 Rolls Through a Year of Adventure”

Diamondhead's Cub Scout Pack 210 has wrapped up an exciting and successful 2025 to 2026 school year, meeting each Monday at 6 p.m. at Park Ten Lanes Bowling Alley. Thanks to the generosity of the owner and staff, the Pack has enjoyed a welcoming space in a recently remodeled meeting room. Pack leaders and families extend a heartfelt thank you to Park Ten for helping make this year possible.

Throughout the year, the Cub Scouts of Pack 210 have stayed busy with a wide range of activities designed to build character, skills, and friendships. From community parades to outdoor campouts and hands on adventures, these young Scouts have embraced every opportunity to learn and grow. Along the way, they earned awards and developed important life skills rooted in the values of Scouting America.

A major highlight of the year was the recent crossover ceremony, where

Free Admission!

220 Main St., Bay St. Louis

ALICE MOSELEY

FOLK ART MUSEUM
BAY ST. LOUIS, MS

Now Open inside Gallery 220!!!

Open 11-5, Mon.-Sat., 12-4 on Sunday

www.alicemosley.com

• COMMUNITY

five Arrow of Light Scouts, the highest rank in Cub Scouting, advanced into Diamondhead's Troop 210. This milestone marks an important step in their Scouting journey as they transition into the next phase of leadership and adventure.

Pack 210's success is a direct reflection of the dedication shown by its volunteer parents, grandparents, and

guardians. Their commitment ensures that the youth of Diamondhead are supported, encouraged, and given opportunities to thrive.

Special emphasis this year was placed on learning and living the Scout Oath, the Scout Law, and the Cub Scout motto, "Do Your Best." These guiding principles have helped shape not only better Scouts, but stronger



members of the community. As the school year comes

to a close, the adventures are far from over. Pack 210 is already planning an exciting lineup of summer activities to keep Scouts engaged and active.

Families in the Diamondhead area with children ages 5 to 10, or grandparents looking to get their grandchildren involved, are encouraged

to join the fun. New Scouts are always welcome, and the Pack continues to grow.

For more information or to sign up, visit www.beascout.org

Pack 210 looks forward to welcoming the next generation of Cub Scouts, ready to learn, explore, and always do their best.

• CLUBS

DIAMONDHEAD GARDEN CLUB

BY GRETCHEN KLINEFELTER

May in South Mississippi brings balmy air, vibrant magnolia blooms and lingering sunsets, making it the perfect time to sit back and savor the season. We hope you find time to walk through your garden and breath in the scent of jasmine and gardenias, summer is on our doorstep.

A committee within Diamondhead Garden Club helped establish Maluhia Garden after Hurricane Katrina. Following the devastating storm, past garden club member and President, Mrs. Susan Holcomb, was instrumental in the project. Through her efforts, Diamondhead Garden Club received a grant from NGC, Inc. for disaster restoration. Diamondhead POA donated and cleared two unbuildable lots for the garden. Numerous volunteers stepped up to

assist with this massive undertaking by building bridges, putting in sidewalks, constructing the gazebo and installing a sprinkler system. A Blue Star Memorial By-Way marker was installed and subsequently dedicated to honor our U.S. Armed Forces in a Veterans Memorial area.

Fast forward a few decades, and the once-beautiful Maluhia Garden is in need of care. Fortunately, there is hope in sight, with a new beautification project underway. Our current Maluhia Garden chairperson is Mrs. Patti Simmons, who is committed to the revitalization of Diamondhead's community garden. About a year ago, she walked the garden and was appalled at its condition. She contacted the city in the hope of help. She expressed her concerns along with her vision. Mrs. Simmons explained, "The city has been so good to help with the restoration and they

BUCK RAMOND

HEATING AND AIR

- 10 YEAR PARTS & LABOR | FREON INCLUDED
- FINANCING AVAILABLE
- NEW CONSTRUCTION, CHANGE OUTS & SERVICE AGREEMENTS AVAILABLE.

228.467.1212

Rheem
American Standard

2109 NICHOLSON AVE. ♀ WAVELAND, MS

• CLUBS

have agreed to do everything I have asked of them.” Work kicked off with the removal of seven tons of debris from the garden. Since then the city’s ground crew have reconfigured and reworked many of the garden beds under Mrs. Simmons’ guidance. She noted, “Significant strides have been made, yet substantial work remains.” For example, the original sprinkler system on the property had fallen into disrepair. The garden currently operates with one functioning faucet, with a second unit scheduled for installation. In March, Mrs. Simmons applied for and received, ‘The Plant America Blue Star Memorial Beautification Grant’ from National Garden Clubs, Inc. Her design includes the planting of red and white azaleas along with the installation of two new planters that will display seasonal flowers and plants. Grant money also includes the dirt, fertilizer and mulch it will take for the new trees to flourish. When asked about her vision for Maluhia Garden, she replied, “What I hope to see is a sanctuary filled with lush greenery and colorful blooms.” The word Maluhia translates directly to peace, tranquility and serenity in Hawaiian. It carries deep cultural significance related to safety and rest. Mrs. Simmons commented, “Maluhia Garden began with community friends working together and it will take the community to bring it back and keep it beautiful.”

It was a privilege to have Mr. Tim Ray, Hancock County Extension agent via MSU,

join us for our April program. In honor of National Arbor Day, Mr. Ray used his time to share practical knowledge on tree selection, proper planting techniques, long-term tree care and environmental benefits of trees. We are grateful for the opportunity to have learned from him.

Diamondhead Garden Club meets the third Wednesday of each month at Diamondhead Community Church in the Activities Room. We hope you will join us Wednesday, May 20 for our last club meeting and program before we break for summer. Our program host is Mrs. Polly Cuevas. Mrs. Cuevas’ family is the owner of Pine Hills Nursery in Pass Christian. We are fortunate to have Pine Hills Nursery minutes away from Diamondhead with the assortment of beautiful plants and their knowledgeable staff. Club social time begins at 9:30 a.m. with our meeting to follow at 10:00 a.m. All Diamondhead residents are welcome.

With May’s arrival, your garden is calling. It is time to plant shade flowers of impatiens, coleus, sweet alyssum, and annual dianthus. You will want to get verberna, periwinkle, marigolds, zinnias, petunias, clematis, four-o’clocks and portulaca planted in full sun areas. Cucumbers, tomatoes, peppers, squash, peas, beans and eggplant can be put in the ground. May’s arrival means it is time to scout for garden pests and apply pest control.

Don’t forget to check out our ‘Live Oak Tree’ ad follow-

ing this article.

May’s quote:

A weed is a plant that has mastered every survival skill except for learning how to grow in rows. Doug Larson

BE A PROUD OWNER OF A REGISTERED HISTORICAL LIVE OAK

Did you ever consider you



may have history growing in your yard? Diamondhead Garden Club is looking for

Live Oak Trees in our community that are 100 years in age or older. Not sure of your tree’s age? The tree must have a circumference of 9 ½ feet or greater measured at 4 ½ feet from the ground up. A Garden Club volunteer would be happy to assist you in determining that information. We can also help you get your tree registered with



The Longo Group

Independent Financial Firm

UNDERSTANDING YOU, YOUR FAMILY, YOUR BUSINESS
BECAUSE WE LISTEN

The Longo Group is an independent wealth management firm, committed to helping successful families, individuals, and business owners solve their financial concerns.

Our personalized approach is founded on our client-service culture and the disciplined planning process used to build customized financial plans. We believe in personal relationships, proactive outreach, and in-person communication.

We organize, simplify, and manage your financial life.

ADVICE & GUIDANCE

- Goals based wealth management
- Tax minimization strategies
- Investment portfolio assessment
- Education funding strategies

ESTATE GUIDANCE SERVICES

- Private Family Foundations, Trusts, & Donor Advised Funds
- Insurance and annuities
- Charitable giving

PROGRESS TRACKING

- Client reviews
- Asset allocation and management

The value of an advisory relationship is found to have often you get to be heard.
You can count on us to reach out.

Senior Wealth Management Advisors
Tori Longo, CFP®, ChFC, CLU, President
Steve Longo, Vice-President
Chris Collins, CRPS, CFP®, Vice-President - MC Alum '99



RETIREMENT

- Planning for retirement
- Managing 401(k) during job transitions
- Managing income in retirement
- Healthcare expense planning (Health Insurance, Social Security & Medicare)

INVESTMENTS

- Equity, Bond, Income strategies & CDs
- Concentrated stock services
- Managed account programs
- Alternative investments (AI)
- Limit investment trusts (LIT)
- Market-linked investments

2014 Gauss Blvd. E. | Slidell, LA 70461
Phone/Fax: 985.441.0942
Fax: 504.279.2379
Toll Free: 833.475.6696

info@longogroup.com | www.longogroup.com

The Longo Group is a Registered Investment Advisor. Securities, Investments and Investment Advice are provided by Longo Group Advisors, LLC. Investment Advice is provided by Longo Group Advisors, LLC. Member FINRA, SIF. Advisory services provided through Longo Group Advisors, LLC, a SEC Registered Investment Advisor. The Longo Group is not a bank, broker, or insurance company. Member FINRA, SIF.



COLDWELL
BANKER
ALFONSO
REALTY, INC.

228-467-0244



JOHN HALL

ABR, GRI, e-PRO

Diamondhead Resident since 1995

Call **SELL** phone:

(228) 669-6111

Also licensed in Alabama for
Orange Beach & Gulf Shores

"CALL HALL"



11 DEVIL'S ELBOW

3 BD, 2.5 BA | 2,300 SF | \$359,000



7515 AUGUSTA WAY

4 BD, 4 BA | 3,668 SF | \$664,900



7888 HILO WAY

3 BD, 2.5 BA | 2,359 SF | \$257,000



1324 ENOS ST

3 BD, 2.5 BA, 2,180 SF | \$725,000



57143 DIAMONDHEAD DR. E.

4 BD, 2.5 BA | 2,329 SF | \$394,000



87129 GOLF CLUB DR

3 BD, 2.5 BA, 3,080 SF, \$349,000

• CLUBS

Hancock County Historical Society and provide you with a certificate and a plaque for your tree that denotes the registered name you choose as well it's age.

Some historic Live Oaks fall just a bit short of these required measurements. We can still honor the significance of your tree. Your Live Oak would be 'recognized.' The owner of a recognized Live Oak would receive a certificate and a tree plaque. This also provides that your tree is on track for certification.

This is wonderful way to celebrate the beauty in Diamondhead, a Live Oak Tree City in Mississippi!

DIAMONDHEAD DEMOCRATS PROGRESSIVES INDEPENDENTS ALLIANCE BY LEANDRA BECKEMEYER

The May meeting of the Diamondhead Democrats Progressives Independents Alliance (DDPIA) will be on Thursday, May 21st at St. Thomas Episcopal Church, 5303 Diamondhead Circle. (DDPIA is not affiliated with St. Thomas.) Registration and social time begin at 10:00am followed by a guest speaker at 10:30. The business meeting follows the guest speaker. Past speakers include the Hancock County Library Director, the Hancock County Schools Superintendent, mayoral candidates, the director of the Boys and Girls Club of Bay St, Louis, representatives from the Gulf Coast Mutual Aid Collective, the executive director of the Biloxi Free Clinic, the POA president, and various political candidates. This month there will be a potluck lunch immediately following the meeting, to which all are invited. Come join us for an informative time, as well as mingling with a fun and interesting group of people.

DIAMONDHEAD WOMEN'S CLUB BY ROBIN B. GAINES

On Tuesday, April 14th, we held our annual Glitz and Titz fundraiser. Numerous items were available for our Silent and Live auctions, and we truly appreciate our many donors who made this a success. There were many wonderfully theme-decorated tables, with participants all decked out with feathers, rhinestones, glitter, you name it! The imagination and enthusiasm of these women were both contagious and electric!!! What a wonderful night!

We strive, through diligence, hard work, creativity and friendship, to continue our efforts to 'Support and Celebrate Women'. The objective of this club shall be to promote an informed and active interest in the civic, social and moral welfare of the



Cheer



Hearts



Treasure Chest

community: to serve the community through the dedication of time and energy for worthy purposes; and to undertake and complete one or more charitable, humanitarian or social welfare projects each year.

Our meetings (we do not meet in June, July, or August), are held the first Wednesday of each month from September to May, beginning at 11:00 a.m. at the Diamondhead Country Club, Emerald Ballroom. Membership is \$20.00 and is open to all women.

For more information about the Diamondhead Women's Club or any of our events, please contact the DHWC President, Rachel Huskins @ (504) 400-3013.

THURSDAY MORNING LINE DANCERS MOLLY KOONEY

Lessons and dancing, led by Molly, will be held from 10:00 - 11:00 am on THURSDAYS at the DIAMONDHEAD METHODIST CHURCH, 5305 Noma Drive. Across the street from City Hall.

Please wear comfortable soft soled shoes.

Great exercise, great fun, \$1 room rental per person.

FOR DETAILS OR CANCELLATIONS see our web site:

<https://sites.google.com/site/getmoving12345678/>

PARTY BRIDGE CLUB BY ELISE BREEN

HEALTH INSURANCE MEDICARE SPECIALISTS

Lisa Ladner Agency, LLC

5402 Aloha Dr. Suite C | Diamondhead, MS 39525

**Advantage Plans • Medigap Plans
Dental & Vision • Affordable Care Act**



Lisa Ladner
228-424-6125



Brittney Ladner King
228-343-2422



RE/MAX COAST DELTA REALTY



228-255-2600 | www.coastdeltarealty.com | 5400 Indian Hill Blvd. • Diamondhead, MS 39525



4044 CAMELLIA STREET-

Positive Income Producer. Duplex offer two 2-bedrooms 1 bath units with great rental history. Recently "renovated out front" and "you have being near trees but still like feature yard" Happy Tenant. MLS #4146095



94148 BAYOU DRIVE-

Custom trim work, updates, upgraded Master Bath, walk-in closets, deodorizable and a huge walk-in cooler door. A cooked Master with new Corian counter tops and tub. SELL #1146822



10418 MALAHINI PLACE-

Stunning, well-maintained residence located on 1/2 lot surrounded by serene Bayou, restaurant property. This home offers lovely views, elegant and modern including 3 bedrooms and 2.5 baths with open floorplan. MLS#41474798



310 FAIRWAY VILLA-

Beautiful golf course home located in the sought after Fairway Villa community in Diamondhead! This well-maintained 2019 2-BR residence offers comfortable living space with an open-concept layout, high ceilings, and abundant natural light. MLS# 4149088



84118 LOLA DRIVE-

Single-family home offers spacious, well-thought-out layout ideal for modern living. Built in 2005, the residence features 4 bedrooms and 3 bathrooms, providing ample space for families or those needing extra rooms for guests, a home office, or hobbies. MLS #4144717

— BEAUTIFUL HIGHPOINT TOWNHOMES —



222 HIGHPOINT DR.
MLS #4145892 - Only \$227,000



258 HIGHPOINT DR.
MLS #4145384 - Only \$229,900



291 HIGHPOINT DR.
MLS #4116376 - Only \$225,000

• CLUBS

The date for our next monthly gathering to play Party Bridge will be Friday, May 22, in the Kanaka Room at the Diamondhead Country Club. Our arrival time is 9:15 and we will begin playing at 9:30. If you have any questions regarding the Party Bridge Club, please contact Barbara Gibbons at (228) 760-1112 or Elise Breen at (228) 342-1529. The winners in March were Pat Burgoyne in First Place, Liz Leonard in Second Place, and Lisa Wisniewski in Third Place. Our Special Prize went to Barbara Gibbons.

PEO CHAPTER T

THURSDAY MORNING ART GROUP



Sip into Spring tea party- caption: P.E.O. Chapter T sisters recently held a "Sip Into Spring Tea Party" to benefit the seven P.E.O. projects which support women in their quest to further their education. Ladies dressed in their best spring attire including hats and fascinators! Guests were offered homemade cucumber and egg salad sandwiches, chicken salad and cream cheese canapes, and desserts of scones, chocolate bites, and lemon bars served on china three tier stands. The decor emphasized elegance and encouraged conversation over teas served in fine china cups, saucers and teapots. It was a lovely afternoon to celebrate spring and raise funds for our Philanthropic Educational Organization that awards grants, scholarships, awards, and loans while also supporting Cottey College.



P.E.O. Chapter T recently welcomed Nancy McKenzie into our sisterhood. She joins the sisters of Chapter T in our efforts to support women's education through our Philanthropic Educational Organization projects. Nancy is pictured with the Chapter T officers.



Join the Thursday morning art group 9:00-noon in the card room at the Diamondhead Clubhouse. During a recent session participants received a pastel painting class with Penny Crawford. Bring your supplies, paint with other artists and have fun! (Carol Pratt, Penny, and Trish McCarthy)

**OLD TOWN
Cuz's Oyster Bar
& Grill**

**YOUR LOCAL SEAFOOD
JOINT IN THE HEART OF
BAY ST. LOUIS!**

(228) 467-3707

108 S Beach Blvd. | Bay St Louis, MS 39520

Club news for May 2026

May is here, and with it comes a full lineup of exciting offerings at the Club. Now that the pools are open, we're happy to start delivering again to the main pool. Also, keep an eye out for our cart attendants - they'll be stopping by the pool all day to make things easier for you. We're really looking forward to launching our brand new lunch menu in the Oak Room, which will be available every Thursday and Friday from 11 in the morning till 2 in the afternoon. This is going to be a more upscale lunch experience, perfect for people who want to dine in a peaceful and sophisticated atmosphere. To stay up-to-date on our latest menu offerings and special features, make sure to follow our Facebook page - we'll be posting regular updates and highlights from our new menu, so

you can plan your visit and try out some of our delicious dishes. We've got some great stuff happening in May. Our Friday Night Live Music is back, and to make it even better, we're pairing it with a special steak and shrimp dish from our chef every week. If you're feeling lucky, come check out Bingo Shannon Style on the 1st and 3rd Tuesdays. And on Tuesdays, we're also having a pulled pork quesadilla special that's sure to hit the spot. Meanwhile, Wednesdays are still all about Trivia Night, but now we're adding a delicious Mississippi pot roast dinner to the mix. The weekend is almost here, so why not kick it off with our special Saturday night deal - delicious stuffed boneless flounder smothered in creole cream sauce, served on a bed of angel hair pasta with a side of asparagus. It's

the perfect way to start your weekend. Then, on Sunday, be sure to stop by for Game Night with Zack, a super fun and laid-back way to wrap up the week. You can unwind by

the pool and soak up the sun, get together with friends for some fun, or enjoy a nice meal - the Club at Diamondhead has something for all kinds of people. They really

know how to make everyone's experience special, whether you're looking to relax, have a good time, or just eat some great food. At the Club, you can do it all.

Mother's Day
BRUNCH MENU

Omelet Station
Omelets prepared your way. Choice of premium meats, cheeses, and garden vegetables.

Carving Station
Pineapple Glazed Applewood Smoked Ham
Herb Butter Crusted Fresh Salmon
Oven Roasted Turkey Breast w/ Cranberry Sauce

Seafood Station
Peel and Eat Shrimp, Stuffed Crabs, and Blackened Redfish w/ Creole Sauce

Main Line
Potatoes Au Gratin, Shrimp and Eggplant Casserole, Brown Sugar Grand Marnier Baby Carrots, Zucchini and Squash Casserole, Roasted Fingerling Potatoes in Greek Lemon Seasoning, Green Bean Almodine, Beef Burgundy, Cornbread Dressing

Soups/Salads
Build Your Own Salad, Marinated Summer Salad, Honey Goat Cheese Salad, Antipasto Salad, Potato and Leak Soup, Asparagus and Crab Soup, Assorted Bread Display

Desserts
Variety of Assorted Desserts, Pastries, and Homemade Chocolate Bread Pudding

Seatings at 12:00, 2:00, & 4:00
Call 228-255-2918 ext. 3 for reservations
Adults \$48, Kids 5-10 \$20, 4 & under free

**Parties of 6 or more
Gratuity will be added**

The Club At Diamondhead

MISSISSIPPI POT ROAST NIGHT
Every Wednesday Night

\$20

DINE IN ONLY
NO SUBSTITUTIONS

DONT FORGET ABOUT TRIVIA W/ ZACH AT 6:30



BUSINESS BROWSER

INSURANCE, HOME CARE, MUSIC
LESSONS, SHOPPING, LAWN & GARDEN
BUSINESSES ARE FOUND BELOW

TO ADVERTISE IN THE DIAMONDHEAD
NEWS OR FOR MORE INFORMATION,
PLEASE CALL US TODAY AT 228-467-5474.

SOUTHGROUP
INSURANCE GROUP
GULF COAST

LOWEST INSURANCE
RATES ON THE COAST FOR
HOME, AUTO, BOATS, TOYS,
AND ALL BUSINESS RISKS

CALL OR TEXT US
(228) 466-4498

Angelyn Troutel Zeisinger
info@southgroupgulfcoast.com

We make Saving Easy

IRON MAGNOLIA ANTIQUES
- Visit once & you will be back -

- One-Of-A-Kind Gems & Antiques. You'll be pleasantly shocked.
- Explore 9 Large Rooms full of Vintage Antiques, Pottery, Stained Glass & Elegant Glassware.
- Walk our Lawn & Garden areas for Fountains, Urns, Pots and Concrete Garden Features to set up your Garden.

228.918.6468 | Open Fri., Sat. & Sun. from 12pm to 5pm
6030 Menge Avenue, Pass Christian, MS 39571

Pine Hills
Nursery

Now is the Time to Plant
Fruit • Flowering • Shade Trees

Your Full-Service Garden Center

HOURS:
Mon-Sat
8:30-5:00

www.pinehillsnursery.net
228-255-9645

7434 Cuevas Rd
Pass Christian

Farmer's MARKET
Diamondhead

FRIDAY 9 AM - 1:00 PM
5000 DIAMONDHEAD CIRCLE,
DIAMONDHEAD, MS 39525
EVERY FRIDAY AND 3RD
SUNDAY

• SPORTS

A MESSAGE FROM CHRIS ALTESE, DIRECTOR OF GOLF

We live and play in a great place. Diamondhead has it all. Now is a perfect time to get out and play golf on our two championship golf courses. The golf courses are in beautiful condition thanks to our golf course maintenance team! Many of our guests are saying we are the best in the area.

We're excited to share some great news! MyGolfSpy and GolfPass recently released its list of the Top 5 Public Golf Courses in Mississippi, and The Club at Diamondhead (Pine & Cardinal Courses) made the list! What makes this recognition especially meaningful is that MyGolfSpy and GolfPass rely heavily on reviews from everyday golfers — real players sharing honest feedback about value, playability, and staff friendliness.

Mississippi's Top 5 Public Golf Courses:

Grand Bear

Fallen Oak

Hattiesburg Country Club

The Preserve Golf Club

The Club at Diamondhead – Pine and Cardinal Courses

We know it is tempting to walk on the golf cart paths/trails during this nice weather. All should obey the posted signage at all entry points prohibiting any activity on the golf course, golf cart paths, and golf cart trails other than golf. This is ultimately for your safety and so that those members and guests paying to play golf can do so without concern of hurting someone with an errant golf shot someone who happens to be in the wrong place at the wrong time. With many newcomers to the area and some not so new that do not know golf, it is important that we share this information. On the same note, Diamondhead members have access to several walking trails that were designed specifically for that purpose. Feel free to ask our staff in the Golf Shop or call (228) 255-3910 if you have any questions.

The Ladies' Malahini was held in

April. This is a great event for our lady golfers and to showcase our facilities. We look forward to announcing the results in next month's article.

The Men's Malahini, our premier golf event, is The Club at Diamondhead's Member-Guest and it will be held May 15-17. You may still have time to get your team registered. The Malahini is a major event for The Club at Diamondhead, and it's one of our favorite events of the year.

We hosted the Big Kahuna Golf Challenge on April 3-5. 63 players registered to play in this 2-day, 36-hole, individual stroke play championship. Another great event as we like to say in Diamondhead. We were blessed with strong competition across the board. Congratulations to our flight winners including Big Kahuna Kanaka (Men's) Overall Champion/Shootout Champion Robby Russell, our Big Kahuna Wahine (Ladies') Overall Champion Cassandra Godbold! David Nyein was our "Loose Coconut" for the shootout and he ultimately finished in fourth place. Thank you all for your participation. It was a great time!

Upcoming Events...

5/1 FBC Fundraiser Event

5/2 Jackson State Alumni Golf Classic

5/3 US Kids Gulf Coast Local Tour

5/15-5/17 Malahini Member-Guest

5/21 Diamonds in the Rough Ladies Invitational

5/30 DMGA Play Day

6/5-6/7 Hawaiian Mixed Couples Invitational

Other Important Dates...

7/4-7/5 Magnolia Classic

9/11-9/13 Member-Member

10/2-10/4 Diamondhead CP Four Ball

10/10 Wheel of Misfortune

10/17 Fall Festival Scramble

10/24-10/25 The Shaka Club Championship

11/28 The Gobbler

Golfers...are you doing your part? It's your course too so let's all do our part. Fill your divot and then two more.



EDMOND-FAHEY

FUNERAL HOME

SINCE 1895

- SINCE 1895, -
**THE ANCHOR
HOLDS STRONG**

HERE TO SERVE WHEN YOU NEED US MOST
EDMOND FAHEY FUNERAL HOME
owned & locally owned and operated

The staff at Edmond Fahey Funeral Home take great pride in caring for our families, and have made a commitment to provide you with a beautiful, lasting tribute to your loved one. Everyone's needs are different, and honoring your loved one is our top priority. For that reason, we have a wide range of resources to support you not only today, but in the weeks and months to come.

In addition to offering services ranging from Simple Cremation to Traditional Burial, some resources and specialty services we offer include: Cemetery and Mausoleum Property, Live-Streamed Services, Memorial Slideshow Videos, Online Obituary Tributes (including photos and obituary), Obituary Bookmarks, Grief Support, and More. We invite you to visit the funeral home, or visit the QR Code below, for a free copy of our Funeral Guide book to learn more or to help with preplanning.



📞 **228.467.9031**

110 S. Nacaise | P.O. Box 3030 | Bay St. Louis, MS | www.bslef.com

• CLUBS

Repair your ball mark and then two more. They don't even have to be yours! We look forward to seeing you "PLAY MORE GOLF." Let's all get out and enjoy our beautiful golf courses and practice facilities. As always, let us know how we can help.

DWGAN – SUBMITTED BY BRIGITTE BECKER

Golf and weather go hand in hand for the DWGAN. A record number of our members came out to play our games the past several weeks, with the exception of March 17. We woke up to the expectation of colder weather on St. Patrick's morning, so no more than 13 members arrived to participate in the Luck of the Irish on the front of the Pine. You would have thought it was April 1, as most of us were fooled to what a lovely day it turned out to be. This particular game involves playing with one team, but after play, names are drawn from a St. Paddy's Day hat to determine your actual team and fingers crossed...Irish Luck was bestowed on those players.

First place team scoring a net of 112 were Toni Rossol, Nancy Sisow and Pauline Singer. Second Place with a net of 115 was awarded to Judy Sonntag, Dawn Cason and Kate Burgoyne. Chip-ins were achieved by Nancy Barker on #4 and Dawn Cason on #7.

On March 24, we played the back of the Cardinal with 36 members participating in a 2-Person Best Ball game. Members were divided into 3 Flights. The team of Judy Lakota and Mary Wright took 1 st Place in the First Flight netting a 27. Ann Nutting and Margie Pittman garnered 2 nd place netting 31 and in 3 rd place the 4 remaining teams tied with a net of 32, with Therese Mauterer and Betsy Lyons winning a scorecard playoff. Second Flight players included Janice Murray and

Judith Brannan placing 1 st with



Blackwood Pittman Becker



Gesell Mauterer Pierson

a net of 29; 2 nd Place Brigitte Becker and Monica Jordan netting a 30 and 3 rd place honors went to Ruth Holmes and Anne Payne with a net of 31. Third Flight 1 st Place winners were Sue Hebert and Elizabeth Messer netting a 28; Kate Burgoyne and Dinah Knobloch took 2 nd place

netting 30 and 3 rd place honors went to Kathie Esher and Sharon Gerchow with a 31. Kudos to Kate and Sharon, both of whom had only recently returned after a lengthy absence and we welcomed back Audrey Ramirez. Margie Pittman scored a birdie chip-in on #16 and Nancy Sislow birdied #1. Not to be beaten Audrey birdied #15. Janice Murray had chip in on #13.

The end of the Month for the Niners is always a Scramble or Shamble, scheduled deliberately to rest up for the following week's Trophy Day. On March 31 we played a "net" Shamble and 34 members arrived to play the front of the Pine. The 1 st Place team included Spring Garcia, Lisa Pretzello, MaryAnn Stromeier and Mary Wright netting 111; 2 nd Place honors went to Nancy Barker, Sue He-

bert, Toni Rossol and Pauline Singer with a net of 119 and three teams tied for 3 rd Place with a net score of 123, but the team of Brigitte Becker, Pattie Blackwood and Margie Pittman with a "ghost" won the score card play-off. Kathy Jones, Monica Jordan and Tee Mauterer, as well as Judi Brannan, Mary Mizell, Anne Payne and Judy Sonntag teams were in the running for 3 rd Place. Mary Wright achieved a Birdie on #7 and Kathy Jones (#8) and Kathie Pierson (#9) both achieved chip-ins.

On April 7, 28 of our members participated in a Net Trophy Day on the back of the Cardinal.

Not sure about the other players, but this writer was dreading #12 and #13, especially since 13 was designated as the closest to the pin hole. The field was divided into 4 flights

AN EXCITING CHRISTIAN MINISTRY
WITH CONTEMPORARY WORSHIP!

Jacob's Well

Sunday Worship at 8:45 & 11 am, Live on YouTube at 11
Bible Study (all ages) 10 am
Wednesday 6:30-7:30 pm
Adult, Youth, and Children's Studies and Programs

A PLACE TO GROW YOUR SPIRITUAL LIFE THROUGH WORSHIP,
MISSION OPPORTUNITIES, ACTIVE CHILDREN AND YOUTH GROUPS,
AND HIGH-QUALITY ADULT BIBLE STUDIES

LOCATION: 29554 VIC FAYE RD., 228-255-2555
JUST EAST AND ACROSS FROM THE BROOKLYN CENTER AND
PRESTIGE FITNESS CENTER AT THE BACK OF DIAMONDHEAD

DR. BILL WARREN, PASTOR

A MULTI-GENERATIONAL, FAMILY-FOCUSED,
MINISTRY-ORIENTED, SOUTHERN BAPTIST CHURCH
SERVING HANCOCK AND HARRISON COUNTIES



Tazuin Garcia Pierson

ners included Judith Sonntag, Margaret Sherwood, Nancy Sislow, Pauline Singer and Sylvia Corban.

And ending this month's article, I'll leave you with this thought....in golf, you get a fresh start every 18 holes, yet in marriage you get reminded of a mistake you made in 1998. Ciao, until next month.

DWGA BY COLLEEN JONES

Spring has arrived and we were able to play four weeks in March. March 5th was our Trophy Day that we played on the Pine Course. First Flight Gross winner was Marta Wald and the Net winner was Judy Sonntag.

Second Flight Gross winner was Amy Swint and the Net winner was Judy Tazuin. Closest to the pin winners were Tiffany Webb on hole #2 and hole #6, Judy Sonntag on hole #15. Birdies were had by Amy Swint and Liz Bell. Liz Bell had a Chip-In.

March 12th we had our Scotch Doubles which is a female and male partners play alternate shot for 18 holes. The Champion team was Margie and Ronnie James. First Flight winners were Marta Wald and Word Johnston, second place was Amy Swint and Frank Morrow, third place was Bet Bowen and Tom Begley. Second Flight winners were Colleen and Jerry Jones, second place was Mary Wright and Fred Wiles, third place was Terri and Tom Woolbright. Third

Flight winners were Ruth and Randy Holmes, second place was Terrie Garrett and Jim Shoemaker, third place was Brigitte Becker and Paul Yardbrough.

March 19th we played Luck of the Irish on the Pine Course. This was a team game but you did not know who was on your until after you played. The winning team was Judy Sonntag, Terri Woolbright and Liz Bell. Second place team was Bet Bowen, Amy Swint and Cassandra Godbold. Third place team was Pat Ellis, Denise Bergeron and Judy Sonntag. Closest to the pin winners were Liz Bell on hole #2 and hole #15, Judy Sonntag on hole #6 and Cassandra Godbold on hole #13. Birdies were had by Terri Woolbright, Judy Sonntag, Bet

and garnering 1 st Place in the First Flight was Marilyn Galus netting a 31; Therese Mauterer took second place with net score of 33 and Judy Tazuin came in 3 rd with a net of 35. In Flight 2, Mary-Ann

Stromeyer achieved 1 st place netting a 31; Margaret Sherwood took 2 nd place with a net of 32 and Anne Payne was 3 rd netting 35. In our 3 rd Flight, 3 players tied with a net of 41, resulting in a scorecard playoff for first, second and third place and those honors in the order of their win included Pauline Singer, Dinah Knobloch and Ruthie O'Neill. The 4 th Flight also had a tie for first place with both players netting a 36, but Sue Hebert won the playoff achieving 1 st Place and

Elizabeth (Spring) Garcia took 2 nd place. Third place went to Judith Sonntag with a net score of 37. And remember the dreaded Hole #13 for closest to the pin, only one player took home the money

and that was Anne Payne whose ball dropped 38'6" from the hole. Low Putt win-

THE COAST CHORALE PRESENTS
AN AMERICAN JOURNEY
 A PATRIOTIC CONCERT
 CONDUCTOR-DAN MCELDRATH
 ACCOMPANIST - ROBIN YOUNG

PERFORMANCE SCHEDULE

FRIDAY, MAY 15TH - 6:30 PM
 MOST HOLY TRINITY CATHOLIC CHURCH
 9062 KILN DELISLE RD
 PASS CHRISTIAN

SATURDAY MAY 16TH - 6:30 PM
 LUTHERAN CHURCH OF THE PINES
 309 HIGHWAY 90
 WAVELAND, MS.

WEDNESDAY MAY 20TH, 7:00 PM
 FEATURING THE U.S. ARMY BAND
 PASS CHRISTIAN YACHT CLUB
 120 S MARKET STREET
 PASS CHRISTIAN, MS

FRIDAY MAY 22ND 6:30PM
 DIAMONDHEAD COMMUNITY CHURCH
 5301 DIAMONDHEAD CIRCLE
 DIAMONDHEAD, MS

ADMISSION IS FREE. THE COAST CHORALE IS A NON
 PROFIT AND ALL DONATIONS ARE APPRECIATED



MITCHELL (Mike)
Monsour, Jr.
 ATTORNEY AT LAW

- WILLS
- LOUISIANA SUCCESSIONS
- PROPERTY RIGHTS
- POWER OF ATTORNEYS
- MISSISSIPPI ESTATES
- HOMEOWNERS ASSOCIATION

Call 601-672-4188 • Licensed in MS, LA & NC
 mitchell.monsour@gmail.com

• SPORTS

Bowen had two and Liz Bell had two. Chip-ins were had by Liz Bell and Bet Bowen.

March 26th we played Cha,Cha,Cha on the Pine Course. This is a team game. First Flight winning team was Liz Bell, Bet Bowen and Mary Wright. Second Flight winning team was Judy Sonntag, Joanne Fried and Ruth Holmes. Closest to the pin winners were Terri Woolbright on hole #2 and hole #13, Amy Swint on hole #6. Birdies were had by Amy Swint, Terry Woolbright, Liz Bell, Bet Bowen and Judy Sonntag had two. Chip-Ins were had by Judy Sonntag and Bet Bowen.



**Scotch Double Champions
Margie and Ronnie James**

The Club At Diamondhead

Sips & Giggles

Pulled Pork Quesadilla served with pico, guacamole, sour cream, and salsa

EVERY TUESDAY
5-9 pm

\$15

The Club At Diamondhead

Saturday Night Chef Special

\$35

DINE IN ONLY - NO SUBSTITUTIONS
5-00-9-00 PM

STUFFED BONELESS FLOUNDER FILETS TOPPED WITH A CREOLE CREAM SAUCE AND SERVED WITH ANGEL HAIR PASTA AND ASPARAGUS

*Reservations are recommended for the Oak Room
Call 228-255-2918 ext 122*



DIAMONDHEAD BOAT & RV STORAGE

NOW OPEN

Reserve your space today!



BOAT

We offer:

- 24/7 control gate access
- Video surveillance
- Wash down stations
- Power hook-ups



RV

31249 Noma Drive, Diamondhead, MS 39525

(228)-832-8302

<https://www.tellusselfstorage.com>



VEHICLE

SCAN TO RESERVE NOW!



Diamondhead News

7610 Country Club Cir., Diamondhead, MS 39525

PRSR STD
U.S. POSTAGE
PAID
BATON ROUGE, LA
PERMIT NO. 88



THE HANCOCK HEALTH FOUNDATION
PRESENTS THE 2ND ANNUAL

GREAT BALLS of *Fire*

BOWLING TOURNAMENT

4 PERSON TEAMS | FAMILY FRIENDLY



SATURDAY, MAY 9
4PM-6PM



PARK TEN LANES

4393 Park Ten Dr., Diamondhead, MS



Roll for a Reason | HHFMS.ORG



SCAN TO SPONSOR
OR REGISTER A TEAM
228.467.9048

ALL PROCEEDS BENEFIT THE
HANCOCK HEALTH FOUNDATION
HELPING IMPROVE HEALTHCARE
ACROSS HANCOCK COUNTY.