

Diamondhead News

APRIL 2025

www.diamondheadms.org

VOL. 43, NO. 3

FROM THE DESK OF THE PRESIDENT

PRESIDENT'S REPORT

BY NANCY SISLOW,
BOARD PRESIDENT

Your POA Board has been working with the General Manage and their committees to manage the challenges presented by the reduction in income that results from 40% of members not paying dues. In addition to that reduction in income the POA is faced with, despite every effort to find the best rates, an increase in insurance to \$580,000, an increase from \$252,000. Both those facts come at a time when we are faced with a \$280,000 tax bill resulting from a change made by the Hancock County Tax Assessor. We are trying to find ways to minimize those impacts to achieve solvency. Cost Reductions are being implemented on three fronts. These include administration, bar and restaurant operations and amenities. Our goal is to reduce operating expenses by \$700,000 per year

Changes to amenities include the following:

Close the Holiday Pool. This pool gets 7% of the overall pool volume and will reduce costs by \$50,000 per year

Lease the Tennis Club. Membership is down to 20 members. Matt Garmin the Tennis Pro is confident that he can turn this around by having more flexibility through independent management. Savings of \$50,000 per year.

Closing the Community Center at the end of May.

We have transitioned all regular meeting groups to The Club

Savings will be around \$100,000 per year

Change is not always easy, but in the end, it is inevitable, and the Board will work to assure we seek solutions that result in having our community retain its unique attributes.

As we make these changes, it helps to recall that making Diamondhead a city was

also a big change. That change was in 2012 and the reality of being able to have an active police force and the ability to seek grants to enhance the city began to be recognized. The Ordinances that had to be developed for the city were modeled after the covenants so that the architectural aspects of Diamondhead were maintained. Several years later the POA membership voted to transfer the responsibility for the streets and drainage to the city. Other changes were planned but did not come to fruition. We now are faced with decisions as to how to maintain our wonderful community. And it will be different but better than "the old days."

I, and all the Members of the Board, thank you for the opportunity to serve the Diamondhead Property Owners Association and its great amenities.

Easter Buffet!
APRIL 20TH, 2025

Omelet Bar

Carving Station

- BBQ Ribs
- Pesto Crusted Salmon
- Herb Crusted Tenderloin

Main Line

- Flash Fried Brussels Sprouts
- Roasted Fingerling Potatoes
- Boursin Macaroni & Cheese
- Squash Casserole
- Grilled Asparagus w/Blue Cheese Butter
- Crispy Fried Chicken
- Honey Glazed Ham
- Southern Style Pot Roast

Seafood Station

- Fried Catfish
- Gumbo YaYa
- Stuffed Crabs
- Fried Shrimp
- Boiled Shrimp

Salads

- Deviled Eggs
- Strawberry Goat Cheese Salad w/ Berry Vinaigrette
- Garden Pasta Salad
- Assorted Breads

Desserts

- Lemon Blueberry Bread
- Pudding
- Assorted Pies
- Assorted Cakes

SEATINGS AT 10:30, 12:00, & 1:30.
CALL 228-255-2918 EXT. 3 FOR RESERVATIONS.
Non-Member • \$40 | Member • \$34 (Tax & Gratuity Not Included)
Non-Member Kids 5-12 • \$22 | Member • \$18.70 | 4 & Under • Free

THE CLUB
at
DIAMONDHEAD

Diamondhead News

The Diamondhead News is the ONLY official voice of the Diamondhead Country Club and Property Owners Association, Inc. As such, it is solely responsible for its content. The Diamondhead Property Owners Association, Inc. will maintain sole control of the editorial content. A monthly publication by the Diamondhead P.O.A.; offices are located at 7610 Country Club Circle, Diamondhead, MS 39525. ALL SUBMISSION REQUESTS MUST BE SUBMITTED BY THE 15TH OF EVERY MONTH.

EMAIL: DHNEWS@DHPOA.ORG

TELEPHONE: 228-255-1900

EDITOR: CANDICE BOONE

Subscription info: DHPOA Membership 255-1900

The Sea Coast Echo will be responsible for production, printing, advertising and distribution (by mail) of The Diamondhead News. For advertising, call 228-467-5473.

POA BOARD OF DIRECTORS

Nancy Sislow (president) | 847-271-7474
nsislow@dhpoa.org

Ernest Lee (director) | 832-465-9072
elee@dhpoa.org

Trey Giarusso (vice president) | 504-460-1717
tgjarusso@dhpoa.org

Bob Pineau (director) | 734-347-2897
bpineau@dhpoa.org

Bill Blackwood (treasurer) | 601-818-1666
wblackwood@dhpoa.org

Stuart Stromeyer (director) | 713-851-7084
sstromeyer@dhpoa.org

Meg Damiens (secretary) | 228-213-7967
mdamiens@dhpoa.org

Michael Tubbs (director) | 757-817-5917
mtubbs@dhpoa.org

Stuart Nutting (director) | 228-363-2549

Gary Becker (ex officio) | 813-215-2761
gbecker@dhpoa.org

Ronnie LaFontaine (director) | 228-671-9169
rlafontaine@dhpoa.org

ASSOCIATION STAFF

Rick Goldstein General Manager
Darrion McInnis Controller
Candice Boone Managing Editor
Chris Altese Director of Golf
Hoppy Smith Director of Player Development
Dan Hamman Golf Superintendent
Adam Humphrey Facilities Superintendent
Matt Garman Tennis Professional
Dianne Simonson Harbor Master
Nancy Perkins Sales & Marketing
Andrea Jones Legal/HR Administrator

EXTENSION DIRECTORY

POA Office 255-1900 or 1-800-321-3840
Fax 255-4296
Airport 255-0502
Facilities Maintenance 255-3343
Country Club 255-2918
19th Hole 255-5005
Fire District/Emergency 911/Business 255-1314
Golf Pro Shop 255-3910
Golf Tee Times 255-5517 or 1-800-346-8741
Marina 228-216-9059
Personnel 255-1900 ex-123
Diamondhead Water & Sewer District 255-5813
Tennis World 255-5030
Waste Collection 832-3144

DIAMONDHEAD COUNTRY CLUB & PROPERTY OWNERS ASSOCIATION, INC. Board of Directors Financial Summary, February 28, 2025

Month	Revenue	Expense	Net Income (Net Loss)	Budget	Budget Variance	Dues Allocation
Membership Dues	257,372	-	257,372	263,062	(5,690)	-
Country Club	286,824	272,707	14,117	(19,352)	33,469	-
Community Center	2,023	9,061	(7,038)	(5,025)	(2,013)	7,038
Tennis	4,404	13,721	(9,317)	(6,870)	(2,447)	9,317
Golf Shop	201,660	59,348	142,312	132,028	10,284	-
Golf Course Maint	-	143,736	(143,736)	(158,540)	14,804	-
Golf Academy	4,955	11,536	(6,581)	(6,071)	(511)	6,581
Grounds Maint	-	28,129	(28,129)	(28,097)	(32)	28,129
Facilities Maint	-	26,571	(26,571)	(32,802)	6,231	26,571
Marketing	-	16,114	(16,114)	(9,577)	(6,537)	16,114
Pier House	5,625	4,007	1,618	1,148	470	-
Airport	1,200	4,343	(3,143)	(234)	(2,909)	3,143
Marina	6,972	11,890	(4,917)	(4,282)	(635)	4,917
Recreation	100	17,585	(17,485)	(18,209)	724	17,485
Administration	11,364	141,399	(130,034)	(132,018)	1,984	130,034
Totals	782,498	760,144	22,354	(24,839)	47,192	249,329

Year-to-Date	Revenue	Expense	Net Income (Net Loss)	Budget	Budget Variance	Dues Allocation
Membership Dues	515,174	-	515,174	526,124	(10,950)	-
Country Club	511,038	571,821	(60,783)	(46,825)	(13,958)	60,783
Community Center	2,973	18,945	(15,972)	(17,050)	1,078	15,972
Tennis	8,144	27,554	(19,410)	(14,215)	(5,195)	19,410
Golf Shop	336,547	120,023	216,525	248,562	(32,037)	-
Golf Course Maint	-	291,826	(291,826)	(315,692)	23,866	-
Golf Academy	6,610	19,299	(12,689)	(12,474)	(215)	12,689
Grounds Maint	-	54,861	(54,861)	(56,194)	1,333	54,861
Facilities Maint	-	53,911	(53,911)	(67,104)	13,194	53,911
Marketing	-	32,676	(32,676)	(29,104)	(3,572)	32,676
Pier House	11,250	38,408	(27,158)	(28,684)	1,526	27,158
Airport	2,400	5,999	(3,599)	(468)	(3,131)	3,599
Marina	14,893	25,583	(10,690)	(7,946)	(2,744)	10,690
Recreation	100	33,997	(33,897)	(32,168)	(1,729)	33,897
Administration	24,160	319,689	(295,529)	(268,525)	(27,004)	295,529
Totals	1,433,289	1,614,591	(181,302)	(121,764)	(59,538)	621,175

Capital Projects	Expensed	Approved	Variance
Grounds	-	-	-
Country Club	-	-	-
Golf	14,202	14,202	-
Tennis	-	-	-
Recreation	-	-	-
Facilities/Maintenance	-	-	-
Administration	-	-	-
Marina	-	-	-
Airport	-	-	-
Contingency	-	-	-
Totals	14,202	14,202	-

The POA Board meets every month on the 3rd Monday at City Hall. All meetings begin at 6:00 pm. Every meeting is live-streamed and can be found on Youtube.

• BUSINESS

MINUTES OF THE MEETING OF THE BOARD OF DIRECTORS THE CLUB AT DIAMONDHEAD AND

PROPERTY OWNER'S ASSOCIATION, INC. FEBRUARY 17, 2025

A meeting of the Board was

• See MINUTES
Page 3



Diamondhead News

JANET WOOLSEY
MARKETING REPRESENTATIVE

601.850.3939

EMAIL: JANET@SEACOASTTECHO.COM



• COMMUNITY

Diamondhead Aviation: Distractions

BY PAUL GILBERT

Yesterday, as I was scrolling through social media posts, I saw a story about a crash in Pennsylvania. There have been quite a few events

making headlines in the past few months. But this was troubling because it was completely preventable. The plane's door popped open right after takeoff and the pilot reported returning for

landing so they could secure the door. For some reason, that didn't happen. They crashed into an apartment parking lot.

The first time a door popped open on me was a bit

of a surprise, but my flight instructor smiled and said, 'now what are you going to do?'

He had unlatched the door as part of my training.

A V I A T E - N A V I -

GATE-COMMUNICATE

Every instructor should introduce reasonable dis-

• See AVIATION

Page 4

• BUSINESS

Continued from Page 2

held at 5000 Diamondhead Circle, Diamondhead Mississippi. President Sislow chaired the meeting and called it to order at 6:00 p.m.

Present were President Sislow, Vice President Giarrusso, Treasurer Blackwood, Secretary Damiens, Director LaFontaine, Director Pineau, Director Nutting, Director Stromeyer, Director Lee and Director Tubbs and Ex-Officio Becker. Also present were GM Goldstein, Controller McInnis, and Legal Counsel Jones

APPROVAL OF MINUTES – Minutes of the meeting of January 20, 2025 were approved by e-mail vote completed January 31, 2025.

APPROVAL/AMEND MEETING AGENDA – Motion to approve meeting agenda by Director Nutting and seconded by Treasurer Blackwood. The motion passed.

PRESIDENT'S REPORT – President Sislow provided her report.

COMMITTEE REPORTS – Airport/Marina Committee- has not had a full committee meeting, but the chairman met with the new GM. Discussions regarding investment possibilities. Will be meeting with another investor, who is interested in the airport, tennis world and the pickleball courts. All is, preliminary confidential and they're ongoing. These things are the natural consequence of covenants expiring. There

is a rise in a need in doing something different so we can prosper and thrive going forward. Recreation Committee- Working primarily what is on the agenda with the pickleball courts.. Administration/Legal Committee- Met with the new GM, He was on his third week and hear about his findings so far. He has mentioned food waste found in the kitchen, and in the garbage found with oversized portions of food served. Talked about the filth in the kitchen from the floors to the grease build up. With the bar, overfilled unmeasured alcohol served everyday. Talked about payroll, salaries vs hourly, salaries plus tips vs hourly as well. Spoke in regards to the restrooms, four little or no maintenance. Plans regarding chatted about the Community Center, Rec Center, Airport/Marina, the north pool and baseball fields and potential suitors for those amenities. GM Goldstein has a number of actions to underway to address these things.. Have received audited financial statements for 2021 and 2022. We are behind getting financial statements. Lost \$1,268,000 in '21, and \$682,000 in '22. While we only have interim statements, we continue to lose money in the POA. Diamondhead dues have gone down \$550,000 from 2021-2024. Sum of 800 people not paying dues. Costs are up. Insurance is now \$538,000 and we are faced with property tax. The POA cannot continue to operate the same way it has with reduced revenue and

increased costs. House/Club Committee- Looking at expenses over the past 12 months, it has been recommended that we adjust the hours of operation. Beginning March 3rd, The Club will open 10:00am Monday thru Thursday. Breakfast will be served Friday, Saturday and Sunday only. And will make special accommodations for golf tournaments and special events. The bathrooms will have access from the outside of the building before 10 AM. Facilities/Safety Committee- Nothing to report. Golf/Grounds Committee- Number 11 pine with the drainage work with the city is on going, should be done by end of March. Several groups coming to town to play. And other groups adding additional revenue for golf and the restaurant as well. Will be having night golf event 29th of March.

GENERAL MANAGER'S REPORT – GM Goldstein gave a report including financial data

POA MEMBERS COMMENTS ON AGENDA ITEMS. John Gallus, Barbara Gibbons, Katherine Lewis, Lisa Pretzellospoke to Motion 2025-26.

REGULAR AGENDA –

2025-06- Motion to approve the reconfiguration of the Pickleball/tennis courts located at the club to six Pickleball courts at the cost not to exceed \$40,000 made by Director Tubbs and seconded by Director Nutting. Motion was made by Director Pineau and seconded by Vice President Giarrusso to table Motion 2025-

26. Those in favor President Sislow, Vice President Giarrusso, Secretary Damiens, Treasurer Blackwood, Director Pineau, Director LaFontaine, Director Stromeyer, Director Lee and Ex-Officio Becker. Those opposed Director Tubbs and Director Nutting. The motion passed.

2025-07- Motion to purchase Grooming heads for greens mower reels for growing season (Verti-cut blades) made by Vice President Giarrusso and seconded by Director Lee. Those in favor, President Sislow, Vice President Giarrusso, Secretary Damiens, Director Lee, Director Nutting, Director LaFontaine and Ex-Officio Becker. Opposed, Director Pineau, Director Tubbs and Director Stromeyer. Treasure Blackwood Abstained. The motion passed.

POA MEMBERS COMMENTS ON NON-AGENDA ITEMS – Don Rhodes, President of The Oaks POA spoke regarding his community.

NEXT MEETING – The next scheduled meeting will be on Monday, March 17, 2025, at 6:00 P.M. at the Diamondhead City Hall Chambers.

ADJOURN- A motion was made by Director Stromeyer and seconded by Treasurer Blackwood to adjourn. The meeting adjourned at 6:59pm.

Respectfully submitted,

Meg Damiens

POA Board Secretary

Approved

2/25/25

• COMMUNITY

A Café Worth Remembering at East Hancock Library

BY LEAH HOLMES

Hello again, friends and readers! Spring is definitely in the air, isn't it? Warming temperatures, the windy days of March, and our first azalea blooms all signal that, like butterflies, we, too, are ready to emerge from our cozy winter "cocoons" to resume our active lives more freely. With this idea in mind, I'm excited to share just the right place for caregivers and their loved ones facing the challenges of memory loss: it is the Memory Café, happening at the East Hancock Library at 10:00 am on the last Friday of every month!

Maybe you've seen flyers or heard it mentioned here

and there but weren't entirely sure "what this Memory Café idea is all about." Please allow me to explain.

The Memory Café began with discussions between the Diamondhead Senior Village (whose goal is "to enable senior residents in Diamondhead to age in place as well as possible, for as long as possible, with dignity, joy and respect") and the Southern Mississippi Planning and Development District (SMPDD) – Area Agency on Aging, to make Diamondhead the first "Dementia-Friendly" City in the state of Mississippi (a designation that has been achieved but also an initiative that is ongoing). Dementia Friendly America

(DFA) is a national project aimed at creating supportive communities which "foster quality of life for people living with dementia and their care partners by decreasing stigma, increasing opportunity for meaningful social interaction, and offering support in addressing the changing needs of people living with dementia." Together with the Hancock County Library System and under the direction of the Mississippi Department of Health, the Diamondhead Dementia Friendly Advisory Council develops programs—like the Memory Café—and resources which support our Dementia Friendly community.

Since launching in May of

2024, the Memory Café has served as a safe and comfortable space where caregivers and their loved ones can socialize, hear oldies music, complete a seasonal craft, and enjoy other activities. Importantly, facilitators also engage participants in discussions designed to trigger their fondest memories. For example, this past December, participants in the Café toured the East Hancock holiday trees on display for our annual library system Tree Celebration. They then offered recollections of their own favorite past Christmas or New Years gatherings by recalling a particular tree, a homemade stocking, a special visitor, or a comi-

cal disaster! Recalling such long-term memories, and the sense of connection and personal identity which stem from this process, are what make the Memory Café such a heartwarming and unique experience for both caregivers and care recipients.

One of the current aims of the Memory Café is to begin partnering with local sponsors as a way of bringing awareness to the Diamondhead Dementia Friendly initiative, its goals, and missions. In this way, the Café shares with the community the opportunity to engage

• See CAFE
Page 12

• AVIATION

Continued from Page 3

tractions from time to time. Nothing should distract a pilot from their primary task of maintaining aircraft control. Throughout our flying careers, we'll deal with distractions. ATC communications, passenger chatter, changing weather, aircraft system malfunctions, required inputs to avionics and so many other distractions may happen on every flight (hopefully, not too often for the malfunctions).

In many aircraft, closing a door in flight is nearly impossible as the slipstream air pulls the door away from the fuselage. The door will hang open in the slipstream without causing a hazardous condition. Leave the door alone and fly the plane.

Be Prepared and Fly the Plane

What would you do if your air-

speed indicator stopped working? This and other avionics malfunctions should be practiced so you'll be better equipped to handle the situation. With the airspeed indicator covered, try some basic maneuvers such as climbs, descents, turns and landings. This is better done under the supervision of an instructor.

There is not one instrument failure that should endanger the safety of the flight. Practice flying with each instrument disabled or obscured so you can deal with the loss of any piece of equipment.

How about communications failure? Do you remember the light gun signals a tower may use to communicate with aircraft? How about which transponder code is used? Some people keep a list of these items mounted in the aircraft for quick reference. Squawk 7600, fly the plane and expect light gun signals. Landing at a towered airport may be the safer

option since the tower will be able to communicate with and clear other traffic.

What would you do if the alternator stopped working? What are the indications you'll see? Some aircraft have a light to alert pilots to a charging system failure while others will only show a discharge on the ammeter. Quick recognition of this failure is important.

The plane will run fine with the master switch turned off as the magnetos power the spark plugs. If you're in instrument conditions, find VFR conditions if possible. Newer planes with digital displays pose a bit more of a time crunch, because their batteries are typically rated for about thirty minutes of use. Learn which components cause the greatest draw on the battery in this situation. The transponder is one high draw item that isn't critical to safe operation as are position lights and strobe.

(Remember, the regulations say you may deviate from any regulation to the extent required to meet an emergency, so this isn't the time to worry about which equipment is legally required for VFR or IFR flight). Do what you can to conserve battery power and find a suitable airport to land and address the problem.

Check out this link for a great article on this subject: <https://www.globalair.com/articles/how-to-handle-an-alternator-failure-in-flight?id=4706>

As I'm always stressing, safe operations are the product of good planning and training. Don't let anything keep you from maintaining aircraft control. Fly the plane. Get the plane on the ground and address the problem after shutdown and aircraft secured.

Wishing everyone many pleasurable and SAFE hours of flight.



COLDWELL BANKER

ALFONSO
REALTY, INC.Diamondhead Office
4300 Gex Rd | 228-255-3550Anita Sanderford
228-216-2035Audrey Spraberry,
Assitant Manager
228-547-8023Betsy Nolan
228-216-8781Brent Allison
228-216-1269Carmen Ferro
228-342-1184Carol Shippey
228-332-0600Gina Bradley
985-290-0280Gina Grotkowski
228-216-3880Jackie Miller,
Managing Broker
504-250-0469Jessica Russell
228-342-1107John Hall
228-669-6111Lynn Grego
228-223-9903Mary Lobos
225-268-0501Marsha Buras
985-285-4690Nell Frisbie
228-493-2024Patrick Nolan
228-547-8657Sue Layel
228-224-2559Wendy Englande
504-913-4940Wes Sanderford
228-342-5766Whitney Herrmann
504-256-4969

COLDWELL BANKER

ALFONSO
REALTY, INC.

Office: 228-287-1000



Sue Sunderland, REALTOR®

228-324-2555 Direct

suesunderland61@gmail.com



- Custom built by Kevin Taylor/Plum Homes
- 18.9 Acres
- Stunning office/library
- Primary suite on 1st level
- Multiple living areas
- Two stairways - one to bedrooms, one to 500 SF bonus room
- Full house generator
- 1,920 SF barn / workshop with bath
- 1,318 SF apartment with elevator over barn

19910 Red Oak Rd | Saucier
4 Bed | 4 Bath | 5,264 sqft | \$1,200,000

Beautiful Large Country Estate



COLDWELL BANKER

ALFONSO
REALTY, INC.5 star rating on Internet
Real Estate Sites

Betsy Montjoy

D: 228-547-2856

O: 228-467-0244

612 Waveland Ave | Waveland
0.28 Acre Lot | \$249,000

Move-in-ready home on corner lot, 3-bedroom, 2-bath, open floor plan, wood floors throughout, two-car garage with ample storage, partially fenced yard for outdoor enjoyment, pets or entertaining.

305 Third St | Bay Saint Louis
4 Bed | 2.5 Bath | 1700 sqft | \$709,000

Renovated historic home in Old Town, Bay St. Louis, featuring details like pine flooring and beadboard accents. Modern kitchen, master bedroom with ensuite, screened porch, fenced backyard and flexible layout. Conveniently located near beach, downtown, marina, and golf course.

845 E Scenic Dr | Pass Christian
3 Bed | 3 Bath | 2500 sqft | \$5,499,000

An exquisite 8.5-acre lot on Scenic Dr. overlooking the Gulf of Mexico. Property includes six parcels extending from Beach Blvd to Second Street. This valuable land is open for new construction and multiple-home development. It's completely fenced and gated at the front and rear entrances. The expansive grounds still have two 1940s cottages that were combined to create a saddlebag cottage with the new addition of a master wing. Use this land as an investment opportunity to build multiple homes or for your private sanctuary.

206 Idlewood Dr | Waveland
3 Bed | 2 Bath | 2198 sqft | \$225,000

Beautiful brick home situated in an established neighborhood, conveniently located to shopping and entertainment. This home features ceramic tile throughout, a bonus room, a sun room, freshly painted throughout and new light fixtures.



Diane Brown

D: 615-584-9444

O: 228-467-0244

6533 Shawnee St | Kiln
2 Bed | 1 Bath | 1100 sqft | \$147,999

Looking to live in Jourdan River Shores? Cute house on high ground w/ access to community swimming pool, tennis court, and boat launch. This house would make a great starter/retirement home or investment. The interior was freshly painted and with plenty of natural lighting this cozy house will be bright and cheery.



201 Kona Villa | Diamondhead

2 Bed | 2 Bath | 940 sqft | \$154,333

Upstairs unit with balcony & great view of pool. Move-in-ready. Nice kitchen area with lots of cabinets and a must have washer and dryer. Association fees include: Insurance; Maintenance Grounds; Pest Control. Great community with golf course, tennis, walking trails, kayak launches, marina, airport, shopping, dining and MORE!

Testimonials

"We cannot say enough about the level of customer service Diane provided us. She guided us through the process and answered every question we had throughout the process. She made us feel welcome to our new home in MS. Thank you for everything Diane!"

~ Derek & Amanda A.

4 Castle St | Pass Christian
2 Bed | 2 Bath | 1827 sqft | \$345,000

Relax in your move in ready elevated home. Large bedrooms, additional living space opening to back porch & ready for an outdoor kitchen. Enjoy the outdoor living space down stairs set up with a grill station.

St. Patrick's
Day790 Ewa Place | Diamondhead
3 Bed | 2 Bath | 2,118 sqft | \$279,000

Adorable move-in-ready home. Granite counter tops, kitchen w/ breakfast area, "a cook's delight", cabinets galore, stainless steel fridge and cook-top stove. Dining room & sitting room. Family room w/ wood-burning brick fireplace, ceiling fans. 2 bedrooms w/ built in desk & book shelves. 3rd bedroom has beautiful walk-in-closet, double vanity, ceramic tile walk-in-shower. On a corner lot with double garage. A "one of a kind" for sure.

COLDWELL BANKER | ALFONSO
REALTY, INC.

4300 Gex Rd. Diamondhead

O: (228) 255-3550

D: (228) 255-3550



Carmen Ferro

carmenferro614@gmail.com

Happy
St. Patrick's
Day



COLDWELL BANKER

ALFONSO
REALTY, INC.5 star rating on Internet
Real Estate Sites

Betsy Montjoy

D: 228-547-2856

O: 228-467-0244

612 Waveland Ave | Waveland
0.28 Acre Lot | \$249,000

Move-in-ready home on corner lot, 3-bedroom, 2-bath, open floor plan, wood floors throughout, two-car garage with ample storage, partially fenced yard for outdoor enjoyment, pets or entertaining.

305 Third St | Bay Saint Louis
4 Bed | 2.5 Bath | 1700 sqft | \$709,000

Renovated historic home in Old Town, Bay St. Louis, featuring details like pine flooring and beadboard accents. Modern kitchen, master bedroom with ensuite, screened porch, fenced backyard and flexible layout. Conveniently located near beach, downtown, marina, and golf course.

845 E Scenic Dr | Pass Christian
3 Bed | 3 Bath | 2500 sqft | \$5,499,000

An exquisite 8.5-acre lot on Scenic Dr. overlooking the Gulf of Mexico. Property includes six parcels extending from Beach Blvd to Second Street. This valuable land is open for new construction and multiple-home development. It's completely fenced and gated at the front and rear entrances. The expansive grounds still have two 1940s cottages that were combined to create a saddlebag cottage with the new addition of a master wing. Use this land as an investment opportunity to build multiple homes or for your private sanctuary.

206 Idlewood Dr | Waveland
3 Bed | 2 Bath | 2198 sqft | \$225,000

Beautiful brick home situated in an established neighborhood, conveniently located to shopping and entertainment. This home features ceramic tile throughout, a bonus room, a sun room, freshly painted throughout and new light fixtures.



Diane Brown

D: 615-584-9444

O: 228-467-0244

6533 Shawnee St | Kiln
2 Bed | 1 Bath | 1100 sqft | \$147,999

Looking to live in Jourdan River Shores? Cute house on high ground w/ access to community swimming pool, tennis court, and boat launch. This house would make a great starter/retirement home or investment. The interior was freshly painted and with plenty of natural lighting this cozy house will be bright and cheery.

4 Castle St | Pass Christian
2 Bed | 2 Bath | 1827 sqft | \$345,000

Relax in your move in ready elevated home. Large bedrooms, additional living space opening to back porch & ready for an outdoor kitchen. Enjoy the outdoor living space down stairs set up with a grill station.



201 Kona Villa | Diamondhead

2 Bed | 2 Bath | 940 sqft | \$154,333

Upstairs unit with balcony & great view of pool. Move-in-ready. Nice kitchen area with lots of cabinets and a must have washer and dryer. Association fees include: Insurance; Maintenance Grounds; Pest Control. Great community with golf course, tennis, walking trails, kayak launches, marina, airport, shopping, dining and MORE!

St. Patrick's
Day790 Ewa Place | Diamondhead
3 Bed | 2 Bath | 2,118 sqft | \$279,000

Adorable move-in-ready home. Granite counter tops, kitchen w/ breakfast area, "a cook's delight", cabinets galore, stainless steel fridge and cook-top stove. Dining room & sitting room. Family room w/ wood-burning brick fireplace, ceiling fans. 2 bedrooms w/ built in desk & book shelves. 3rd bedroom has beautiful walk-in-closet, double vanity, ceramic tile walk-in-shower. On a corner lot with double garage. A "one of a kind" for sure.

Carmen Ferro
carmenferro614@gmail.com

Testimonials

"We cannot say enough about the level of customer service Diane provided us. She guided us through the process and answered every question we had throughout the process. She made us feel welcome to our new home in MS. Thank you for everything Diane!"

~ Derek & Amanda A.

Happy
St. Patrick's
Day

COLDWELL BANKER

ALFONSO
REALTY, INC.

4300 Gex Rd. Diamondhead

O: (228) 255-3550

D: (228) 255-3550



COLDWELL BANKER
ALFONSO
REALTY, INC.



**5 star rating on Internet
Real Estate Sites**



Brent Allison
D: 228-216-1269
O: 228-255-3550



8025 Ridgewood Dr | Kiln
4 bed | 2.5 bath
2165 sqft | \$429,900

Newly constructed home nestled on spacious 2-acre lot in Kiln. Modern French Acadian design with an open & split floor plan and so much more.



25541 Broadridge Dr | Picayune
4 bed | 2 bath
2339 sqft | \$275,000

Situated on 7 private acres (only about 2 acres cleared). The main level offers an open floor plan, large living room, spacious kitchen, lots of decks, workshop/garage, & so much more.

CALL OR STOP BY

Any of our 6 locations across the MS Gulf Coast

1. 4300 Gex Rd, Diamondhead | (228) 255-3550
2. 1188 US-90, Bay St Louis | (228) 467-0244
3. 9153 Lorraine Rd, Gulfport | (228) 287-1000
4. 156 Nixon St, Biloxi | (228) 207-2308
5. 2003 Blenville Blvd, Ocean Springs | (228) 875-1272
6. 934 Jackson Ave, Pascagoula | (228) 769-7777



Nell Frisbie
D: 228-493-2024
O: 228-255-3550



**415 Highpoint Dr
Diamondhead**
2 Bed | 2.5 Bath
1217 sqft | \$219,000



Beautifully remodeled Townhome located across from community Club House. Back yard features an oversized deck over looking the prestigious Cardinal Golf Course. Kitchen features stainless steel appliances, quartz counter tops, and vinyl plank flooring. Highpoint offers private pools. Diamondhead POA offers four community pools, an outstanding club house for dining, Tennis world, two championship golf courses and much more.



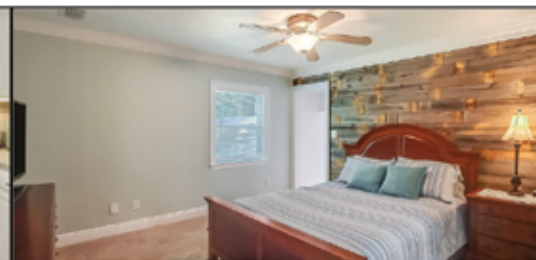
Gina Bradley
D: 985-290-0280
O: 228-467-0244



307 Turner St | Bay Saint Louis
3 Bed | 2 Bath | 1104 sqft
\$292,000



Great Location centrally located in the middle of Bay St. Louis! Cute move-in ready bungalow. Completely remodeled within the last few years. X Flood Zone. Golf Cart Community. Granite countertops & stainless steel appliances. Large corner lot, fenced in yard, lots of parking, large workshop with 110 power. Exterior HardiPlank Type. Furniture is available with listing. Just a short ride to downtown, the restaurants, the beaches, or the casino!



Lynn Grego
D: 228-223-9903
O: 228-255-3550



**7076 W Perry St.
Bay St. Louis**
3 Bed | 2 Bath | 1297 sqft
\$129,000



**242 Molokai
Diamondhead**
1 Bed | 1 Bath | 639 sqft
\$103,000



**15067 Chickasaw Rd | Kiln
Jourdan River Shores**
Waterfront Lot | 0.11 Acre
\$110,000



**85537 W Diamondhead Dr
Diamondhead**
2 Lots | 0.46 Acre
\$62,000



COLDWELL BANKER

**ALFONSO
REALTY, INC.**

**Office: 228-255-3550
4300 Gex Rd. Diamondhead**



Sue Layel, REALTOR®

"I answer my phone"

228.224.2559

sue.layel@gmail.com

www.SueMSRealEstate.com



806 Willow St | Waveland
3 Bed | 1 Bath | 1,189 sqft | \$175,000



Located in Green Acres subdivision, this freshly painted home is move-in ready. Large fenced yard with shed. Very convenient location. Close to shopping, beaches, casinos and more. Must see to appreciate.



**113 Sunridge Park
Gulfport**

2 Bed | 2 Bath
1,430 sqft | \$245,900

Enjoy beach living in this townhome that is close to the beach & downtown Gulfport. Has a wonderful sunrise & sunset view. Updated roof & HVAC. Would make a great vacation rental or second home. Patio with privacy walls. 2 assigned parking spaces. Storage room off the back patio. Sold with most of the furniture.



**HAPPY
ST. PATRICK'S
DAY**

Call me today for
a tour of any of
these fabulous
properties!
228-224-2559

LUCK



208 Kona Villa | Diamondhead

2 Bed | 2 Bath | 951 sqft | \$164,900

Renovated 2 bedroom condo overlooking the 13th green of The Pine Golf Course. Balcony overlooking private green space. Abundant storage throughout. Enjoy the Diamondhead Lifestyle - 2 Championship 18 hole Golf Courses, Tennis World, Walking Trails, Kayak Launches, Marina, Airport, Shopping, Dining and more....

259 Lanai Unit #R | Diamondhead

3 Bed | 2 Bath | 1410 sqft | \$185,000

Fantastic view of the Golf Course and pond. Attic access in the bedroom ceiling - only unit with this pull down access. Updated wiring & circuit breaker box. Pella windows & sliders. Double hung windows in one bedroom. Custom Levelour Cordless Shades. Ceiling fans, GE Microwave, Frigidaire Dishwasher, Washer & Dryer, Samsung 55" TV & Sound Bar, Lanai Monthly Fee Schedule includes: Water, Sewer, Fire, Garbage, Termite, Exterior Maintenance on Building, Liability Insurance, Grounds & Pool Maintenance, Street Lighting, Pest Control & Smoke Detectors.



8524 Op La Way | Diamondhead

3 Bed | 2 Bath | 2,083 sqft | \$317,900

Updated home on three lots totaling more than 1/2 acre! Recent updates include: new paint, carpet, tile, kitchen cabinetry & granite, new A/C & heating system in 2020, new windows throughout in 2007. The office, created in 2014 from former wet bar, adds functional space. The property boasts a shed, irrigation system, & access to amenities such as two 18-hole golf courses, tennis, walking trails, parks, pools, & a marina. Conveniently located an hour from New Orleans or Mobile, this home is a must-see!



• COMMUNITY

Diamondhead Scouts Lead Eagle Projects to Enhance Community



Eagle Scouts Project: Sanders Bennett Bird House Build

BY MICHAEL BURKE

Three local Life Scouts from Scouts BSA Troop 210 are currently working on impactful Eagle Scout projects that will benefit the Diamondhead community. Each of these ambitious projects is designed to improve local wildlife habitats and public spaces, demonstrating the Scouts' commitment to conservation and community service.

Brody Coats: Enhancing Bat Habitats

Life Scout Brody Coats is focusing on increasing the habitat for the local bat population, which plays a crucial role in controlling insect populations in Mississippi. With guidance from Mandy Rigsby, a MSU expert on bats, Brody has designed and begun constructing four bat houses. These houses will be mounted on poles on POA and City-owned property, providing safe roosting spots for bats. Additionally, Brody plans to enhance the area around the bat houses with carefully selected plants, adding a touch of natural beauty to the installation.

Sanders Bennett: Restoring a Bird

Sanctuary

Life Scout Sanders Bennett has taken on the restoration of a bird sanctuary at Maluhia Gardens. Partnering with the Diamondhead Garden Club, Sanders has received expert recommendations on the best materials and designs for birdhouses that cater to local bird species. The Garden Club has also contributed essential supplies to the project. Once complete, five new birdhouses and additional plantings will help revitalize the sanctuary located on Diamondhead Drive East, making it a haven for both birds and visitors.

Trip Willis: Flag Retirement Fire Ring

Life Scout Trip Willis is in the planning stages of his Eagle Scout project, pending necessary approvals. His vision includes constructing a community Flag Retirement Fire Ring—a project that may require fire protection coordination with the Fire Department and approvals from the City of Diamondhead to ensure safety and compliance. Before construction can begin, Trip must obtain approval from community stakeholders and the Pine Burr Area Council Scouting

America Eagle Scout Board, based in Hattiesburg, MS.

These projects not only enrich the environment but also enhance the quality of life for Diamondhead residents. If you would like to support these Scouts in their efforts, donations are greatly appreciated. Contributions will help provide the necessary materials to bring these projects to completion. To learn more or to donate, please visit and follow Diamondhead Troop 210 on Facebook: <https://www.facebook.com/BSA-Troop210MS>.



Eagle Scouts Project: Brody Coats Bat House

HEALTH INSURANCE MEDICARE SPECIALISTS

Lisa Ladner Agency, LLC

5402 Aloha Dr. Suite C | Diamondhead, MS 39525

**Advantage Plans • Medigap Plans
Dental & Vision • Affordable Care Act**



Lisa Ladner
228-424-6125



Brittney Ladner King
228-343-2422



**COLDWELL
BANKER
ALFONSO
REALTY, INC.**

228-467-0244



JOHN HALL

ABR, GRI, e-PRO

Diamondhead Resident since 1995

Call SELL phone:

(228) 669-6111

Also licensed in Alabama for
Orange Beach & Gulf Shores

"CALL HALL"



119 SKYLINE DR - BAY ST. LOUIS

6 BD, 4 BA, 3,043 SF, \$605,550



6612 HALE CT

3 BD, 2 1/2 BA, 2,338 SF, \$329,000



4155 2ND STREET - BAY ST. LOUIS

150 feet on water, 100 feet deep, \$30,000



20 ACRES HWY 49 NORTH - GULFPORT

Zoned B-4 Highway business, \$109,000



7730 MANINI WAY

3 BD, 2 1/2 BA, 3,267 SF, \$379,000.



7824 ALAWAI AVE.

3 BD, 2 BA, 2,734 SF, with 680 SF guesthouse, \$385,000

CALL ME TO DISCUSS LISTING YOUR HOME!

• COMMUNITY

VFW Post 2880 Announces Upcoming Events and Community Initiatives

BY MICHAEL BURKE

Diamondhead's Veterans of Foreign Wars (VFW) Post 2880 will hold its next meeting on Wednesday, April 2 @ 6 p.m., and extends an open invitation to all eligible DD-214 holders. This gathering provides an opportunity for veterans to connect with fellow service members and explore membership in this distinguished organization.

Our Post is actively engaged in several community service projects, including a Food Drive aimed at supporting local food kitchens and veterans in need. Under the direction of Cat Aguda, donations will be accepted throughout April and May. Donations can be dropped at Ace Hardware in Diamondhead. For more information on donation locations or to

arrange a pickup, contact Cat at (228) 297-7207.

Another ongoing initiative is the Laser Engraved Fund-raising Bricks project. These commemorative bricks will be placed at the Blue Star Memorial Byway marker at Maluhia Garden. Community members interested in purchasing a brick to honor a veteran can reach out to Dan Write Email djwright4341@gmail.com.

The Post also invites residents to participate in the upcoming VFW Day of Service on May 3. Volunteers are encouraged to join at Maluhia Garden, located on Diamondhead Drive East, at 8:00 a.m. Participants should wear work clothes as they as-

• See VFW
Page 14

• CAFE

Continued from Page 4

with and to understand more about, memory loss as it relates to the partner and their business: loud music, bright lights, crowds are just a few obstacles that greatly impact people living with dementia.

In contrast, Diamondhead Farmer's Market now opens early every Friday (8:30 am – 9:00 am) especially for dementia caregivers and care recipients. Fewer crowds and lines, and a more peaceful time to shop have been proven beneficial for those facing memory loss. A business can become a Memory Café sponsor by emailing Paige Zachary at pzachary@smpdd.com.

Currently more than 55 million people have dementia worldwide, and every year, there are nearly 10 million new cases diagnosed. It is currently the seventh leading cause of death and one of the major causes of disability and dependency among older people. Dementia robs people of their memories, clarity, and identity, thus exacting emotional, financial, and physical tolls on those fac-

ing the disease and the loved ones standing by their side.

Upcoming Memory Cafés will be held Friday, March 28, 2025 and Friday, April 25, at 10:00 am at the East Hancock Library. We truly hope you will join us and experience all that the Café has to offer.

Finally, if the Memory Café isn't quite right for you at this time, we hope you will help spread the word to your friends and neighbors: we all seem to know someone, who knows someone who would enjoy and benefit from this incredibly worthwhile re-

source that's right here in our back yard. If that "someone" is a caregiver—they need and deserve support as well, and the Memory Café is here for them. If you have Dementia, you are not alone. Many of your neighbors are walking the same path, and together we can enhance the quality of your life. It starts with just a single step—a visit to the Memory Café at East Hancock Library. Here you will find support, encouragement, resources, and new friends to walk beside you.

YOUR HOMETOWN HOME & AUTO TEAM

When you go with State Farm®, you get neighborly service and a local agent — all for a surprisingly great rate. Give me a call and get a quote today.

Like a good neighbor, State Farm is there.®



Kelly Cannon, Agent
137 Highway 90
Waveland, MS 39576
Bus: 228-467-2323
kelly.cannon.cj8d@statefarm.com

State Farm Mutual Automobile Insurance Company
State Farm Indemnity Company
State Farm Fire and Casualty Company
State Farm General Insurance Company
Bloomington, IL

State Farm County Mutual Insurance Company of Texas
State Farm Lloyds
Richardson, TX

State Farm Florida Insurance Company
Winter Haven, FL
2006737

 **State Farm**



BLAKE MATTHEWS
228-234-6984
LOCALLY OWNED AND OPERATED
BKG
PRESSURE WASHING



RE/MAX COAST DELTA REALTY

228-255-2600 | www.coastdeltarealty.com | 5400 Indian Hill Blvd. • Diamondhead, MS 39525



113 MOLOKAI-

One of the best golf course views in this recently updated one bedroom one bath LOWER level condo in Diamondhead's Molokai Village. MLS# 4101452



91 FAIRWAY DRIVE-

Cute as a button all brick home on a lovely corner lot overlooking the #8 Hole of the Pass Christian Isles golf course. MLS# 4102798



227 MOLOKAI VILLAGE-

This 2 bed/ 2 bath condo is being sold AS IS and is priced to sell. MLS# 4100580



6920 HILO WAY-

This brick ranch is on the #5 of the Pine Golf Course. Very well loved and maintained home. Roof is 3 years new. MLS# 4103837



1003 CORR CIRCLE-

Located on cul de sac, near shopping, entertainment, the beach etc. MLS# 4094369



784 MAUI COURT-

This well-maintained 3-bedroom, 2.5-bath contemporary home situated on a quiet cul-de-sac in Diamondhead is ready to welcome you and your family to this great neighborhood. MLS# 4089362



2183 MOLE DRIVE-

Completely renovated inside and out! Superior craftsmanship On the canal with a short distance to the open water. MLS# 4100953



5200 LOWER BAY ROAD-

Fantastic property with two houses and three parcels totaling 7.2 acres! MLS# 4103864



• CHURCHES

ST. THOMAS EPISCOPAL CHURCH

5303 Diamondhead Circle
Diamondhead, MS 39525-3203
(228) 255-9213
mail@stthomasdiamondhead.org
WORSHIP TIMES
Sunday 8:00 a.m. Holy Eucharist
Sunday 10:00 a.m. Holy Eucharist

DIAMONDHEAD COMMUNITY CHURCH

5301 Diamondhead Circle
(288) 255-5556
dhcommunitychurch.org

Weekly Schedule SUNDAY

Worship: 10:00 a.m.
Adult and Children Sunday School classes 9 a.m.
Children Choir Rehearsal 5 p.m.

TUESDAY

GriefShare: 2 p.m.

WEDNESDAY

Youth Activities : 5:30 p.m.
Choir Rehearsal : 5:30 p.m.
All are welcome and invited. Experience all that God is doing in our lives.

DIAMONDHEAD METHODIST CHURCH A GLOBAL METHODIST CHURCH

5305 Noma Drive
Diamondhead, MS 39525
Office: 228-255-6888
Sunday Worship Service: 10: a.m.
Meet and Greet Sunday: 9:30 to 9:55 a.m.

"Together We Are Better" Women's Bible study meets Mondays 6 to 7 p.m. All women are invited. Pamela Boudreaux - 985-647-8200; Alison Kingston - 228-493-1669.

Men's Fellowship Monday from 6 to 7:30 p.m. All men invited.

"Men's Coffee and Christian Conversation" meets every Tuesday morning at 8 a.m. All men welcome.

"Women's Coffee and Conversation meets Tuesdays at 10:30 a.m. Roxanne McCabe - 228-216-6445

DMC events and fundraiser group meets the 2nd and 4th Wednesday at 10 a.m. Jackie Rose, leader, 601-405-4824. "Bible Talk" Thursday at 4 to 5:30 p.m. Co-ed Bible study with Dr. Jim Randolph. All meetings are here at the church. Email: office@diamondheadmethodist-church.org. Website: www.diamondheadmethodist-church.org Facebook: Diamondhead Methodist Church

JACOB'S WELL BAPTIST CHURCH

29554 Vic Faye Road, Pass Christian, MS 39571; 228-255-2555, jacobswellms@aol.com
Worship times on Sundays: 8:45 a.m. Worship, 10 a.m. Sunday School, and 11 a.m. Worship

ANNUNCIATION CATHOLIC CHURCH

5370 Kiln-DeLisle Rd. Kiln, MS 39556
(228)255-1800 www.annunciationkiln.com
Masses: Saturday Vigil 4:00 p.m.; Sunday 8:00 a.m. and 10:30 a.m.; Weekday 8:00 a.m. (Chapel)
Sacrament of Reconciliation: Saturday 3 p.m. to 3:45 p.m.; Sunday 9:45 a.m. to 10:15 a.m. and other times by appointment.
Adoration: Tuesday 8:30 a.m. to 8:00 p.m.; Friday 8:30 a.m. to 9:30 a.m.

LUTHERAN CHURCH OF THE PINES

309 Highway 90
Waveland, MS 39576
228-467-6771
Pastor Brock Cain
Services every Sunday morning are at 10:00 a.m.
Sunday School for children and adults at 9:00 a.m.
Every Wed., we offer Bible study at 1 p.m.

OLD TOWN PRESBYTERIAN

CHURCH, PCUSA

114 Ulman Ave.
Bay St. Louis, MS 39520
Pastor: Rev. Richard T. Gillespie, Th.D.
(256) 443-4100
Worship, 10 a.m.
Adult Sunday School, 9 a.m.

THE CHURCH AT 112

Romans 1:12 -- "When we get together, I want to encourage you in your faith, but I also want to be encouraged by yours." (NLT)
17077 Kapalama Dr., Suite B
Pass Christian, MS 39571
Pastor: James Reardon
Email: james@c112.org.
Our mission is to help encourage the people of Diamondhead and the surrounding areas towards faith in Christ. Our desire is to minister to both the unchurched (those with little or no church experience) and those we call the de-churched (individuals who have been hurt in the past or disillusioned by the actions of some within a church setting). Join us in worship -- Sunday at 10 a.m. We also extend an invitation for you to attend one or more of C 112's monthly activities and events. We offer men's, women's and mixed small groups/Bible studies; children, youth, and family activities. Please check out C 112's regularly updated Facebook page and our website to find out the time, place and description of the events in which you are most interested.

Facebook: C112
Website: c112.org.
Download C112 app: C112

MOST HOLY TRINITY CATHOLIC CHURCH

9062 Kiln Delisle Road
Pass Christian, MS 39571
228-255-1294
Email: admin@mhtcatholic.org
Website: http://mhtcatholic.org
Mass Times:
Monday – Friday: 8:00 a.m.
Saturday: 4:00 & 6:00 p.m.

Sunday: 7:30, 9:00, 11:00 a.m. & 7:00 p.m.
Reconciliation: Saturday 3:00-3:30 p.m., or by appointment
Hospital Ministry – 7 days a week MHT Pastor, Deacons, and/or Eucharistic Ministers visit Memorial Hospital in Gulfport to serve Holy Communion to Catholic patients and staff.
Homebound Ministries – Weekly visits to the parish homebound. Also, the Homebound ministry provides meals twice a month.
Nursing Home - Weekly mass (or Communion Service) to the residents of Woodland Village nursing home.
40 Hours Adoration - MHT Adoration Chapel is open Monday 11am-9pm; Tuesday 9am-7pm; Wednesday 6am-4pm; Thursday 9am-7pm. (see picture).
Adult Faith Formation - Sundays 10:00-10:45am on different topics weekly.
First weekend Mass Talks – Speakers prepare a talk on the Eucharist each month during the 3-year National Revival.
New Quad Chapters on the Eucharist. MHT leadership team are writing new quad part 5 with 11 lessons to bring the Eucharist more into the quad study.



Most Holy Trinity Catholic Church

• VFW

Continued from Page 12

sist in maintaining this community space.

Additionally, Diamondhead's Memorial Day Remembrance Ceremony is scheduled for May 24

at The Club under the Oaks 1100 a.m. This event is golf cart friendly and offers the community a chance to honor and remember those who have served.

Looking ahead, the VFW KOA Classic Golf Tournament is set for November 15. Those interested in sponsorship opportunities may contact

Byron Thompson at (601) 347-4722.

VFW Post 2880 continues its commitment to serving both veterans and the broader Diamondhead community through these projects and events. For more details, veterans and residents are encouraged to attend the upcoming meeting or reach out to the event organizers.

April at the Club: Food, Fun, and Live Entertainment

Spring is in full swing, and the Club has a packed schedule of food specials, live music, and exciting events throughout April. Whether you're here for great eats, music, or a little friendly competition, there's something for everyone.

Thursday Specials: Lasagna Road Trip

Each Thursday, enjoy a rotating selection of Lasagna Road Trip specialties served with French bread.

- April 3 – White Chicken Lasagna
- April 10 – Classic Lasagna
- April 17 – Creole Lasagna
- April 24 – Southern Fried Lasagna

Pricing: \$18 Non-Members | \$15.30 Members

Friday & Saturday Live Music

Our lineup of bands will keep the energy high all month long!

Fridays (7:00 -10:00):

• April 4 – Chee Weez (7-9 PM, Event Lawn) AND
Quarter Notes (9-12 AM, Latitude 30)

- April 11 – Tease Me
- April 18 – Silver City
- April 25 – Southern Voice

Saturdays (6:00 – 9:00):

- April 5 – Razzoo
- April 12 – TBD
- April 19 – Crow Acoustic
- April 26 – Just Teazin

Game Nights & More in Latitude 30

• Bingo Night with Brigitte and Sylvia: April 1 & April 15 at 6:00

• Trivia Night with Ronnie Hammons: The fun begins at 6:30

• Karaoke with Ray Walters: Every Thursday night from 6:00 – 9:00

Saturday Night Shrimp Boil Continues in April! Served with Corn, Potatoes, and Drawn Butter

- Half Pound: \$12
- Whole Pound: \$24

Easter Egg Hunt April 5

On the Walking Trail by the Club. Please call 228-255-1900 ext. 170 to reserve your wristbands.

Easter Buffet April 20

Celebrate Easter with a grand buffet featuring delicious options to suit every palate. Three seatings are available: 10:30 AM, 12:00 PM, and 1:30 PM. Call 228-255-2918 ext. 3 to make your reservation. Menu Highlights:

- o Omelet Station



Keepin' it Reel!

**DIAMONDHEAD POA
ANNUAL KIDS FISHING RODEO**
Saturday, April 12
Registration begins at 8:30
Fishing begins at 9:00
Diamondhead Twin Lakes

- Limited to 200 children - Ages 5 - 13 - Responsible adult must be with child. Call 228-255-1900 ext. 170 or 228-493-2818 to register. Wristbands available after 3/27/25
- Free hamburger lunch for 1st 100 registered children provided by Waffle House. Available for purchase for all others (cash only)
- 10 fish will be tagged. Prizes for those caught (one per child)
- Fishing poles, bait, and t-shirts sponsored by Coastal Conservation Association

Thank you to our sponsors:
Diamondhead POA - Mississippi Department of Wildlife Fisheries and Parks - Department of Marine Resources - Rouss - Waffle House - Coastal Conservation Association




**SHRIMP
Boil**

Every Saturday Night in April, 5:00 – 9:00

SERVED WITH CORN, POTATOES, AND DRAWN BUTTER

HALF POUND \$12
POUND \$24

228-255-2918 

**SATURDAY NIGHT
LIVE
MUSIC**

ON THE PATIO
6:00 – 9:00



April 5 - Razzoo
April 12 - Southern Voice
April 19 - Crow Acoustic
April 26 - Just Teazin

228-255-2918 



KARAOKE
Thursday Night

Every Thursday Night
with Ray Walters

6:00 - 9:00



- Carving Station: BBQ Ribs, Pesto-Crusted Salmon, Herb-Crusted Tenderloin
- Main Line: Fried Chicken, Honey-Glazed Ham, Southern-Style Pot Roast, and more
- Seafood Station: Fried Catfish, Gumbo YaYa, Stuffed Crabs, Shrimp (Fried & Boiled)
- Salads: Strawberry Goat Cheese Salad, Deviled Eggs, Garden Pasta Salad
- Desserts: Lemon Blueberry Bread Pudding, Assorted Pies & Cakes
- Price: \$40 Non-Members / \$34 Members (tax & gratuity not included).
- Seatings at 10:30 AM, 12:00 PM, and 1:30 PM \$40 Non-Member / \$34 Member (tax & gratuity not included). Kids 5-12 \$22

• Non-Member. Member \$18.70. 4 & under free
Bourbon & Cigars April 26 on The Oak Room Patio from 5:00 – 7:00

Don't miss out—April is shaping up to be an exciting month at the Club! Gather your friends, enjoy delicious food, and take in the best live entertainment around. See you soon!

Meet Our New General Manager – Rick Goldstein

We are excited to welcome Rick Goldstein as the new General Manager of The Club at Diamondhead and POA!

Rick is originally from Boston, Massachusetts, and holds an Engineering degree from the University of Massachusetts Amherst. He was a proud member of the University of Massachusetts Golf Team. Throughout his career, he has held various senior management roles in the Medical Device Industry, leading corporations across the country. His career has taken him to Boston, Florida, New Jersey, Texas, and Georgia, where he played a key role in managing and growing organizations.

After years of dedication to his profession, Rick retired to Diamondhead in 2023, embracing the community and lifestyle.



He enjoys golf and fishing, making him a perfect fit for the vibrant atmosphere in Diamondhead.

Rick shares his life with his significant other, Trish, and their beloved pets—Jasmine, a Black Russian Terrier, and Cali, their cat. His son, Devin, is a computer engineer who is following in his father's footsteps with a passion for technology and innovation.

We are thrilled to have Rick's leadership and experience guiding The Club at Diamondhead and POA. Be sure to welcome him when you see him around!

LIVE MUSIC

EVERY FRIDAY NIGHT

7:00 – 10:00

- April 4 – The Chee Weez on the Event Lawn from 7:00 – 9:00 **AND** Quarter Notes in Latitude 30 from 9:00 – midnight
- April 14 – Tease Me Band
- April 18 – Silver City
- April 25 – Southern Voice



APRIL 5 EASTER EGG HUNT

Walking trail by The Club at Diamondhead.
For POA members in good standing.
Wristbands are required. Bring your camera for pictures with the Easter Bunny

**Pictures at 9:00
Egg Hunt at 10:00**
Call 228-255-1900 ext. 170
to reserve your wristbands. Pick up at the POA office. Available after 3/27/25

Breakfast Sandwiches & Burritos are available to purchase in Latitude 30 from 7:30 – 9:30
Regular breakfast menu is available from 7:00 – 10:30



THE CHEE WEEZ LIVE ON APRIL 4!

On the Event Lawn. Entry Wristbands - \$10 per person. Cash only. Entry is Included in the Big Kahuna Player's Package

Gates open at 5:00, and the show is from 7:00 - 9:00. No outside food & beverages or ice chests are allowed. No pets, firearms, or weapons allowed. No age limit. Standing room only. Folding chairs, & blankets are permitted in designated areas. Cash bars will be available, and food is available in Latitude 30 Patio and Grill



TRIVIA NIGHT

Every Wednesday Night, with Ronnie Hammons at 6:30

ENJOY OUR TRIVIA PLATE

Chicken Cracklings, Pork Skins, and Fried Green Beans with Ranch and Blackberry Pepper Jelly \$15

No substitutions. Limited availability

228-255-2918 EXT. 3

• CLUBS

DIAMONDHEAD GARDEN CLUB BY BRIERLEY ACKER

The garden club members are eagerly waiting for all the new plants arriving in the nursery's, getting out the shovels, trowels, garden gloves and kneeling pads. We are ready.

The garden club had a butterfly release in March for the children at the gazebo at city hall. The children released 60 butterflies. The release intended to amplify the theme of the flower show

The garden club will be hosting their annual flower show April 23rd. at the Diamondhead Community Church. The show theme is Protecting Our Pollinators. Show is open to the public 2-6PM

We are still registering Oak trees, if you think you have a tree that qualifies call Joanne Rodosta 504 343 8846

Our next meeting will be April 16th at the Diamondhead Community Church Fellowship Hall. Since time is getting short the program will be how, why, and basic mechanics, making things work. for the flower show. You have the idea but need to figure out how to make work. Sometimes it is a challenge.

Garden clubbers know how to cut their losses

**DID YOU EVER
CONSIDER YOU MAY
HAVE HISTORY
GROWING IN YOUR
YARD?**



Diamondhead Garden Club is looking for Live Oak Trees in our community that are 100 years in age or older. Not sure of your tree's age? The tree must have a circumference of 9 ½ feet or greater measured at 4 ½ feet from the ground. A Garden Club volunteer would be happy to assist you in determining that information. We can also help you get your tree registered with Hancock County Historical Society and provide you with a plaque for the tree that denotes the registered name you choose as well it's age. Diamondhead is fortunate to have an abundance of these beautiful trees throughout our community.

Help us honor these historic Live Oaks by getting them registered!

Contact us: jmfavaloro@yahoo.com

THURSDAY MORNING LINE DANCERS BY MOLLY KOONEY

Lessons and dancing, led by Molly, will be held from 10:00 - 11:00 am on THURSDAYS at the DIAMONDHEAD METHODIST CHURCH, 5305 Noma Drive. Across the street from City Hall.

BUON APPETITO!

LASAGNA ROAD TRIP!

EVERY THURSDAY NIGHT
IN APRIL

April 3 - White Chicken
April 10 - Classic
April 17 - Creole
April 24 - Southern Fried

\$15.30 Member, \$18 Non-Member.
Served with French Bread

THE CLUB
DIAMONDHEAD

APRIL 26

Bourbon and Cigar Night

On The Oak Room Patio

A custom selection of rare and unusual bourbon and cigars. Includes: 2 bourbon tickets, 1 cigar ticket, and light appetizers. Additional pours and cigars are available for purchase, along with a full menu and cash bar. 5:00 - 7:00

Cigars provided by Natal's Tobacco Hut & Fine Cigars
\$45 per person*, plus tax & gratuity. *Discount available for POA members in good standing

THE CLUB
DIAMONDHEAD

BINGO NIGHT

Join us for an evening of fun at our
Bingo Night with Brigitte & Sylvia!

APRIL 1 & APRIL 15
6:00 - 7:30

One free card per person. One additional card per purchase (3 maximum) No cash entry. No cash prizes

**NO CASH ENTRY
NO CASH PRIZES**

Prizes vary weekly - gift cards, food, drinks, merchandise

LET'S JOIN!



CARE⁴ALL CAREGIVERS, LLC

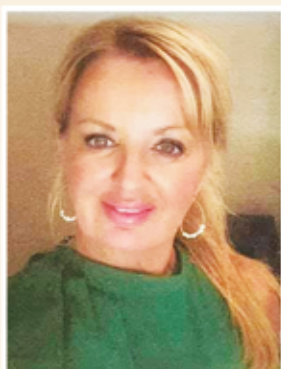


SERVICES PROVIDED:

- Dressing
- Grooming
- Hygiene
- Bathing
- Toileting
- Mobility
- Transference
- Monitoring
- Medication reminders
- Meal Planning
- Meal Preparation
- Light Housekeeping
- Shopping
- Errands
- Elderly Companionship

Care 4 All will file all of your long term care policies.

During time of stress, it's important to stop. Take a breath and remember you're not alone. Please know that our caregivers are ready and available to provide the home care support you and your loved one needs to feel safe and comforted at home.



SANDI ANN
SEYMOUR NECAISE

- LOCALLY OWNED AND OPERATED -

We are a fully compliant home healthcare agency regarding the privacy of every client's personal health data, with caregivers trained in privacy issues.

441 MAIN ST. | BSL, MS 39520
CARE4ALLSENIORCARE@GMAIL.COM



228-493-6363

• CLUBS

Great exercise, great fun, \$1 room rental per person.

FOR DETAILS OR CANCELLATIONS see our web site:

<https://sites.google.com/site/get-moving12345678/>

DIAMONDHEAD WINE CLUB BY MARSHALL KYGER

Join us at our upcoming tastings:

Thursday, April 17, 2025 - Vineyards Less Traveled - 7:00 at the Club Occasionally we like to visit less well known areas such as Lodi, Temecula, Amador County or Mendocino. We're out to select a sampling of the many fine wines produced in these locations. Come see what we find!

Cost is \$45 for DWC members and \$50 for guests. Please make your reservations by mailing your check payable to DWC to: P.O. Box 6523 or by emailing Lou at louertel@aol.com or Marshall at mekygs@mail.com.

If you have questions, call Lou at 630-750-8135 or Marshall at 228-363-2488.

Thursday, May 15, 2025 - Sparkling Wines- 7:00 at the Club

We return with an annual favorite - Sparkling Wines. We're likely to try a French Champagne, a Prosecco, a Cava and a California sparkling wine. And there may be something from the Southern Hemisphere find its way to our table. There are many outstanding wines being produced in each of these areas. Come try some!

Cost is \$50 for DWC members and \$55 for guests. Please make your reservations by mailing your check payable to DWC to: P.O. Box 6523 or by emailing Lou at louertel@aol.com or Marshall at mekygs@mail.com.

NOTE: The Diamondhead Wine Club is dedicated to the exploration and enjoyment of wine. At each monthly tasting, we sample at least 6 different wines and learn a little about their history and origins. The Club is open to any who are interested in enjoying and learning about

wine.

The Wine Club will take the summer off and return September 18th.

If you have questions, call Lou at 630-750-8135 or Marshall at 228-363-2488.

DIAMONDHEAD DEMOCRAT, PROGRESSIVE, INDEPENDENT ALLIANCE BY GERRY GILBERT

The Diamondhead Democrat, Progressive, Independent Alliance (DDPIA) will meet on April 17th at St. Thomas Episcopal Church, 5303 Diamondhead Circle. The meeting begins at 10:00 a.m. with registration and social time followed by the business meeting and a guest speaker. Each monthly guest speaker is always interesting and engaging. Some of the past speakers include the Diamondhead City Clerk, the East Hancock County Library manager, and the Diamondhead POA president. Please join us for what is always an informative and enjoyable time.

DIAMONDHEAD NEWCOMERS BY ALISON MCCRAW

Members and guests of the Diamondhead Newcomers Club were runway ready at the March meeting, as Exit 16 boutique hosted a fabulous fashion show. The fashion show featured club members stepping out onto the catwalk and strutting their stuff in eye-catching outfits from Exit 16. The April luncheon will be held on Wednesday, April 9th and is bound to be Egg-cellent fun! To celebrate wear your favorite Easter Sunday best. Lunch is \$25 and dues are \$20 for the year. RSVP to newcomersdiamondhead@gmail.com by April 2nd to secure your reservation. Wednesday, May 14th will be the club's final meeting of the year, as we say Bon Voyage until next year.

Whether you are new to Diamondhead or have lived here forever, we

hope you will join us for some fun and a delicious lunch at The Club at Diamondhead. Call Marilyn Lott for more information 601-528-3336.

DIAMONDHEAD GEAUX HIKING CLUB BY SHEILA EDWARDS

We're leaving the chilly winds of March behind and inviting in the warmer breezes of marvelous April... but you can't do that while sitting in your house, sooo... here's our April, 2025, schedule. Pick a day (or two) and join the bunch!

Saturday, April 5--Regularly-scheduled first of the month hike on Fountainebleau Trail, in Ocean Springs. This hike is sponsored by the Jackson County Recreation Department, Mississippi Sand-



DH Geaux Hiking Dreaming of Ship Island.

hill Crane Wildlife Refuge, and the Audubon Society and is led by an expert naturalist. The hike meanders through the marsh and is ever-changing. It will be followed by lunch somewhere in or near Ocean Springs. Meet at Twin Lakes a bit before 8:00am. Leave at 8:00am. Hike starts in Ocean Springs at 9:00am.

AN EXCITING CHRISTIAN MINISTRY
WITH CONTEMPORARY WORSHIP!

Jacob's Well

Long Water Is a Tiny Well!

Sunday Worship at 8:45 & 11 am, Live on YouTube at 11
Bible Study (all ages) 10 am
Wednesday 6:30-7:30 pm
Adult, Youth, and Children's Studies and Programs

A PLACE TO GROW YOUR SPIRITUAL LIFE THROUGH WORSHIP,
MISSION OPPORTUNITIES, ACTIVE CHILDREN AND YOUTH GROUPS,
AND HIGH-QUALITY ADULT BIBLE STUDIES

LOCATION: 29554 VIC FAYE RD., 228-255-2555
JUST EAST AND ACROSS FROM THE BROOKLYN CENTER AND
PRESTIGE FITNESS CENTER AT THE BACK OF DIAMONDHEAD

DR. BILL WARREN, PASTOR
ALAN SIMMONS, WORSHIP MINISTER

A MULTI-GENERATIONAL, FAMILY-FOCUSED,
MINISTRY-ORIENTED, SOUTHERN BAPTIST CHURCH
SERVING HANCOCK AND HARRISON COUNTIES

• CLUBS

Leader from Diamondhead to Ocean Springs: Sheila Edwards

*Thursday, April 10—Explore some of our coastal trails, including the Pass Christian beach, PC War Memorial Park and the beach walk in Long Beach. We'll drive to each location, then hike the trail in that area. We'll end with lunch somewhere good (natch!). Meet at the front of the DH Country Club at 9:00am to form car pools. Leader: Betty Whittington

*Thursday, April 17—Let's go to Gautier to Shepherd State Park. Located near the Pascagoula River, the 395-acre park features forested woodlands and wildflowers; and since it's situated along the Mississippi Coastal Birding Trail, it is home to a variety of bird species. There are miles of nature trails. The park's newest trail, a marsh walk opened in 2021. Offering a unique learning experience, its comprised of 1,000 feet of the pier and includes informative signage about local birds, gators, and grasses. Meet at Twin Lakes a bit before 9:00am. Leader: Kat Norton

Thursday, April 24-- Boat Trip to Ship Island to hike along the beach and tour the historic Fort Massachusetts. Pack a small cooler/picnic



DH Geaux Hiking Audubon Park Turtles.

lunch to eat in the covered pavilion or eat at the snack bar (hot dogs, hamburgers, grilled chicken wrap, water etc. at reasonable prices). Hat and sun screen (and maybe even an umbrella) are strongly recommended, as there is no natural shade. Wear soft-soled closed-toe shoes on the boat; switch to flip flops later, if you want. You can swim in the gulf, if you wish; bring your suit and a towel. Beach chairs and large umbrellas available for rent; or bring your own bagged chair. There are restrooms on the island. You must carry everything you bring; no carts or wagons are allowed. Trip cost \$44.00 per person. Credit cards are ok; however, they suggest cash as a backup, as Wifi to the island can be a problem. Meet at Twin Lakes at 7:30; need to be at the dock in Gulfport at 8:15 to get in line to confirm your ticket; boat leaves at 9:00am. It returns at 2:30pm and again at 5:00pm. You can choose either return time, depending on your car pool arrangements. Leaders: Kat Norton & Sheila Edwards

*This hike is a re-schedule from previous month.

Our next planning meeting will be Tuesday, April 1, (no foolin') at 6:00pm in the Kanaka room at the DH Country Club and we'll be making plans for our May, 2025, hikes. Come with your excellent suggestions for places to get out and enjoy our beautiful surroundings.



DH Geaux Hiking Lagoon Bridge Audubon Park.

ROTARY CLUB OF CENTRAL HANCOCK COUNTY BY DR. VIRGINIA BOYLE

Fellow Rotarians of the Rotary Club of Central Hancock County have been very busy these past several months! We enjoyed our speakers, Judith Brannan from The Pink Hearts and Michelle Anderson from Infinity Science Center in February. So many fun things to do at the Infinity Science Center for kids and adults as well! The Pink Hearts help breast cancer patients with resources they might need i.e., wigs!!!



Bill Lawler, President elect and Judith Brannan of Pink Hearts

BUCK RAMOND

HEATING AND AIR

• 10 YEAR PARTS & LABOR | FREON INCLUDED
• FINANCING AVAILABLE
• NEW CONSTRUCTION, CHANGE OUTS & SERVICE AGREEMENTS AVAILABLE.

228.467.1212

2109 NICHOLSON AVE. ◊ WAVELAND, MS

• CLUBS



Dr. Virginia Boyle and Vanessa Benson of Stump and Grind tree Services.

We kicked off March with Vanessa Benson of S N' G services! We are so proud of all of her accomplishments as an arborist!! She shared some very useful facts about trees!

We look forward to our next speaker on March 20, Anderson Dear, Grassroots Engagement Director with Americans for Prosperity-Mississippi

Join us!! Everyone is invited!! Lunch is Dutch treat!



Dr. Virginia Boyle and Michelle Anderson of Infinity Science Center.

Service Above Self!

PEO CHAPTER U

(Philanthropic Education Organization) is celebrating 20 years as a Chapter !!! The Chapter celebrated with a luncheon at Kim Koppman's home. Happy Birthday Chapter U!!



Diamondhead PEO Chapter U



• DIAMONDHEAD AMENITIES

Marina, RV Storage, & Recreation Managers Report

BY DIANNE SIMONSON

Hello everyone,

I want to thank all patrons of the Marina! We only have ONE slip left, leaving one for overnight, weekly, or monthly rent.

I am also over Recreation and RV

storage. If you have any questions or concerns regarding the RV storage facility, please reach out to me via phone call 228-216-9059.

We are gearing up for the summer season and looking forward to lots of sunshine and plenty of pool days!



Diamondhead 

Garden Club

Presents

An NGC

STANDARD

SMALL FLOWER

SHOW

April 23, 2025

2:00 PM to 6:00 PM

The Community Church

5301 Diamondhead Circle
Diamondhead, MS 39525

“THE BIG 4 Birds, Bees, Butterflies and Bats”

Diamondhead Garden Club Community Projects
 DGC Annual Flower Show - Butterfly Release - Live Oak Registration
 Assist Eagle Scout Projects - Maluhia Garden
 Woodland Village Therapeutic Garden


 A Member
 NATIONAL GARDEN CLUBS, INC.
 DEEP SOUTH GARDEN CLUBS, INC.
 THE GARDEN CLUBS OF MISSISSIPPI, INC.
 SPANISH TRAIL DISTRICT
 An NGC FLOWER SHOW presented under the rules and regulations of the
 Garden Clubs' Handbook for Flower Shows 2017 Edition and Changes

Open to the Public, No Admission, ADA Accessible

Skin BREWER®

Aesthetics and Skincare

by Silvana Brewer

228.225.0618 | 4370 LEISURE TIME DR. | DIAMONDHEAD, MS

We offer:

- Wax
- Brow wax
- Facials
- Chemical peels
- Microneedling
- Anti-aging treatments
- Acne treatment
- Rosacea treatment

as well as skincare products



skinbrewer.com



@ Aesthetic Beauty Diamondhead



• DH MARDI GRAS

The Krewe of Diamondhead celebrates its 50th annual Mardi Gras Ball for 2025



Royal Court from left, Duke James Embry, Maid Melissa Embry, Duke Alijah Lee, Maid Kennedy Kingston, Queen Alison Kingston, King Jamie Kingston, Duke Heath Harwood, Maid Jessie Harwood, Duke Dennis Holmes and Maid Pat Holmes.

BY JEREMY DAMIENS

On Saturday, February 22, 2025 excitement filled the air as Krewe of Diamondhead members and special guest began making their way to The Club at Diamondhead's Emerald Ballroom for the 50th annual Mardi Gras Ball.

As members made their entrance, they were greeted with a 1920's speakeasy atmosphere. If you didn't know any better you would have thought you were attending one of Jay Gatsby's lavish

parties. The prohibition era vibe filled the room with flapper silhouettes hanging from hoop swings on the ceiling, and the champagne flowing freely. Guest were greeted with beautiful tables set with gold and black place settings and gold and black chairs commemorating the 50th anniversary and the golden era of the 1920's. Cigarette girls made their way around the room adorned with feather head pieces and flapper dresses as guest made their way to their seats.

The ball opened with the introduction of the

Master of Ceremonies King Ali'I Honua the 46th Kevin Parrington. Guests were asked if they are able to rise for the singing of the National Anthem by Ms. Carolee Ray. As everyone settled back into their seats the Master of Ceremonies Kevin Parrington opened with a brief history of the Krewe of Diamondhead. Founded in 1974, the Krewe of Diamondhead has blossomed over the past 50 years, growing stronger with each passing year.

The visiting royalty guest were welcomed and introduced. In attendance were from the Krewe of Selene, King Tom Koger and Queen Sara Koger; from the Krewe of Olympus King Cat Aguda and Queen Jane Aguda; from the Krewe of Boaters King Thomas Warren and Queen Sue Warren. The Board of Directors were then introduced and thanked for their incredible service to the krewe.

The evening then moved on to the introduction of the Captain of the krewe, and 48th King Hoppy Smith. Guest remained seated as they were trans-

ported back in time to the dazzling, decadent days of the 20's. Stepping straight out of the glamorous Golden Era, the Maids and Dukes of the Royal Court were introduced.

With the beat of jazz in the air and the sparkle of high society, this

Maid and Duke embody the elegance, the excess and the thrill of roaring twenties. As the brass blares and the saxophones croon, they bring to life the spirited energy of the Jazz Age, where every note is a celebration, and every step dances to the

rhythm of the world alive with possibility. It's a night of swaying to the beat and shining like the stars, where the music flows freely, and the atmosphere is filled with intoxicating joy of a time when jazz was king, and anything seemed possible! Repre-

Home & auto. Bundle & save.

Call me for a quote today

 **State Farm®**

Mike Meyers
Agent

835 Highway 90
Bay St. Louis, MS 39520-1630

Bus: 228-467-5011
mike@mikemeyers.us

Availability and amount of discounts and savings vary by state.

State Farm Mutual Automobile Insurance Company, State Farm Indemnity Company, State Farm Fire and Casualty Company, State Farm General Insurance Company, Bloomington, IL.

State Farm County Mutual Insurance Company of Texas, State Farm Lloyds, Richardson, TX.

State Farm Florida Insurance Company, Winter Haven, FL.



• DH MARDI GRAS



2025 Royal Court on stage celebrating the Golden Era

senting jazz, please welcome Duke James and Maid Melissa Embry walked out to the song, sing, sing, sing, by Benny Goodman.

With the air of prosperity and the sparkle of high society, this Maid and Duke embody the elegance, the excess, and the thrill of the roaring twenties. As society's finest gather in grand ballrooms and exclusive clubs, they bring to life the refined spirit of an era marked by social grace, opulent fashion, and perfectly orchestrated gatherings. It's a night of rocking to the beat of legacy and shining like stars, just like Gatsby's glittering parties- where every gesture is poised, every detail is perfect, and the charm of sophisticated world unfolds with every step! Representing this Prosperity please welcome Duke Dennis and Maid Patty Holmes walked out to "New Money" by Samantha Pauley and company.

With the pulse of prohibition in the air and the sparkle of high society, this made and Duke embody the elegance, the excess, and the thrill of time. As the underground speakeasies hum

with secret laughter and clinking glasses, They bring to life the daring spirit of an era defined by hidden indulgence and extravagant parties. It's a night of swinging to the rhythm of rebellion where the secrets are shared In whispers, and the thrill of living on the edge is alive with every step! Representing prohibition please welcome Duke Heath and Maid Jessie Harwood walked out to "Prohibition" by Swing it.

With the allure of love and the spark of desire in the air, this Maid and Duke embody the elegance, the excess, and the thrill of the roaring twenties. In a time when romance was bold and passions were unapologetically indulgent, they bring to life the intoxicating spirit of an era defined by forbidden love, secret flirtations, and exhilarating affairs. It's a night of dancing to the rhythm of longing hearts just like Gatsby's grand affair, where every glance is electric every touch is changed with possibility, and the dance of love and desire unfolds with every step! Representing love, please welcome Duke Alijah Lee and Maid Kenne-

dy Kingston walked out to young and beautiful by Lana Del Rey.

The royal maids were dolled up in custom made sequent gowns, masks, and elaborate feather collars. The royal Dukes wore brilliant matching customized sequent vests. With the Royal Court set on stage the room was filled with trumpeting fanfare with the announcement of the Royal Highness entering to the traditional music of the royal March, the 50th queen Alison Kingston was escorted by His Royal Highness Jeremy Damiens. The queen wore a stunning gold beaded gown, with a beautiful customized white and gold collar. The traditional train was a tended by her pages Drake Everett Harwood and Blakely Evan Giarrusso, also at accompanying the queen was her niece Adeline Cheyenne Sullivan.

Once her Highness was positioned on stage, the room waited with excitement for the entrance of the king. The fanfare played and Ali I Honua The 50th, Jamie Kingston entered the ballroom to the traditional kings song, 'If I ever cease to love'. Jamie wore traditional white tails with King's cape and white and gold customized collar.

The stage was now set with the 2025 Royal Court and king and queen in all their splendor. Given this momentous 50th anniversary the crew paid homage to all past kings and Queens in attendance with a parade of kings and Queens.

As their names were called, they made their way to the dance floor as a tribute to 50 years of legacy. In attendance were, 1996 Her Royal Highness Alice Burkhart and 2015 Her Royal Highness Josette Grace. 2010 Her Royal Highness Janie Dropco and 2021 Her Royal Highness Sarah Parrington. 2012 Her Royal Highness Pat Sheehy and 2018 Her Royal Highness Sarah Koger. 2013 His Royal Highness Mickey Hatem and Her Royal Highness Sandy Hatem. 2019 His Royal Highness Ron Rhoades and Her Royal Highness Dinah Rhoades. 2020 His Royal Highness Scott McNamee and Her Royal Highness Jamie Morgan. 2022 His Royal Highness Joe Doyle and Her Royal Highness Cheryl Doyle. 2023 His Royal Highness Hoppy Smith and Her Royal Highness Suzy Smith. 2024 His Royal Highness Jeremy Damiens and Her Royal Highness Meg Damiens. And finally, one last prior king in attendance tonight 2021 His Royal Highness Kevin Par-

rington.

The room was filled with a standing ovation as the stage represented the rich legacy of the Krewe of Diamondhead.

Guests took their seats as the king and queen announced their distinguished guests in attendance, Doug and Rebecca Backstrom-mother and father of the queen. Janice Dedeaux-mother of the king. Shirley Sullivan-sister of the queen. Randy and Darlene Backstrom-aunt and uncle of the queen. Terry and Dale Waltman- aunt and uncle of the king, and Carlie Cucurullo and Caroline Tibbs- friend of the royal family.

It was now time for the spectacular entertainment put on by the 49th king and queen Jeremy and Meg Damiens, along with their Royal Court and past queen Suzy Smith. A speak easy vibe filled the room as Meg and her Royal Court along

• See KREWE
Page 25



MITCHELL (Mike)
Monsour, Jr.
ATTORNEY AT LAW

- WILLS
- LOUISIANA SUCCESSIONS
- ESTATE PLANNING

- POWER OF ATTORNEYS
- MISSISSIPPI ESTATES
- HOMEOWNERS ASSOCIATION

Call 601-672-4188 • Licensed in MS, LA & NC

mitchell.monsour@gmail.com

• DH MARDI GRAS

A Night to Remember: Celebrating Under the Gryphon



**Krewe of Olympus 2025
Grand Ball**

**BY CHLOE ALMEIDA
PHOTOS BY PENNY
MAJORS**

On January 18, 2025, the Krewe of Olympus hosted its illustrious 17th annual Mardi Gras Ball, an evening steeped in tradition and

grandeur. The venue was transformed into a realm of enchantment, with a striking Gryphon commanding attention at the heart of the room. The decor displayed a rich palette of blues, golds, and whites, creating a regal backdrop for King Zeus XVII Catalino Aguda and Queen Hera XVII Jane Aguda. Their presence radiated elegance and charm, filling the atmosphere with joy and laughter.

As the clock struck 6:00 PM, the doors of the Diamondhead Country Club opened to reveal the splendid Emerald Ballroom. Guests eagerly entered, immersing themselves in the opulent surroundings adorned with exquisite decorations. The melodic strains of the band Southern Voice provided a delightful soundtrack for the

evening, enhancing the festive ambiance as guests mingled, celebrated, and reveled in the excitement.

Krewe President Hawes Amos took to the stage, captivating the audience with a brief yet impactful introduction that underscored the significance of Greek mythology in the Krewe's founding. He spoke of the majestic Gryphon as a symbol of strength and guardianship, reinforcing the theme "Olympus Soars with the Gryphon."

The spotlight then turned to the Master of Ceremonies, Miss Marilyn Lott, whose enchanting rendition of the Star-Spangled Banner left the crowd in awe. The Color Guard presented the colors, infusing the moment with a spirit of patriotism and reverence. Guests who have served in the Armed Forces

were invited to stand, honoring their dedication and sacrifice. This moment charged the atmosphere with respect and unity, setting a dignified tone for the festivities to come.

As appreciation resonated through the hall, attention shifted to the newly appointed leaders of the Krewe of Janus: King Zeus XVI Tim Simmons and Queen Hera XVI Kathy Cobb. Accompanied by their regal attendants, Apollo and Aphrodite, Jamie and Alison Kingston, the couple radiated joy and poise. This introduction marked a significant transition of leadership, as the Krewe embraced its new stewards, eager to

continue the legacy of celebration and community spirit that defines Mardi Gras. The excitement in the room peaked as guests awaited the arrival of King Zeus XVII and Queen Hera XVII. Debbie Garret, resplendent in a flowing turquoise gown that echoed the beauty of Aphrodite, stepped onto the stage alongside her escort, former Apollo Jamie Kingston. Their elegance captivated the crowd, raising anticipation for the royal couple's grand entrance.

As the trumpets sounded and the lights dimmed, the ballroom hushed in eager expectation. The spotlight illuminated the grand en-

• KREWE

Continued from Page 24
with Suzy Smith the 48th queen, Margaret Giarrusso and Renee Lawson. They were rolled through the ballroom on a beautiful black grand piano, with a flirtatious vibe the girls smiled and greeted guests, enticing them to join in the festivities of a prohibition era party.

There was an abrupt hold to the music and fun when past King Jeremy along with some of his Dukes Chris Liese and Trey Giarrusso or-

dered the festivities to stop! It was a raid, Jeremy and his dukes were prohibition agents who ordered everyone to be detained for violating the prohibition law. Then king Jamie Kingston stepped in and saved the day and declared as king of the land that the agents stand down, and to have the night be filled with drinking and foolery. The staff of The Club made a grand entrance with champagne and fireworks. Champagne glasses were charged, and the king offered his toast for all in attendance.

The Royal Court exited

the stage to the song, "In the Mood", by Glenn Miller. Captain Hoppy Smith thanked all in attendance and welcome back to the dance floor the Royal Court of 2025 for their first dance. As the song, "A little party never hurt nobody", by Fergie played, the Royal Court displayed their dancing skills with an amazing, choreographed group dance. As the song came to an end, King Jamie invited everyone to the dance floor to kick off a fun filled night of dancing and celebration.

• DH MARDI GRAS



Krewe of Olympus 2025 Grand Ball



trance, revealing King Zeus XVII Catalino Aguda and Queen Hera XVII Jane Aguda to a resounding applause. Dressed in a dazzling gold sequin gown, Queen Jane epitomized regal grace, while King Catalino's commanding

presence set the tone for an evening filled with splendor.

King Catalino delivered a heartfelt proclamation, expressing his profound love for Queen Hera and gratitude to all attendees for their presence. The royal couple

honored each guest with a challenge coin, featuring the Krewe's emblem, symbolizing their shared bond within the community.

After this touching moment, King Catalino and Queen Hera gracefully took

to the dance floor for their first waltz, their movements fluid and elegant. Their eyes sparkled with affection as warm smiles lit their faces, inviting the Krewe of Janus to join them in a celebration of joy.

As the meal began, guests savored a rich bisque soup as the first course, followed by a succulent pork chop served atop creamy mashed potatoes and accompanied by sweet charred carrots. For dessert, a stunning seven-layer chocolate cake adorned with whipped cream provided the perfect finale to an exquisite dining experience crafted by the Diamondhead Country Club.

Throughout the evening,

guests celebrated beneath the majestic wings of the Gryphon. The Krewe of Olympus extended heartfelt gratitude to all members who contributed to the decoration and organization of the event. Special recognition was given to Sarah Parrington and her committee for their remarkable efforts in creating a truly regal evening. Additionally, sincere appreciation was expressed to King Zeus XVII Catalino Aguda and Queen Hera XVII Jane Aguda for their dedication, love, and profound influence on the Krewe during the 2025 Mardi Gras Season.

Laissez les bons temps rouler, Krewe of Olympus.

• SPORTS

THE CLUB AT DIAMONDHEAD GOLF BY CHRIS ALTESE, PGA DIRECTOR OF GOLF

Spring has sprung here in Diamondhead! Azaleas are blooming and the golf courses are greening up. We are lucky to call Diamondhead home.

With warmer temperatures here, please expect the golf courses to have more play from members and guests. Also, as property owners and annual golf members you are able to make your golf reservations online up to 30 days in advance. Be sure to make your golf reservations at www.TheClubatDiamondhead.com.

The Club at Diamondhead is excited about our upcoming Big Kahuna Golf Challenge. This is a "must play" event. Great golf, great food, and

great parties. You won't believe what is in store for this year. Both Friday night and Saturday are going to be amazing fun. As of this writing, the field is almost full. Registrations are coming in fast. A little history, Don Smith was instrumental in starting the Big Kahuna Golf Challenge over 20 years ago. As part of this event again this year, The Chee-Weez will be performing on Friday, April 4th at 7:00pm. Tickets are available through the clubhouse front office. Call (228) 255-2918 for more information or to secure to seats for one of the best shows of the year. We have selected the Marine Corps League as our charity again this year. The Marine Corps League is helping many of our veterans through funds raised through this event. We expect a tremendous turnout!

The Ladies' and Men's Malahini

Member-Guest events are almost here. Be sure you understand the eligibility requirements for club net events...You must have a current WHS/GHIN handicap index and a minimum of six (6) 18-hole scores, or equivalent, posted within 90 days of the event start date at the time of turning in your registration form and payment. As part of the efforts to maintain and properly utilize the World Handicap System/GHIN at The Club at Diamondhead for our members, we have implemented this eligibility requirement in club events based on net scores or pre-flighted based on handicap/handicap index.

Our 28th annual Sweetheart Scramble was held on Sunday, February 16th, and as usual we had a really fun event. Congratulations to our winners...

Championship Flight –

1st place...Brittany Moak/Dwain Strickland

First Flight –

1st place...Marta Wald/Charles Wald

Second Flight –

1st place...Karen Dougherty/Tom Dougherty

Third Flight –

1st place...Lynn Gros/Mickey Guidrey

Did you know that we can fit you for almost any brand of golf clubs right here at The Club at Diamondhead? This is part of the services that are available to all of our golfers. Say you don't golf...you don't have to miss out on all of the fun. The Golf Academy at Diamondhead can get you enjoying the game of golf in no time. Golf instruction is available for all levels of play and especially beginners. Stop by and give it a swing!

• SPORTS

We guarantee that you will be glad you did.

Cart path only days, as much as we all dislike them, are required from time to time to protect our golf courses from damage. When cart path only, all golf carts, including those with handicaps, must remain on the cart path the entire time. Players should use extreme caution when passing another golf cart so not to damage the golf course when doing so. If you must pass, wait for a high and dry opportunity as well as being sure to pass toward the outside edge of the golf course (not on the tee, fairway, or green side). Also, when we are able to operate as 90-degree cart rule we ask for all golf carts to remain a minimum of 30 yards away from the edge of the green and always return to the cart path side of the green. We appreciate your cooperation.

Upcoming Events...

3/29 Jack O'Neill Memorial Charity (Open to All)

4/4-4/6 Big Kahuna Golf Challenge

4/12 Gulf Coast Slavic Chase (Open to All)

4/19 Most Holy Trinity Golf Event (Open to All)

4/23-4/24 Ladies' Malahini Member-Guest

4/25 PRCC Alumni Golf Event

4/26 Hancock Football Booster Tournament (Open to All)

4/30 Gulf Coast Seabee Golf Invitational

5/3 Jackson State Alumni Golf Event

5/4 US Kids Golf Gulf Coast Local Tour Event

5/5-5/6 Fertilizer Application

5/16-5/18 Malahini Member-Guest

5/24 Gulf Coast Slavic Chase (Open to All)

Other Important Dates...

6/6-6/8 Hawaiian Mixed Couples Invitational

6/9-6/13 Greens Aeration Pine

Golfers...are you doing your part? It's your course too so let's all do our part. Fill your divot and then two more. Repair your ball mark and then two more. They don't even have to be yours! We look forward to seeing you "PLAY MORE GOLF." Let's all get out and enjoy our beautiful golf courses and practice facilities. As always, let us know how we can help.

DWGA JANUARY & FEBRUARY 2025 BY COLLEEN JONES

Are we really in Coastal Mississippi with eight inches of snow? Oh my goodness what a January. We were able to play times in between the rain and snow. January 2 we played a game called Predict Your Score on the Pine Course. We had three players who guessed their score exactly, Colleen Jones, Amy Swint and Marta Wald. Closest to the pin winners were Cassandra Godbold on hole #2, Carol Kirschenbaum on hole #6 and Liz Bell on hole #15. Birdies were had by Cassandra Godbold and Marta Wald. Chip-Ins were had by Cassandra Godbold and Liz Bell.



Predict Your Score winners Marta Wald, Colleen Jones, Amy Swint

January 9th was a rain out or a freeze out I can't remember.

January 16th we played Best 9 of 18 holes on the Pine Course. First Flight had a three-way tie between Liz Bell, Amy Swint and Margie James. The Second Flight winner was Joanne Fried and there was a tie for second place between Colleen Jones and Brigitte Becker. Closest to the pin winners were Cassandra Godbold on hole #2, Colleen Jones on hole #6, Marta Wald on hole #13 and Dianne Ackerman on hole #15. Birdies were had by Terri Woolbright, Margie James, Colleen Jones and Amy Swint. Chip-Ins were had by Dianne Ackerman, Marta Wald and Jill Wiles.

January 23rd was the week of the Big Snowstorm.

January 30 we played a game called Nassau on the Pine Course. This is where you have the lowest score on the front, back and 18 holes. The first flight winners were Front-Marta Wald, Back-Liz Bell and 18 holes Amy Swint. The second flight win-

ners were Front-Pat Ellis, Back-Cammie Walkington and 18 holes Joanne Fried. Closest to the pine winners were Jill Wiles on hole #2, Bet Bowen on hole #6 & #13 and Judith Sonntag on hole #15. Birdies were had by Bet Bowen and Amy Swint. Chip-Ins were had by Liz Bell, Anne Payne and Amy Swint.

February 6th we had our

Trophy Day played on the Pine Course. The First Flight Gross winners were Terri Woolbright 1st place and Liz Bell 2nd place. The First Flight Net winners were Marta Wald 1st place and Karen Dougherty 2nd place. The Second Flight Gross winners were Colleen Jones 1st place and Bet Bowen 2nd place. The Second Flight Net winners were Rosa Humphrey 1st place and Tiffany Webb 2nd place. Closest to the Pin winners were Karen Dougherty on hole #2, Terri Woolbright on hole #6, Anne Payne on hole #13 and Judy Sonntag on hole #15. Birdies were had by Marta Wald with 2, Jill Wiles with 2, Terri Woolbright, Carol Kirschenbaum and Judy Sonntag. Chip-Ins were had by Jill Wiles and Denise Bergeron.

February 13th we played a game where you could pick



ZACH BUTTERWORTH

ATTORNEY AT LAW

- ☒ MISSISSIPPI ESTATES
- ☒ LOUISIANA SUCCESSIONS
- ☒ ESTATE PLANNING
- ☒ WILLS
- ☒ POWER OF ATTORNEYS
- ☒ TRUSTS



 Licensed in MS & LA

 Call 228-255-7500

 zbutterworthlaw@bellsouth.net



• SPORTS



Best 9 of 18 winners Margie James, Amy Swint, Joanne Fried, Colleen Jones



Trophy Day Tiffany Webb, Rosa Humphry, Bet Bowen, Colleen Jones, Terri Woolbright, Liz Bell, Marta Wald, Karen Dougherty



Pick Your Partner - Mary Wright, Joanne Fried, Tiffany Webb, Cassandra Godbold

your own partner on the Cardinal Course. First Flight winner was Tiffany Webb (she picked Joanne Fried)

second place was Cassandra Godbold (she picked Colleen Jones). Second Flight winner was Joanne Fried (she picked

Terri Woolbright) second place was Mary Wright (she picked Liz Bell) and Judy Sonntag (she picked Karen Dougherty). Closest to the pin winners were Joyce Teerling on hole #4, Cassandra Godbold on hole #7, Marta Wald on hole #13 and Judy Sonntag on hole #17. Birdies were had by Marta Wald, Tiffany Webb, Cassandra Godbold, Karen Dougherty, and Mary Wright. Chip Ins were had by Marta Wald, Tiffany Webb and Judy Sonntag.

February 20th was a freeze out.

February 27th we played Match Play Against Par on the Cardinal Course. First Flight winners were Tiffany Webb 1st, Liz Austin 2nd, Mary Lou Czaplicki 3rd and there was a tie for 4th place between Karen Dougherty and Jeanne Hudgins. Second Flight had a three way tie between Colleen Jones, Joanne Fried and Amy Swint. Second place had a two way tie between Denise Bergeron and Margaret Papaleo. Closest to the pin winners were Denise Bergeron on hole #4, Cassandra Godbold on hole #7, Karen Dougherty on hole #13 and Marta Wald on hole #17. Birdies were had by Joyce Teerling, Karen Dougherty with 2, Marta Wald with 2, Liz Austin with 3 and Mary Lou Czaplicki. Chip Ins were had by Joyce Teerling, Terri Woolbright and Mary Lou Czaplicki.

DIAMONDHEAD PICKLE BALL BY KATHRYN LEWIS

Diamondhead Pickleball Players are supporting the Hancock Boys and Girls Club! The Players are donating Pickleball Paddles, balls, and volunteering their time for beginner clinics/lessons to introduce the students to the game. The MS Gulf Coast Pickleball Inc. is donating

nets, balls and clinic/lesson assistance. (pictured: Drew Pretzel from Diamondhead... Hancock County Board Member, Terry Davis...President of MGCP Inc Board of Directors, Greg Merrill..Boys n Girls Club, and Tom Linenberger..Board Member)



Diamondhead Pickleball Players supporting the Hancock Boys and Girls Club



The Diamondhead Picklers are donating pb paddles and balls to the Hancock Boys and Girls Club. They are also volunteering to help with clinics and beginner lessons for the Boys and Girls Club.

• SPORTS

DMGA
BY JAN VEST

After Ground Hog’s Day we new we would have some cold days. Despite the cold we had loyal members come to play – We are all thankful for the return of spring like temperatures after the cold

Diamondhead Men’s Golf Association. February Results – Peers - 2BB (2/5/2025)
Team Result

Player Name	Team Earnings(\$)	Individual Earnings(\$)	Total Earnings(\$)	TScore	Indiv. Score
Daryl Vaught	17	5	22	-20	79/68
Brian Brown	17	5	22	-20	
Tommy Murphy	17	5	22	-20	
Chuck Ingraham	17	5	22	-20	
Alan Cason	17	5	22	-15	
Brian Brignac	17	5	22	-15	
Gary Hava	17	5	22	-15	
Larry Popovich	15	5	20	-15	
Kevin West	15	5	20	-15	
Tom Woolbright	15	5	20	-15	

Player Name	Team Earnings(\$)	Individual Earnings(\$)	Total Earnings(\$)	TScore	Indiv. Score
Joe Doyle	15	5	20	-15	
Darren Rapert	15	5	20	-15	
Renny Pangan	15	5	20	-14	
Lee Kormandy	15	5	20	-14	
Donald Crosby	15	5	20	-14	
Erie Hebert	15	5	20	-14	
Marshall Miller	15	5	20	-13	
Sam Lee	15	5	20	-13	
Neil Ricker	15	5	20	-13	
Paul Yarbrough	15	5	20	-13	

Closest to the Pin (C.T.P.) Winners
Player Name Hole # Prize (\$)
Mike Zeringue #4 20 5"-6"
Daryl Vaught #7 20 1'-11"
Val Miller #13 20 1'-1"
Lee Kormandy #17 20 9"-2"
Total Prize Money Awarded
• Team Total: \$276
• Individual Total: \$281

February Results – ABCD - Scramble (2/12/2025)	Team Earnings (\$)	Individual Earnings (\$)	Total Earnings (\$)	T-Score	Indiv. Score
George Thibodeaux	15	15	30	-10	
Lee Kormandy	15	15	30	-10	
Chuck Ingraham	15	15	30	-10	
Dennis Tauzin	15	15	30	-10	
Dave Wright	15	15	30	-9	
Tom Woolbright	15	15	30	-9	
Joe Doyle	15	15	30	-9	
Steve Garcia	15	15	30	-9	
John Legner	12	12	24	-9	
Dennis Laumann	12	12	24	-9	
Alan Cason	12	12	24	-9	
Jan Vest	12	12	24	-9	

snaps we had to endure. Here are some cold-weather golf jokes to warm your spirits:
1. Why don’t golfers ever get lost in the snow?
They just follow the fresh divots!
2. What do you call a snow-man playing golf?

A snow wedge!
3. Why did the golfer bring an extra pair of socks to the winter tournament?
In case he got a hole in one
Weekly Tournament February Results.
Dave Wright had a eagle on hole #5, Pine this past Wednesday, February 5th.

February Results – ABCD - Scramble (2/12/2025)
Player Name Team Earnings (\$)

Player Name	Hole #	Prize (\$)	Distance
Alan Cason	#2	12	10'-2"
Chuck Ingraham	#6	12	0'-7"
Lee Kormandy	#13	12	4'-10"
Joe Doyle	#15	12	1'-3"

February Results – ABCD-Shamble-2BB (2/19/2025)
Player Name Team Earnings (\$)

Player Name	Team Earnings (\$)	Individual Earnings (\$)	Total Earnings (\$)	T-Score
David Barbato	11	11	22	-22
John Black	11	11	22	-22
Leonard Alphonso	11	11	22	-22
Arthur Burgoyne	11	11	22	-22
Neil Ricker	9	9	18	-18
Erie Hebert	9	9	18	-18
Mike Zeringue	9	9	18	-18
Alan Cason	9	9	18	-18

Closest to the Pin (C.T.P.) Winners
C.T.P. HOLE \$ DISTANCE
Erie Hebert #4 \$6 10'-5"
Neil Ricker #7 \$6 28'-0"
Mike Zeringue #13 \$6 10'-3"
Dave Barbato #17 \$6 16'-9"
Diamondhead Men’s Golf Association
February Results – Peers - Stableford (2/26/2025). Team Results

Player Name	Team Earnings(\$)	Individual Earnings(\$)	Total Earnings(\$)	TScore
Tom Woolbright	18	18	36	123
Gary Blackwell	18	18	36	123
Kevin West	18	18	36	123
Erie Hebert	18	18	36	123

Player Name	Team Earnings(\$)	Individual Earnings(\$)	Total Earnings(\$)	TScore
Lee Bell	14	14	28	119
Ronnie Austin	14	14	28	119
Leonard Alphonso	14	14	28	119
Arthur Burgoyne	14	14	28	119
John Legner	14	14	28	119
Marc Patrick	14	14	28	119
Val Miller	14	14	28	119
John Bunce	14	14	28	119
Daryl Vaught	11	16	27	116
Chuck Ingraham	11	11	22	116
Bill Mema	11	11	22	116
Dennis Laumann	11	11	22	116
George Thibodeaux	9	9	18	115
Michael Lindell	9	9	18	115
Todd Cobena	9	9	18	115

Closest to the Pin (C.T.P.) Winners
Player Name Hole # Prize (\$)
Sam Lee #2 20 1'-8"
Chuck Ingraham #6 20 6'-0"
Val Miller #13 20 13'-8"
Val Miller #15 20 0'-11"

DWGAN
BY SHIRLEY HALTERMAN

With friendlier weather conditions, more of our ladies are coming out to play our favorite game. We are delighted to have gained some new members bringing our current total membership to 62 gals! We would also like to take this opportunity to

introduce our current officers and thank them for all the time and effort they contribute to our group. This year’s President is Brigitte Becker, Vice President is Janice Murray, Treasurer is Nancy Barker, Secretary is Susie Fontenot and Cathy Gessell serves as our Handicap Chairperson.
Playing from the Black Tees was the game for Tuesday, February 18th. We were on the Front Nine of the Cardinal Course, and you may think playing from these forward tees would make the game easier. Tain’t necessarily so when you find yourself playing the course from a very different angle. As we were playing straight tee times, our numbers were limited. Twenty gals turned out to play. Our winners were: Flight One — 1st Place = Therese Mauterer posting a net score of 36 while Kim Knight came in 2nd Place (in a scorecard playoff) with a net score of 37 and in 3rd Place it was Tracey Garriga also posting 37. In Flight Two, we had another score card playoff with Nancy Barker posting a 37 and Susie Fontenot coming in 2nd Place also posting a 37. 3rd Place was taken by Cammie Walkington who had a 38. When it came to Flight Three, 1st Place honors went to Pauline Singer with a 34, 2nd Place with a 36 went to Judy Wright and 3rd Place to Pattie Blackwood with a 37. Therese Mauterer also scored a Birdie on Hole #9.
The following Tuesday, February 25th, found us



The Ladies of DWGAN

playing a Schamble with each four member team posting a Net Score. Heavy rains over the previous few days meant that we were playing "cart path only" on the Back Nine of the Pine Course. You get much more exercise this way especially if you tend to hit you shot the farthest from the cart path. Our First Place Team was composed of: Kathie Esher, Tracey Garriga, Ruth Holmes and Nancy Sislow with a net score

of 138. In Second Place we found Kathy Jones, Betsy Lyons, Kathie Pierson and Judy Wright scoring 142. And last, but certainly not least, Third Place was garnered by the team of Brigitte Becker, Mary Mizell, Janice Murray and Judy Sonntag bringing in a score of 148.

On March 4th, we all showed up in our Mardi Gras finery to play a game called Mardi Gras Mambo on the Front Nine of the Cardinal

Course. Thirty-three gals fielded 11 Teams for this competition. First through Fifth Place Teams were awarded ProShop Dollars. Our First Place Team of Pattie Blackwood, Marilyn Galus and Cheryl Saak posted a score of 71, Second Place went to the team of Janice Murray, Kathie Pierson and Pauline Singer bringing in a score of 72. Third Place was granted to Robin Johnson, Barbara Linville and Judy Wright scoring 73. When it came to Fourth and Fifth Place we found ourselves with a scorecard playoff as both teams scored 75. The results of the playoff showed Judi Brannan, Sue Hebert and Judy Sonntag taking the Fourth Place honors with the team of Shirley Halterman, Kathy Jones and Judy Tauzin coming in with Fifth Place honors.

We, once again, were playing with limited scheduled Tee Times on Tuesday, March 11th. Seven tee times allowed us to accommodate our 26 players for a game from the 150 yard markers on the front of the Pine Course. Once again, you might think playing all the holes this close to the Green would be a walk in the park. Maybe yes: maybe no! This time your Gross Score was posted. In Flight One, Judy Lakota took 1st Place, Tracey Garriga took 2nd Place and Toni Rossol came in 3rd. In Flight Two, 1st Place went to MaryAnn Stromeyer, 2nd Place to Brigitte Becker and 3rd Place to Nancy Sislow. When it came to Flight Three, 1st Place went to Cammie Walkingtobn, 2nd Place to Janice Murray and 3rd Place to Cathy Gesell. Not to be left behind, Flight

Four awards were taken by Sylvia Corban in 1st Place, Sue Hebert in 2nd Place and Kathy Jones in 3rd Place. During this competition we also gave awards for Lowest Putts.

Toni Rossol and Kathie Pierson took those honors in Flight 1 both posting 16 putts. Ann Nutting posted only 15 putts to win in Flight 2, while Judy Brannan posted 15 for Flight 3 and Sylvia Corban had 15 putts in Flight 4. When it came to Closest to the Pin, there were no win-

ners in Flights 1 & 4, but Susie Fontenot took the honors for Flight 2 and Judy Brannan did the same for Flight 3. Both Judy Brannan (hole #5) and Sylvia Corban (hole #2) had Chip-Ins.

We sincerely hope you will continue to follow our adventures chasing that little white (or whatever color you choose) ball around our great Diamondhead Golf Courses. Until next time, remember the 3 Fs — Forward, Findable and in the Fairway!



presents

Robin Hood

by Tim Kelly

Friday April 4, 2025 7:00 PM

Saturday April 5, 2025 7:00 PM

Sunday April 6, 2025 2:00 PM

The Randolph Center

315 Clark Avenue, Pass Christian, MS

Produced by special arrangement with
Pioneer Drama Service, Inc., Denver, Colorado

228-274-5404
dsfa@dsfaglobal.org

Tickets:
VIP: \$30
General: \$20
Students: \$15



Early Bird Tickets
Purchased before
March 10th:
VIP: \$25
General: \$15
Students: \$10



BUSINESS BROWSER

INSURANCE, HOME CARE, MUSIC
LESSONS, SHOPPING, LAWN & GARDEN
BUSINESSES ARE FOUND BELOW

TO ADVERTISE IN THE DIAMONDHEAD
NEWS OR FOR MORE INFORMATION,
PLEASE CALL US TODAY AT 228-467-5474.



**Your Ad Could
Go Here!**
**Call Us Today at
228-467-5474!**



SOUTHGROUP
INSURANCE SERVICES
GULF COAST

LOWEST INSURANCE
RATES ON THE COAST FOR
HOME, AUTO, BOATS, TOYS,
AND ALL BUSINESS RISKS

CALL OR TEXT US
(228) 466-4498

Angelyn Treutel Zeringue
info@southgroupgulfcoast.com



We make Saving Easy

IRON MAGNOLIA ANTIQUES
— Visit once & you will be back —



- One-Of-A-Kind Gems & Antiques, You'll be pleasantly shocked.
- Explore 9 Large Rooms full of Vintage Antiques, Pottery, Stained Glass & Elegant Glassware.
- Walk our Lawn & Garden areas for Fountains, Urns, Pots and Concrete Garden Features to set up your Garden.

228.918.6468 | Open Fri., Sat. & Sun. from 12pm to 5pm
6030 Menge Avenue, Pass Christian, MS 39571

Pine Hills
nursery

Now is the Time to Plant
Fruit • Flowering • Shade Trees

Your Full-Service Garden Center



HOURS:
Mon-Sat
8:30-5:00

www.pinehillsnursery.net
228-255-9645

7434 Cuevas Rd
Pass Christian





**Farmer's
MARKET**
Diamondhead

FRIDAY 9 AM - 1:00 PM
**5000 DIAMONDHEAD CIRCLE,
DIAMONDHEAD, MS 39525**
**EVERY FRIDAY AND 3RD
SUNDAY**





Diamondhead News



Diamondhead News

PRSRT STD
U.S. POSTAGE
PAID
BATON ROUGE, LA
PERMIT NO. 88

7610 Country Club Cir., Diamondhead, MS 39525



Let the Good Times **BOIL!**

Win a **Bayou Classic Boiling Pot Set!**

- Earn entries Sunday-Thursday through June
- Drawings held Sunday-Thursday at 7 p.m.
- Activate entries after 5 p.m. on drawing days

*Must be present to win. See Players Services for details. Photos for advertising purposes only.
Actual items may vary.*

SILVER SLIPPER
CASINO HOTEL

www.silverflipper-ms.com • 1-866-SLIPPER • 1-866-754-7737
5000 South Beach Blvd. • Bay St. Louis, MS 39520