

Diamondhead News

AUGUST 2024

www.diamondheadms.org

VOL. 42, NO. 08

FROM THE DESK OF THE PRESIDENT

BY **NANCY SISLOW**

AUGUST 2024

Your POA Board has spent the last month getting oriented and organized. We met to get started on June 18th. The out-going Directors briefly shared their insight about their roles and activities with the new members. Introductions were made all around and included key administrative staff members, Andrea Jones, POA legal counsel, Darrion McInnis, POA controller, and Greg Abadie, POA General Manager. Ex-Officio Gary Becker shared the history of Diamondhead and the POA. After a review of the role and responsibilities of the Board, we planned meeting dates and format. Setting up Committees of the Board was next. As you may know, the Board uses committees aligned with key departments of the POA organization to provide member input to the department managers as well as assure communication to all Board members of the needs of the organization for its important functions. A call for POA members in good standing to serve on these committees has been sent and invitations to serve have been sent to those who expressed interest as well as a big "Thank You" to those whose volunteerism cannot be used at present. Working together we

can serve the best interests of the majority.

I mentioned last month that I hope to share with you the history of the Diamondhead POA, trying to capture all that has transpired to make it the resort community it is today. The first action to incorporate the Diamondhead Country Club and Property Owners Association was taken on June 2, 1970 with a meeting that included members P. Holcomb Hector, William C. Brent, Jr., Mrs. Lloyd Breland (women's first names were not used in 1970), and Ralph M. Prince. They formally "Resolved that P. Holcomb Hector, William C. Brent, Jr., Mrs. Lloyd Breland, and Ralph M. Prince, be and are hereby authorized to make application to the Secretary of State of the State of Mississippi for a Charter of Incorporation of the Diamondhead Country Club and Property Owners Association, as a non-profit and non-share corporation."

The Charter of Incorporation specified that the membership be composed of those that sought the incorporation and owners and purchasers of lots in the Diamondhead development. The Charter also includes that the Corporation is a civic improvement organization devoted to the improvement of the Diamondhead development. After being filed in Hancock County and

reviewed by the State of Mississippi Attorney General, the organization received its formal approval on June 5, 1970. You can review the Charter on the Diamondhead Property Owners website, under Board Busi-

ness, Charter, Bylaws & Regulations - <https://diamondheadms.org/charter-bylaws-regulations/>.

• See **PRESIDENT**
Page 2

A NIGHT TO REMEMBER! Team Wine Blending Event

AUGUST 24, 2024
Drink, Eat, and Learn!

Blend your own wine! Barry Dodds, a National Wine Educator of Freemark Abbey, and other wine masters will teach you how to blend your own wine during a three-course meal with mingle appetizers.

Featuring Montanzas Creek Sauvignon Blanc, Freemark Abbey Chardonnay, Freemark Abbey Cabernet Sauvignon Nappy Valley 2019.

Menu:

Appetizer:

• Specialty Oyster & Seafood Bar

Entree:

• 7 oz Pepper-Crusted Prime Filet, Gouda
Hasselback Potato, Smoked Cauliflower

Salad:

• Spicy Crab & Avocado Salad

Dessert:

• New Orleans Chocolate Beignets with
Sea-Salt Caramel

• Emerald Ballroom. Doors open at 6:00.

• First pour and appetizer with instruction course begins at 6:30

• Blending Kits Provided

• \$120 Inclusive. Discount for POA members in Good Standing.

• Reservations are required • Prize for Best Blend!



7600 Country Club Circle | Diamondhead, MS
228-255-2918 ext. 3
@ClubatDiamondhead



Diamondhead News

The Diamondhead News is the ONLY official voice of the Diamondhead Country Club and Property Owners Association, Inc. As such, it is solely responsible for its content. The Diamondhead Property Owners Association, Inc. will maintain sole control of the editorial content. A monthly publication by the Diamondhead P.O.A.; offices are located at 7610 Country Club Circle, Diamondhead, MS 39525. ALL SUBMISSION REQUESTS MUST BE SUBMITTED BY THE 15TH OF EVERY MONTH.

EMAIL: DHNEWS@DHPOA.ORG

TELEPHONE: 228-255-1900

EDITOR: CANDICE BOONE

Subscription info: DHPOA Membership 255-1900

The Sea Coast Echo will be responsible for production, printing, advertising and distribution (by mail) of The Diamondhead News. For advertising, call Janet Woolsey at 601-850-3939 or email janet@seacoastecho.com.

POA BOARD OF DIRECTORS

Nancy Stalaw (president) | 847-271-7474
nstalaw@dhpoa.org

Brent Lee (director) | 832-485-9872
blee@dhpoa.org

Trey Garrison (vice president) | 504-460-1717
tgarrison@dhpoa.org

Bob Finnan (director) | 734-377-6046
bfinnan@dhpoa.org

Bill Blackwood (treasurer) | 601-818-1888
wblackwood@dhpoa.org

Shawn Stroninger (director) | 713-851-7884
sstroninger@dhpoa.org

Meg Daniels (secretary) | 228-213-7967
mdaniels@dhpoa.org

Michael Tubbs (director) | 737-817-2817
mtubbs@dhpoa.org

Maart Mulling (director) | 228-985-2589

Gary Becker (ex officio) | 815-218-2761
gbecker@dhpoa.org

Ronnie LaFontaine (director) | 228-671-9169
rlafontaine@dhpoa.org

ASSOCIATION STAFF

Greg Abadie..... General Manager
Damon McIntire..... Controller
Sue Kinsley..... Legal & Administrative Assistant
Ginger Neerise..... Member Advocate/Covenant Enforcement
Candice Boone..... Managing Editor
Chris Alkose..... Director of Golf
Happy Smith..... Director of Player Development
Don Hamman..... Golf Superintendent
Adam Humphreys..... Facilities Superintendent
Donna Goodde..... Recreation/Tennis Club Administration
Matt Gorman..... Tennis Professional
Dianne Simonson..... Harbor Master
Nancy Perkins..... Sales & Marketing
Andrea Jones..... Legal/HR Administrator

EXTENSION DIRECTORY

POA Office 255-1900 or 1-800-321-3840
Fax 255-4296
Airport 255-0502
Facilities Maintenance 255-3343
Country Club 255-2918
19th Hole 255-5005
Fire District/Emergency 911/Business 255-1314
Golf Pro Shop 255-3910
Golf Tee Times 255-5517 or 1-800-346-8741
Marina 228-216-9059
Personnel 255-1900 ex-123
Diamondhead Water & Sewer District 255-5813
Tennis World 255-5030
Waste Collection 832-3144

DIAMONDHEAD COUNTRY CLUB & PROPERTY OWNERS ASSOCIATION, INC. Board of Directors Financial Summary, June 30, 2024

Month	Revenue	Expense	Net Income (Net Loss)	Budget	Budget Variance	Dues Allocation
Membership Dues	273,146	-	273,146	252,008	21,138	-
Country Club	265,679	303,548	(37,869)	(13,530)	(24,339)	37,869
Community Center	1,053	7,923	(6,870)	(4,962)	(1,908)	6,870
Tennis	8,038	9,689	(1,651)	(2,705)	1,054	1,651
Golf Shop	244,821	75,617	169,204	137,675	31,529	-
Golf Course Maint	-	149,992	(149,992)	(174,289)	24,297	-
Golf Academy	3,512	10,408	(6,896)	(7,130)	234	6,896
Grounds Maint	-	34,799	(34,799)	(32,336)	(2,463)	34,799
Facilities Maint	-	26,466	(26,466)	(32,600)	6,134	26,466
Marketing	225	12,417	(12,192)	(12,483)	291	12,192
Pier House	5,625	2,552	3,073	4,007	(934)	-
Airport	1,200	863	337	780	(443)	-
Marina	15,519	12,389	3,130	(4,403)	7,533	-
Recreation	2,345	35,306	(32,961)	(20,820)	(12,141)	32,961
Administration	8,120	91,730	(83,610)	(101,860)	18,250	83,610
Totals	829,284	773,699	55,585	(12,647)	68,232	243,313

Year-to-Date	Revenue	Expense	Net Income (Net Loss)	Budget	Budget Variance	Dues Allocation
Membership Dues	1,605,941	13,968	1,591,972	1,507,048	84,924	13,968
Country Club	1,712,159	1,914,668	(202,509)	(41,145)	(161,364)	202,509
Community Center	9,626	54,071	(44,445)	(34,088)	(10,357)	44,445
Tennis	42,177	59,506	(17,329)	(4,712)	(12,617)	17,329
Golf Shop	1,442,113	424,822	1,017,291	956,946	60,345	-
Golf Course Maint	-	846,202	(846,202)	(934,911)	88,709	-
Golf Academy	24,182	66,817	(42,635)	(36,636)	(5,998)	42,635
Grounds Maint	-	182,357	(182,357)	(193,982)	11,625	182,357
Facilities Maint	-	171,551	(171,551)	(207,744)	36,193	171,551
Marketing	525	90,640	(90,115)	(78,704)	(11,411)	90,115
Pier House	33,750	14,035	19,715	(6,938)	26,653	-
Airport	7,200	8,182	(982)	4,399	(5,381)	982
Marina	60,906	56,000	4,906	(20,343)	25,249	-
Recreation	8,183	128,235	(120,051)	(92,715)	(27,336)	120,051
Administration	69,115	679,301	(610,186)	(621,256)	11,070	610,186
Totals	5,015,877	4,710,355	305,522	195,219	110,302	1,496,130

Capital Projects	Expensed	Approved	Variance
Grounds	-	-	-
Country Club	3,745	3,745	-
Golf	45,402	45,402	-
Tennis	-	-	-
Recreation	9,918	9,918	-
Facilities/Maintenance	-	-	-
Administration	-	-	-
Marina	-	-	-
Airport	-	-	-
Contingency	4,522	4,522	-
Totals	63,586	63,586	-

• PRESIDENT

Continued from Page 1

And the Diamondhead Property Owners Association began its journey to today.

Thank you, again, for the opportunity to help keep Diamondhead amenities moving forward.



JANET WOOLSEY
MARKETING REPRESENTATIVE

▪ **Diamondhead News**

601.850.3939

janet@seacoastecho.com

• COMMUNITY

Enhance your summer with finds at East Hancock Library

East Hancock Library
By Mary Gobert

Don't let the dog days of August get you down! Get toasty by the pool with a good beach read or retreat from the heat with a DVD! And of course, there's always an interesting activity at the library!

Our city-wide venture, "Diamondhead Reads" continues. Copies of our community shared book, *My Two Elaines: Learning, Coping, and Surviving as an Alzheimer's Caregiver* by Martin Schreiber is available at the library. You don't need a library card to take one, but if you don't have a card, get one while you're there! There was a great turnout for the Ribbon Cutting held for this endeavor on July 1. We hope many community members will read the book prior to the author coming to Diamondhead in late fall to discuss it. This will be such a special event!

In the meantime, the regular schedule looks like this:
Monday, Aug 19- Storytime for the littles returns at 10:30. Reading, crafts, and fun for the pre-school set.

Literary Society of Diamondhead (LSD) Book Club-Wednesday, Aug 14 at 10:30. The August book is the community read, *My Two Elaines*. It's a great time to get involved!

Conversational Spanish-1:00

on Thursdays. If you've got a bit of Spanish skill, come polish it up!

Sit and Be Fit-Fridays at 10:30. This is a popular stretching and balance workout!

Crafts and Conversation-Fridays at 12:30. Bring whatever craft you're working on and do it with some company!

1st and 3rd Monday-Acrylic Painting for Adults at 1:00. Come enjoy this activity on the 5th and 19th. Everything you need is furnished.

Tuesday August 6 and 13-Acrylic Painting for Kids at 3:30. NOTE: This is a time change. Ms. Elen has everything they need for creating their masterpieces!

2nd and 4th Monday-Make and Take at 1:00. This fun activity is available on the 12th and 26th. Everything is furnished for these projects as well.

The one-time events look like this:

NOTE: You must register for these special classes by calling the library at 228-255-4800. Space is limited, so call now!

Penny's Watercolor Botanical Painting-Saturday, August 10 at 10:00. Enrollment is limited.

Adult Master Art Class- This class will meet from 1-4 each Wednesday for four weeks beginning on Wednesday, August 28. Penny Crawford will teach the class and enrollment is limited to 10 people.

See you at the library!

DIAMONDHEAD VFW POST 2880/ BSA TROOP 210

CONDUCT FLAG DAY RETIREMENT CEREMONY AND INDEPENDENCE DAY COLOR GUARD

By Michael Burke

On Flag Day 2024, the Veterans of Foreign Wars (VFW) Post 2880 of Diamondhead, Mississippi, and the Scouts, BSA Troop 210 joined forces for a solemn flag retirement ceremony. The event took place at Twin Lakes Pavilion, where all 554 United States flags collected from the Diamondhead flag drop were respectfully retired. This enduring partnership between the VFW and the BSA has been ongoing for many years, ensuring the tradition of



Diamondhead VFW Post 2880/ BSA Troop 210 Conduct Flag Day Retirement Ceremony and Independence Day Color Guard

• See FLAG Page 4



Magdalene House

Women's Community Support Center, located off Hwy. 603 in Bay St. Louis, is a non-profit faith based Christian organization committed to helping women, from all walks of life, obtain job and life skills needed to find meaningful employment and break the cycle of poverty.

Our **Gulf Coast Christian Women's Job Corps** free employment skills program is offered on an eight (8) week schedule. The classes include Bible Study, Career Skills, Relationship Building, Conflict Resolution, Computer Skills, Money Management, Parenting and Anger Management classes.

Our Daytime classes will be held on Monday and Tuesday. We will offer an Evening class on Mondays 5-8pm. Our Anger Management class is on Tuesdays 9-10am. A Parenting class is offered on Wednesdays from 9-11am.

For students and instructors, please call soon as possible at 228-586-3510. Registration is available now. Most classes have open enrollment at all times.

We are in need of female volunteer instructors for all class schedules daytime and nighttime. Training is available at our facility for both our **Gulf Coast Christian Women's Job Corps** and **Hancock County Correctional Facility** instructor courses. We are now accepting inquiries for all positions and can provide training at your convenience.

To learn more about our mission and to offer your time or financial support, please visit our website at www.womenscommunitysupport.org or call 228-586-3510.

• FLAG

Continued from Page 3

retiring worn and soiled American flags continues with honor. Each flag, while displayed, represented the values of our country. Veterans like Mr. Dave Frank, a Diamondhead VFW member, passed on the importance of these American flags to the Scouts during the ceremony.

Community members are encouraged to contribute to this cause by depositing their worn USA flags in the big red flag drop box located in front of the Diamondhead Petsense, under the awning. The VFW and BSA will continue this tradition next year. Your contributions of soiled or worn flags are greatly appreciated for future ceremonies, ensuring that each flag is retired with the respect deserved.

The VFW Post meets monthly at The Club in Diamondhead on the First Wednesday of each month at 6 PM.

The BSA Boy and Girl Troops meet weekly at Diamondhead Methodist Church each Tuesday at 6:30 PM.



VFW Post 2880 Commander Doug Maxwell and BSA T210 Scouts Trip W., James J. and Cooper B. presented Colors at the opening of the 3rd Annual Diamondhead Independence Day Fireworks Celebration on the South Side June 29th 2024.





RE/MAX[®] COAST DELTA REALTY

228-255-2600 | www.coastdeltarealty.com | 5400 Indian Hill Blvd. • Diamondhead, MS 39525



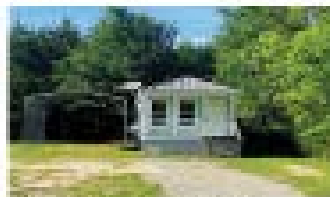
766 LANE STREET, DIAMONDHEAD-
3 Bedrooms/ 2 Bathroom \$249,000



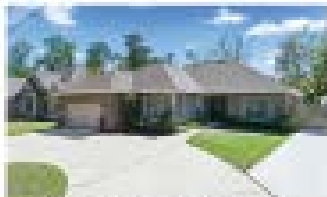
11140 BEAR CLIFF DRIVE, PICAYUNE-
4 Bedrooms/ 2 Bathroom \$135,000



242 LAKESIDE VILLA UNIT 4H, DIAMONDHEAD-
1 Bedroom/ 1 Bathroom \$97,800



7244 FIRETOWER ROAD, KILN-
2 Bedrooms/ 1 Bathroom \$139,000



6450 KALIPERONA WAY, DIAMONDHEAD-
4 Bedrooms/ 3 Bathroom \$369,000



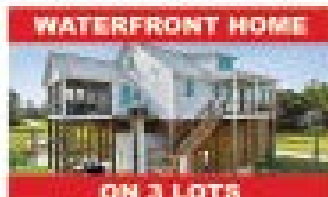
4350 LEISURE TIME DRIVE, DIAMONDHEAD-
Commercial \$325,000



13611 W ECHO DRIVE, GULFPORT-
3 Bedrooms/ 2 Bathroom \$299,000



26 HUBERT LADNER ROAD, POPLARVILLE-
3 Bedrooms/ 2 Bathroom \$221,000



2422 HAW STREET, DIAMONDHEAD-
4 Bedrooms/ 3 and a half Bathroom \$699,000



LAND / LISTINGS

PLENTY OF LAND
for your dream home

• 40 ACRES ON W DUBUISSON ROAD
Pass Christian • \$520,000

• 40 ACRES ON JORDAN ROAD
Perkinston • \$390,000





**COLDWELL
BANKER
ALFONSO
REALTY, INC.**

228-467-0244



JOHN HALL

ABR, GRI, e-PRO

Diamondhead Resident since 1995

Call SELL phone:

(228) 669-6111

Also licensed in Alabama for
Orange Beach & Gulf Shores

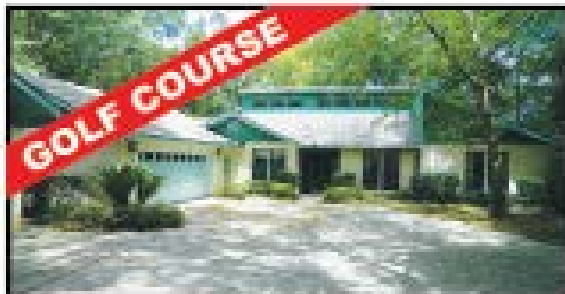
"CALL HALL"



63730 DIAMONDHEAD DR. NORTH
3 BD, 2 BA, 1,866 SF, \$295,000



6612 HALE CT
3 BD, 2 1/2 BA, 2,338 SF, \$329,000



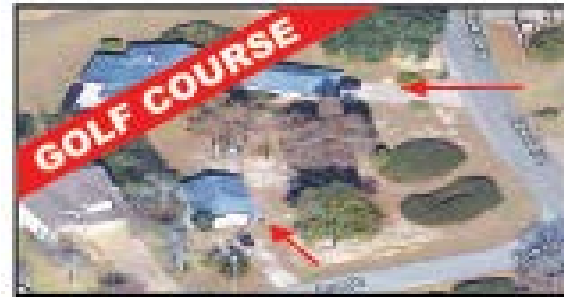
6616 HALE CT
3 BD, 2.5 BA, 2,417 SF, \$349,000



309 HIGHPOINT DR.
2 BD, 2.5 BA, 1,554 SF, \$239,000



7730 MANINI WAY
3 BD, 2 1/2 BA, 3,267 SF, \$400,000.



7824 ALAWAI AVE.
3 BD, 2 BA, 2,734 SF, with 680 SF guesthouse, \$385,000

CALL ME TO DISCUSS LISTING YOUR HOME!

PEARL PLUMBING

FULLY LICENSED AND INSURED | OWNER- JOHN BOTELER

PROFESSIONAL • RELIABLE • AFFORDABLE

SERVING ST. TAMMANY; HANCOCK, PEARL RIVER, AND HARRISON COUNTIES



- **PLUMBING REPAIRS**
- **PLUMBING INSTALLATIONS**
- **WATER HEATERS**
- **DRAIN CLEANING**
- **VIDEO INSPECTIONS**

LICENSE NUMBERS:
LMP # 7564 AND MS R21797



CALL OR TEXT • 601-336-3003 | 985-837-2059

• CHURCHES

ST. THOMAS EPISCOPAL CHURCH

5303 Diamondhead Cir
Diamondhead, MS 39525-3203
(228) 255-9213
mail@stthomasdiamondhead.org
WORSHIP TIMES
Sunday 8:00 a.m. Holy Eucharist
Sunday 10:00 a.m. Holy Eucharist

DIAMONDHEAD COMMUNITY CHURCH

5301 Diamondhead Circle
(288) 255-5556

Weekly Schedule SUNDAY

Worship – 10:00 a.m.
Lifeline Discipleship Classes for all ages: 9 a.m.
Adult Christian Education Classes: 9 a.m.
DISCIPLESHIP Group: 5:00 p.m.
TUESDAY
GriefShare -- Class starts Aug. 13 at 2 p.m. Contact the office to register.

WEDNESDAY

Choir Rehearsal -- 5:30 p.m.

Attention Parents of Pre-Schoolers

Little School is taking 2024-2025 registrations. After the 2024 summer break Little School will open on Thursday, August 1. Little School hours are 9 a.m.-12 p.m., Mon – Fri.

DIAMONDHEAD METHODIST CHURCH A Global Methodist Church

5305 Norma Drive
Diamondhead, MS 39525
Office: 228-255-6888
Email: office@diamondheadmethodistchurch.com
Website: www.diamondheadmethodistchurch.com
Facebook: Diamondhead Methodist Church
Pastor: Dr. Dwight Ramsey
Sunday: 10:00 a.m. Worship and Kid's Zone
9:00 a.m. Sunday School
Tuesday 8:00 a.m. men's snacks and prayers.
Thursday Bible Study: 4 to 5:30 p.m.

MOST HOLY TRINITY CATHOLIC CHURCH

9062 Kiln Delisle Road
Pass Christian, MS 39571
228-255-1294
Email: admin@mhtcatholic.org
Website: http://mhtcatholic.org
Mass Times:

Monday – Friday: 8:00 a.m.
Saturday: 4:00 & 6:00 p.m.
Sunday: 7:30, 9:00, 11:00 a.m. & 7:00 p.m.
Reconciliation: Saturday 3:00-3:30 p.m., or by appointment

JACOB'S WELL BAPTIST CHURCH

29554 Vic Faye Road, Pass Christian, MS 39571; 228-255-2555, jacobswellms@aol.com
Worship times on Sundays: 8:45 a.m. Worship, 10 a.m. Sunday School, and 11 a.m. Worship

ANNUNCIATION CATHOLIC CHURCH

5370 Kiln-DeLisle Rd. Kiln, MS 39556
(228)255-1800 www.annunciationkiln.com
Masses: Saturday Vigil 4:00 p.m.; Sunday 8:00 a.m. and 10:30 a.m.; Weekday 8:00 a.m. (Chapel)
Sacrament of Reconciliation: Saturday 3 p.m. to 3:45 p.m.; Sunday 9:45 a.m. to 10:15 a.m. and other times by appointment.
Adoration: Tuesday 8:30 a.m. to 8:00 p.m.; Friday 8:30 a.m. to 9:30 a.m.

LUTHERAN CHURCH OF THE PINES

309 Highway 90
Waveland, MS. 39576
228-467-6771
Pastor Brock Cain
Services every Sunday morning are at 10:00 a.m.
Sunday School for children and adults at 9:00 a.m.
Every Wednesday we offer Bible study at 1 p.m.

OLD TOWN PRESBYTERIAN CHURCH, PCUSA

114 Ulman Ave.
Bay St. Louis, MS 39520
Pastor: Rev. Richard T. Gillespie, Th.D.
(256)443-4100
Worship, 10 a.m.
Adult Sunday School, 9 a.m.

THE CHURCH AT 112

Romans 1:12 -- "When we get together, I want to encourage you in your faith, but I also want to be encouraged by yours." (NLT)
17077 Kapalama Dr., Suite B
Pass Christian, MS 39571
Pastor: James Reardon
Email: jreardon112@gmail.com
Facebook: C112 The Church at

112
Our mission is to help encourage the people of Diamondhead and the surrounding areas towards faith in Christ. Our desire is to

minister to both the unchurched (those with little or no church experience) and those we call the de-churched (individuals who have been hurt in the past or dis-

illusioned by the actions of some within a church setting). Join us in worship -- Sunday at 10 a.m.

GRIEF SUPPORT

Help for the pain of losing a loved one

If you have lost someone you love, you know just how painful and unbearable the feelings are. If you are still suffering the pain of loss or know someone who is going through this, there is help. There is a 6-week Grief Support Group that will be meeting again beginning September 4, 2024. If the loss was recent, or even sometime in the past, it can be a helpful way to deal with the lingering emptiness, loneliness, and host of other feelings that accompany death.

Grief is a normal human experience. If you are in a relationship in your life, whether it is marital, parent/child, sibling, friendship, or committed partnership, you will experience grief if one of the persons die. Grief expresses itself in a vast number of ways. It may be very clear that you are in pain from the loss. It can affect sleep, appetite, work, mood, thinking, productivity, or other relationships. If you find yourself "off" since your loss, that may be the way you are doing grief.

Regardless, there are ways to soften the pain, and one of the most effective ways is to share the loss with others who are also going through grief. A grief support group provides a safe, confidential place to share individual memories, thoughts, and feelings with others who understand your pain. As you listen to others in the group talk about their loss, it also has a healing effect for each member of the group.

Please consider joining this group that is being offered in the Diamondhead community. It is facilitated by experienced counselors who want to help you process your loss and move forward in a healthy and positive way.

The group will meet at St. Thomas Episcopal Church at 5303 Diamondhead Circle, across from the Diamondhead Community Center. They begin at 2:00PM on Wednesday, September 4th and will last for approximately an hour. Sessions are free to the participants. You can contact Cornelia (228.363.2211) or St. Thomas Episcopal Church (228.255.9213) for any questions.

• CLUBS

DIAMONDHEAD WOMENS CLUB

We are working diligently thru hard work, creativity and friendship to continue our efforts to 'Support and Celebrate Women'. Please join us at our next meeting in September, for our annual Meet and Greet. It will be held on Wednesday, September 4th at 11a.m. in the Diamondhead Community Center. We will have Bubbly, Salad Bar and Desert. In April, The Diamondhead Women's Club held The Glitz fundraiser for Pink Heart Funds. It was an amazing night and resulted in the presentation of \$18,800.00 raised for local cancer patients. We will be collecting the dues for the new year of \$20.00 along with taking photos for our directory. The theme for our DHWC is Supporting & Celebrating Women. The objective of this club shall be to promote an informed and active interest in the civic, social and moral welfare of the community; to serve the community through the dedication of time and ener-

gy for worthy purposes; and to undertake and complete one or more charitable, humanitarian or social welfare projects each year. Our meetings (we do not meet in June, July, or August), are held the first Wednesday of each month from September to May, beginning at 11:00 a.m. at the Diamondhead Country Club, Emerald Ballroom. Membership is \$20.00 and is open to all women. Dates and times for upcoming meeting, events and fundraisers to be announced in upcoming issues of this publication and you can follow us on Facebook. For more information about the Diamondhead Women's Club or any of our events, please contact the DHWC President, Rachel Haskins @ 504-400-3013.

-- By Robin Gaines

LADIES BRIDGE PARTY

The date for our August Bridge Party is Friday 23, 2024 at the Country Club. Our arrival time is 9:15 and we shall begin playing bridge at 9:30. If you have

any questions regarding Ladies Bridge Party, please contact Terre Settle at 255-9892 or Gay Young at 255-1528.

The winners of the June Party were Liz Leonard in First Place and Pat Burgoyne in Second Place. Our Special Prize went to Jerry Ingraham.

-- By Gay Young

THURSDAY MORNING LINE DANCERS

Lessons and dancing, led by Molly, will be held from 10:00 -11:00 am on THURSDAYS at the DIAMONDHEAD COMMUNITY CENTER. New solid flooring and a huge space. Plenty of room for social distancing.

Everyone is welcome.

Great exercise, great fun, \$1 room rental per person, per session.

FOR DETAILS OR CANCELLATIONS, see our web site:

<https://sites.google.com/site/get-moving12345678/>

-- By Molly Kooney

P.E.O. CHAPTER T INITIATION

P.E.O. Chapter T welcomed 5 new sisters since March 1, 2024. Our new sisters are Sharon Devine, Tracy Ward, Cheryl Saak, and Pat Kleinekordt.

-- By Dinah Knobloch

WINE CLUB

The Diamondhead Wine Club is dedicated to the exploration and enjoyment of wine. At Each monthly tasting, we sample at least six different wines and learn a little about their history and origins. The Club is open to any who are interested in enjoying and learning about wine.

Join us at our upcoming tastings.

THURSDAY, SEPTEMBER 19 - SOUTH AFRICAN WINES - 7 P.M. AT THE CLUB

Suzaan Laing, owner of South to South Wine Importers, will be with us again to present a lineup of South African wines from her ever expanding portfolio. If



Pictured here (L to R) Victoria Magers (Glitz chairperson), Marilyn Lott (past president), Brenda Long (President of Pink Heart Funds) and Rachel Haskins (President of Diamondhead Women's Club)



Victoria Magers hand delivered the \$10,000.00 check to Gulf Coast Center of Nonviolence. This donation was the proceeds from the raffle "Year of Divine Dining". We thank everyone that purchased a ticket/s for this well needed donation.)

• CLUBS

you've been to one of our previous South African nights you are already aware they produce many outstanding wines. I hope you'll join us to see what Suzaan has in store for us on this visit.

Cost is \$45 for DWC members and \$50 for guests. Please make your reservations by mailing your check payable to DWC to: P.O. Box 6523 or by emailing Lou at louertel@aol.com or Marshall at mekygs@mail.com.

THURSDAY, OCTOBER 7 — THE REST OF CALIFORNIA — 7 P.M. AT THE CLUB

We all know about Napa and Sonoma and we've tasted many fine wines from the two counties. But what about the rest of California? The Central Coast from Santa Barbara to Monterey is home to numerous AVAs and produces many outstanding wines. We've sampled some from the Santa Lucia Highlands and, of course, Paso Rablo. Just outside of San Diego is Temecula, another area that produces some excellent wines. And let's not forget Mendocino, Lodi, and Amador County in the

Sierra Foothills. What will we find? Come join us and find out. Cost is \$45 for DWC members and \$50 for guests. Please make your reservations by mailing your check payable to DWC to: P.O. Box 6523 or by emailing Lou at louertel@aol.com or Marshall at mekygs@mail.com.

THURSDAY, NOVEMBER 21 — THANKSGIVING IN THE SOUTH — 7 P.M. AT THE CLUB

We do mean South, as in the Southern Hemisphere. We will sample wines from Australia and New Zealand for sure and possibly Chile and Argentina. As you know, all of these countries produce excellent wines. Let's see what we can find this year! Cost is \$45 for DWC members and \$50 for guests. Please make your reservations by mailing your check payable to DWC to: P.O. Box 6523 or by emailing Lou at louertel@aol.com or Marshall at mekygs@mail.com.

-- By Marshall Kyger



The winners of the Ladies Bridge June Party were Liz Leonard in First Place and Pat Burgoyne in Second Place.



Diamondhead Lions Club shares proceeds from the 4th Annual Diamondhead Lions Club Dog Show with the Hancock County Animal Shelter.



New initiate Tracy Baker with P.E.O. Chapter T sisters

DIAMONDHEAD LIONS CLUB

Lion Pat Kesler is shown presenting a check representing 50% of

the proceeds from the dog show to Shane Wyman of the shelter. Other proceeds from the dog show will be used to support other charity programs of the Lions Club,

HEALTH INSURANCE

MEDICARE SPECIALISTS

Lisa Ladner Agency, LLC

5402 Aloha Dr. Suite C | Diamondhead, MS 39525

Advantage Plans • Medigap Plans
Dental & Vision • Affordable Care Act



Lisa Ladner
228-424-6125



Brittney Ladner King
228-343-2422

• CLUBS

including Leader Dogs for the Blind, community and state charity needs, and contributions to Lions Club International Foundation (LCIF) which helps with disaster support around the world.

Are you looking for a way to contribute time and effort to serve the local community and around the world, without leaving home? Join with 1.5 million others of the Lions Clubs International and the Diamondhead Lions Club! Our slogan is "We Serve".

Learn more about the Lions Club – come to a meeting to hear about our plans for the rest of this year. Be our guest at our next Club meeting on August 16 at 11:30 AM in the Diamondhead Country

Club. Contact Lion Dwain Simpson at 228-363-2557 or dwain-simpson@aol.com for more information.

-- By Dr. Dwain Simpson

DIAMONDHEAD DEMOCRATS, PROGRESSIVES, INDEPENDENTS ALLIANCE

The Diamondhead Democrats, Progressives, Independents Alliance (DDPIA) will hold its August meeting on Thursday, August 15 at 10:00 a.m. at St. Thomas Episcopal Church located at 5303 Diamondhead Circle. Meet and greet time is followed by a business

meeting and a featured speaker. Past speakers include the Hancock County Library Director, the Hancock County Schools Superintendent, the Diamondhead Mayor, the Mississippi Today gardening columnist, and many more informative speakers. DDPIA is a fun and inclusive group that welcomes you to join us.

-- By Gerry Gilbert

ROTARY CLUB OF CENTRAL HANCOCK

Rotarians enjoyed having David Tyler from Skydweller Aero! It's amazing how technology has allowed the development of such an



David Tyler from Skydweller Aero. aircraft!!

Hosted By **33rd ANNUAL GULF COAST RUNNING CLUB CITY OF DIAMONDHEAD 5K WALK TO DA FEET HUNGER 5K & 1 MILE RACE** SATURDAY, AUGUST 17, 2024
7 a.m. Check-in, 8 a.m. Start of the 5K, 8:45 a.m. start of the 1 Mile
Start & Finish at the East Recreation Pool in Diamondhead.
For more information, call Leonard Vergunst (228) 380-7037.

GENERAL INFORMATION
\$20.00 for GCRC Members by August 12
\$22.00 for Non-Members by August 12
\$15.00 for all children (age 12 and under) in the One Mile
Late Registration - \$25.00 5K, \$15.00 Children One Mile
7:00-7:45 a.m. for all on race day.
Register online at www.raceroster.com

COURSE
USATF Certified MS22018MS. Hilly out and back challenge. Accurately measured, 2 miles from the Diamondhead entrance on Diamondhead Drive East starting at the East Rec. Pool Facility. Kentwood Springs water will be on the racecourse.

POST RACE
After the race there will be drinks, fruit, and various food and snack items.

DIRECTIONS: Take Exit 16 off Interstate 10. Head North past the stop sign and take the first right at the traffic circle onto Diamondhead Drive East. Continue down Diamondhead Drive East for 2 miles and East Rec will be on your right.

For additional registration forms and race results, check our Web site: WWW.GULFCOASTRUNNINGCLUB.ORG

2024 DIAMONDHEAD 5-K RUN

CHECK ONE
S-K Run _____
S-K Racewalker _____

T-SHIRT SIZES
Small _____
Large _____
Child Medium _____
(Checks are non-refundable)

Male checks payable to Gulf Coast Running Club
P.O. Drawer 2569
Gulfport, MS 39505

REGISTER ONLINE AT www.raceroster.com

Name _____
Address _____
City _____ State _____ Zip _____ Sex _____ Age on Race Day _____
Email _____
Telephone _____
Date of Birth _____

I know that running a road race is a potentially hazardous activity. I should not enter and run unless I am medically able and properly trained. I agree to abide by any decision of a race official relative to my ability to safely complete the run. I assume all risks associated with running in this event including, but not limited to, falls, contact with other participants, the effects of the weather, including heat and/or humidity, traffic, and the conditions of the road, all such risks being known and appreciated by me. Having read this waiver and in consideration of your accepting my entry, I, for myself and anyone entitled to act on my behalf, waive and release the Gulf Coast Running Club, Inc., and all sponsors, their representatives and successors from all claims or liabilities of any kind arising out of my participating in this event. I grant permission to all of the foregoing to use any photographs, motion pictures, recordings or any other record of this event for any legitimate purpose.

G.C.R.C. MEMBER: YES NO
Date _____ Signature (Parent or Guardian if under 18) _____

COASTAL CRAFTS & Embroidery

CUSTOM EMBROIDERY & MULTI VENDOR MARKET PLACE

- DESIGNS BY SALLY
- MARY'S GLASSWORKS
- D.H. DESIGNS
- SEW MUCH LOVE
- BAY CANDLE CO.
- MK ART
- RIP A LIP FISHWEAR
- Donna's Sweet Treats

210 HWY 90 * UNIT C (Next to The Lunch Box)
Bay St. Louis * 228-216-5970
Tuesday - Friday 10a-5:30p & Saturday 10a-3p

• CLUBS



Fellow Rotarians enjoyed their guest speaker, Kevin Cuttil from Crusaders for Veterans! Such a great program for a great cause!!



PEO (Philanthropic Education Organization) Chapter U is celebrating two new members: Alison Kingston and Stephanie Johnson.



Diamondhead Chapter U PEO(Philanthropic Education Organization) donates \$500 to the Gulf Coast Center for Nonviolence. Cheryl Doyle, Chapter U Recording Secretary, delivers the donation to the staff/director of the Center. (Cheryl is r of the sign).

Our guest speaker on July 25th will be our district Governor, Sam Walley! Please join us and come meet her!! She's a fascinating woman!!

We are in need of sponsors for our Walk to Da-feet hunger walk and 5k which will be August 17. Thanks to all who have sponsored so

far!
Service above Self!!
-- By Virginia Boyle

P.E.O CHAPTER U

PEO (Philanthropic

Education Organization) Chapter U is celebrating two new members: Alison Kingston and Stephanie Johnson. Diamondhead Chap-

ter U PEO(Philanthropic Education Organization) donates \$500 to the Gulf Coast Center for Nonviolence. Cheryl Doyle, Chapter U

Recording Secretary, delivers the donation to the staff/director of the Center. (Cheryl is r of the sign).

-- By Kathryn Lewis



**Diamondhead
News**

**STAY IN
the KNOW**

**TO ADVERTISE,
PLEASE CALL JANET @
601.850.3939**

• SPORTS

DIAMONDHEAD GOLF BY CHRIS ALTESE, PGA

Thank you to our golf operations team! We are all so appreciative for what you do for our members and guests. Our cart attendants, player assistants, golf shop attendants, and golf professionals all have put in many hours this year to insure a wonderful golf experience for all to enjoy. These guys and gals make it look easier than it really is and for that reason it sometimes does not get the notice they deserve. If you see a member of our golf operations team, please join us in letting them know how much you appreciate them and all they do for us.

Our junior golf development clinics and camps continue to be well attended and are happening year-round. Our golf professional staff and academy instructors do a great job introducing the game to these youth golfers. It is very exciting to watch The Club at Diamondhead grow the game. If you ever wonder about the future of golf just come watch how much fun these juniors are having while learning this sport that you can play for a lifetime. Even

though these juniors are learning at an early age it is never too late to take up the game. Let us know if we can help you pursue learning how to play.

The road to Augusta goes through Diamondhead again this Summer. Diamondhead continues to grow on the junior golf scene and was selected by the Gulf States PGA to host a Local Qualifier on Thursday, July 11th, and the Sub-Regional Championship on Saturday, August 17th, for the 2024-2025 Drive, Chip, and Putt Championship. We are excited and proud to be part of this incredible event conducted annually by the Gulf States PGA, USGA, Masters, and the PGA of America. We are one of about 350 local qualifying sites across the country.

Congratulations to our winners in the Magnolia Classic! It was a fun weekend celebrating and competing. 50 teams took to the links on July 6th and 7th. This year's overall champions...Wayne and Jame Fuselier. Wayne and James shot 60 on the Cardinal and 64 on the Pine for a solid -20 performance to take the ti-

tle. The teams of Tom Begley/ Steve Begley and Ron Yager/ Peter Yager tied for 1st place in the Southern Magnolia Flight at -10. Ernie Lee/Dwayne Braud won the Sweetbay Flight with -9.

The Big Leaf Magnolia Flight was won by the team of John Brdecka/Michael Gries at -3. Larry Osburn/Bill Blackwood won the Yellowbird Magnolia Flight at -2. In the Lazy Magnolia Flight, our



USA Limited Srixon Stand Bag Raffle Winner Fred Wiles.



2024 Magnolia Classic Overall Champions Wayne and James Fuselier.

YOUR HOMETOWN HOME & AUTO TEAM

"When you go with State Farm", you get neighborly service and a local agent — all for a surprisingly great rate. Give me a call and get a quote today.

Like a good neighbor, State Farm is there.®



Kelly Cannon, Agent
137 Highway 90
Waveland, MS 39576
Box 238-467-3828
kellycannoncj3d@statefarm.com

State Farm Mutual Automobile Insurance Company
State Farm Indemnity Company
State Farm Financial Guaranty Company
State Farm Casualty Insurance Company
Bloomington, IL

State Farm County Mutual Insurance Company of Texas
State Farm Agents
Kilmer Station, TX

State Farm Fidelity Insurance Company
Winter Haven, FL

©2024

 **State Farm**

• SPORTS

champions were Ronnie Austing/
Frank Morrow with a score of +4.
A great time was had by all!

The Women's State Amateur
Championship, conducted by
the Mississippi Golf Association,
was contested on the Gulf Coast
in early July. Once again, Dia-
mondhead has one of the stron-
gest representations at this event
of any golf facility in our area.
We look forward to following our
Diamondhead ladies in this state
championship and wish them the
best in the competition!

Even though we have eliminated
the "No Carts" signs and the need
for a handicap flag for golf carts
on the golf course, we still have
rules that apply to all golf carts.
Golfers must keep their carts a
minimum of 30 yards away from
greens/greens surrounds (bun-
kers, mounds, etc.) The handi-
cap decal, for those that may still
have one, does not allow players
to drive off the cart path when
we are cart path only. Also, carts
must return to the cart path side
of the hole being played. Please
do not go around the side of the
green opposite of the cart path.
We appreciate everyone's cooper-
ation.

On a course maintenance note,
please make sure that you are
keeping all four tires of your golf
carts on the cart path around all
greens and tees. A common ten-
dency is to pull off closer to the
green or tee so others can drive
around. We ask that you park
with all four tires on the cart
path and then others can drive
around the outside if needing to
pass. This will put all wear and
tear from the cart traffic outside
the cart path and will help us tre-
mendously with turf conditions
on the golf course. Next time you
are out pay attention to how good
the overall turf conditions are and
then take notice of the turf condi-

tions adjacent to the most played
tees and common pull off areas
around the greens. We can do our
part to stop this and help our golf
courses look even better!

Please be sure to post your scores
in GHIN so that you have an accu-
rate handicap index. Make sure if
you play, you post. Any questions
concerning your golf handicap can
be directed to one of our Handicap
Committee members. Our new
Golf Handicap Committee mem-
bers for 2024-2026 are Brigitte
Becker, Donald Davidson, Tom
Garriga, Tom Warren, and Fred
Wiles.

Upcoming Events...

7/27 Mini Shaka Junior Club
Championship

8/17 Drive, Chip, & Putt Subre-
gional Qualifier

8/18 US Kids Golf Local Tour
Event

8/24 DMGA Play Day

8/26 Hancock Hawks High School
Golf Invitational

8/30-9/1 USKG Gulf Coast State
Invitational

9/6-9/8 Member-Member

9/11 Gulf Coast Women's Golf As-
sociation

9/14-9/15 GolfWeek Am Tour

9/27-9/29 Slavic Invitational

Other Important Dates...

10/5-10/6 Diamondhead CP Four
Ball

10/10 Play for Pink

10/11-10/12 Wheel of Misfortune

10/14 New Orleans Golf Associa-
tion

10/19 Fall Festival Scramble
Classic

10/21 USGA Four Ball Champi-
onship Qualifier

10/26-10/27 Shaka Club Champi-
onship

Please be sure to fix two ball marks
and fill two divots every hole...any
two will do! It's your golf course
so let's take care of it! We look for-
ward to seeing you "PLAY MORE
GOLF." Let's all get out and en-

joy our beautiful golf courses and
practice facilities. As always, let
us know how we can help.

DWGAN GOLFING NEWS FROM JUNE 2024 BY SHIRLEY HALTERMAN

As occasionally happens, on Tues-
day, June 4th, we had assigned
tee times. We played a game
called, Whack & Hack, on the
front nine of our Cardinal Course.
We fielded five foursomes and one
threesome starting at 9:00 a.m.
and going to 9:45 a.m. This is a
mixed team game where you take
the highest and lowest net score
on each hole. Everyone plays
their own ball. And, our winning
teams were: First Place Team =
Monica Jordan, Dinah Knobloch,
Kathie Pierson and Pauline Sing-
er — Second Place = Sylvia Cor-
ban, Tracey Garriga, Lisa Pretzel
and Nancy Sislow — and in Third
Place = Nancy Barker, Cathy Ge-
sell and Therese Mauterer plus a
ghost. We kept track of our putts
and Toni Rossol came with the
lowest (14) followed closely by
Nancy Sislow (16). Appears those
gals had hot putters that morn-
ing.

Each year due to our Diamond-
head name we play an Aloha

Tournament. This year 25 of our
gals turned out to play the back
of our Cardinal Course. As well
as our various flight winners one,
gal is awarded the Aloha Cham-
pionship. This year based on her
lowest net score, Janice Murray
was crowned Champion with a
Net Score of 34. Great golfing
Janice! Since our gals are closely
matched you will frequently see
the notation "Score Card Play-
off". Such was the case in our
First Flight where in just such



**Aloha Tournament Winner Janice
Murray.**



DWGAN Aloha Tournament.

• SPORTS

a playoff, Judy Tauzin came in first with Nancy Sislow following right behind. Judy Amox came in third in that flight. In the Second Flight also posting a scorecard playoff first place went to Nancy Barker, with Margaret Sherwood right behind and Susie Fontenot placing third. While Janice Murray's score gave her the Championship, Kim Knight and Kathy Jones were right behind in another playoff for the Third Flight. With the help of our Clubhouse we were able to give awards to members of our Fourth Flight. And, those gals were: Pauline Singer in 1st Place, Dinah Knobloch in 2nd Place and Mary Murray in 3rd place. During this competition we also give awards for Low Putts and Closest-to-the-Pin in each Flight. Nancy Sislow garnered the Low Putts honor in the First Flight, Brigitte Becker in the Second Flight, Kim Knight in the Third Flight and Dinah Knobloch in Flight Four. No one came closest to the pin in Flight One but Monica Jordan took honors with her second shot in Flight Two, Shirley Halterman also in her second shot in Flight Three

and Pauline Singer in one shot in Flight Four. Brigitte Becker posted a Chip-In on Hole #15 and Nancy Barker follow suit on Hole #18. Our Tournament celebration continued with a delightful lunch delivered by our Country Club Kitchen.

When Tuesday, June 14th, arrived high temperatures kept many of our gals away and only 8 brave souls came out to play Golf Poker on the back nine of the Cardinal. Because only 8 gals played, we decided to post all the winning hands: Anne Payne scored four 4s, Nancy Barker also posted four 4s, Therese Mauterer had a full house, Nancy Sislow had a Straight, Kim Knight scored three 3s, Pattie Blackwood had a pair of 5s, while Brigitte Becker had a pair of 4s, and Edi Baerson posted a pair of 3s. This time Nancy Sislow scored a Chip-in on Hole #15. It is fun way to play. For the final Tuesday of June we played a Shamble. During this competition, each team member tees off from the Red Tees and the best drive is taken. After that shot each player plays her own ball. This is repeated on each of

the following holes. Twenty-eight gals turned out on a very warm and breezy day to play. First Place honors went to the team of Pattie Blackwood, Judi Brannan, Marilyn Galus and Kim Knight. The Second Place team was made up of Ladonna Brown, Cathy Gesell, Pauline Singer and Judy Tauzin. While Third Place was grabbed by Edith Baerson, Brigitte Becker, Therese Mauterer and Lisa Pretzel. Not to be left out, Dinah Knobloch (Hole #8) and Therese Mauterer (Hole #1) scored Chip-Ins while Edith Baerson (Hole #6) and Anne Payne (Hole #6) posted Birdies. Good job gals!

During our hot summer weather, be sure to stay hydrated and cool; and we will continue to keep you apprised of our golfing adventures.

tures.

DWGA BY COLLEEN JONES

June 6th we had rain and no play. June 13th we had our Pal's Tournament and lunch. We played on the Cardinal Course and it was the best net ball for the team. The First Flight winners were Tiffany Webb and Jill Wiles. Second place winners were Cassandra Godbold and Liz Bell. Second Flight winners were Rosa Humphrey and Betsy Lyons and second place winners were Dinah Kennedy and Kim Knight. Closest to the Pin winners were Rosa Humphrey on hole #4, Kathy Pierson on hole #7, Cassandra Godbold on hole #13 and Teresa Ertle on hole #17. Birdies were had by Cathy



DWGA PalFlight1 - Tiffany Webb, Jill Wiles, Cassandra Godbold, Liz Bell.

 An advertisement for Coffee Culture. The background is a light beige color with scattered coffee beans in the upper right corner. In the center, there is a white coffee cup with a brown sleeve and a lid, sitting on a wooden tray next to a chocolate-glazed donut. The text is arranged as follows:

- Top left: *@coffeculture.bsl*
- Center: **START YOUR DAY WITH** followed by *Coffee Culture.* in a cursive font.
- Below that: **DRIVE THRU ONLY**
- Bottom left: Located at 16800 Kapalama Drive in the Back of Diamondhead
- Bottom center: **OPEN DAILY** in a dark brown box.

AUGUST 2024 • THE CLUB AT DIAMONDHEAD NEWS

This year is going by so quickly! Thanks to everyone who attended our Alice in Wonderland Wine Dinner. It was epic! We plan on hosting another one in November. We look forward to seeing you in the Club soon!

TRIVIA WEDNESDAY SPECIAL

It's back again in August! Fuel your brain with our Trivia Plate! Includes Southwest Eggrolls, Chicken Bites, and Mozzarella Sticks. 5:00 – 8:00. \$13. No substitutions. Limited availability. Enjoy this perfect snack combo while you play!

THURSDAY NIGHT HOT DIGGITY DOG ROAD TRIP

Join us every Thursday night in August for our Hot Diggity Dog Road Trip!

- August 1 - Chicago Dog. Nathan's beef hotdog, traditional bun, mustard, sweet relish, tomato slices, peppers, onions, and a dill pickle spear
- August 8 - West Coast Dog. Nathan's beef hotdog, traditional bun, avocado, pico de Gallo cotija cheese, and avocado ranch
- August 15 - The Little Italy. Italian sausage dog, garlic bread bun, marinara, mozzarella, sliced pepperoncini, and crispy pepperoni
- August 22 - Texas Bacon Dog. Bacon-wrapped Nathan's beef hotdog, pretzel bun, sweet jalapeno relish, Texas-style chili, and shredded pepper jack cheese
- August 29 - The Club Dog. Wagyu hotdog, pretzel bun, smokehouse chili, candied bacon, shredded pepper jack cheese, and chipotle sour cream served with Curly Fries. \$13

SATURDAY SUMMER SEAFOOD PLATE

Dive into a seafood feast with our Summer Seafood Plate! This delicious dish will tantalize your taste buds and leave you craving more. Here's what you can look forward to - Half-Pound New Orleans style BBQ Royal Reds and Half Dozen Charbroiled Oysters. Served with French bread. \$25

To maintain the quality and authenticity of the dish, we are not offering substitutions. Limited availability. Dine-in only.

BINGO NIGHT WITH

BINGO NIGHT
With Brigitte & Sylvia

One free card per person.
One additional card per purchase (3 maximum)
No cash entry. No cash prizes

August
13 & 27
6:00 - 7:30

LATITUDE 30
patio and grill

228-255-2918 ext. 3
@ClubatDiamondhead

HOT DIGGITY DOG ROAD TRIP!
EVERY THURSDAY NIGHT IN AUGUST
A Symphony of Flavors in Every Bite!

\$13

LATITUDE 30
patio and grill

- August 1 - Chicago Dog. Nathan's beef hotdog, traditional bun, mustard, sweet relish, tomato slices, peppers, onions, and a dill pickle spear
- August 8 - West Coast Dog. Nathan's beef hotdog, traditional bun, avocado, pico de Gallo cotija cheese, and avocado ranch
- August 15 - The Little Italy. Italian sausage dog, garlic bread bun, marinara, mozzarella, sliced pepperoncini, and crispy pepperoni
- August 22 - Texas Bacon Dog. Bacon-wrapped Nathan's beef hotdog, bun, sweet jalapeno relish, Texas-style chili, and shredded pepper jack cheese
- August 29 - The Club Dog. Wagyu hotdog, pretzel bun, smokehouse chili, candied bacon, shredded pepper jack cheese, and chipotle sour cream
Served with Curly Fries. \$13

7600 Country Club Circle, Diamondhead, MS
228-255-2918 ext. 3
ClubatDiamondhead

KARAOKE
Thursday Night

Every Thursday Night
with Ray Walters

6:00 - 10:00

LATITUDE 30
patio and grill

LATITUDE 30
patio and grill

TRIVIA NIGHT

READY TO PLAY?
EVERY WEDNESDAY NIGHT
7:00 - 9:00

TRY OUR TRIVIA PLATE!

5:00 - 8:00. \$13
Southwest Eggrolls
(with avocado-ranch), Chicken Bites (honey mustard), Mozzarella Sticks (marinara). No substitutions. Limited availability.

7600 Country Club Circle
Diamondhead, MS
228-255-2918 ext. 3
@ClubatDiamondhead

BRIGITTE & SYLVIA

Join us on August 13 and August 27 in Latitude 30 for an exciting evening of Bingo! 6:00 – 7:30

TRIVIA WEDNESDAYS

With Ronnie Hammons. Test your knowledge and compete with friends every Wednesday night. 7:00 – 9:00 in Latitude 30.

KARAOKE THURSDAYS

Let your inner superstar shine at our Karaoke nights every Thursday with Ray Walters in Latitude 30! We'll be jamming from 6:00 – 10:00 Live Bands Fridays

End your week on a high note with live music from our featured bands. Check out the lineup:

- August 2 – Witness
- August 9 – Crow the Culprit
- August 16 – Gals and Geezers
- August 23 – Silver City
- August 30 – Tease Me Band

SPECIAL EVENTS**WINE BLENDER EVENT
AUGUST 24**

Blend your own wine! Barry Dodds, a National Wine Educator of Freemark Abbey, and other wine masters will teach you how to blend your own wine during a three-course meal with mingle appetizers.

**THE PATIO ANNIVERSARY PARTY
SEPTEMBER 13**

Join us down the bayou as we celebrate the 4th anniversary of The Patio! We will have a Bayou BBQ Buffet on the Patio from 5:00 – 8:00, with Razzoo playing from 4:00 – 7:00 on the Patio. Inside, Monster Crawfish will be playing in Latitude 30 from 7:00 – 10:00.

**NEW YEAR'S EVE PARTY & \$10,000
DRAWDOWN DECEMBER 31**

Count down the hours until we bid farewell to 2024 and welcome 2025 with us! Tease Me Band will keep you on the dance floor all night when you aren't indulging in our Chef's Buffet & Carving Station. Party favors & champagne toast at midnight. And you might begin 2025 with an extra \$10,000 in your pocket!

AUGUST 2024 • THE CLUB AT DIAMONDHEAD NEWS

*Friday Night
Live
Music*

August 2 - Missy & Ray
August 9 - Crow the Culprit
August 16 - Gals and Geezers
August 23 - Silver City
August 30 - Tease Me

7:00 - 10:00

7600 Country Club Circle
Diamondhead, MS
228-255-2918 ext. 3
@ClubatDiamondhead

LATITUDE 30
patio and grill

SUMMER
Seafood Sampler

Every Saturday night in August!
Half-pound New Orleans-Style BBQ
Royal Reds and Half-Dozen
Charbroiled Oysters.
Served with French bread
\$25
No substitutions. Limited availability. Dine-in only

228-255-2918 ext. 3
@ClubatDiamondhead

THE CLUB
DIAMONDHEAD

**CELEBRATE THE 4TH ANNIVERSARY
OF LATITUDE 30 PATIO!**

SEPTEMBER 13, 2024

Bayou BBQ Buffet on the Patio from 5:00 – 8:00
Razzoo on the Patio from 4:00 – 7:00
Monster Crawfish inside Latitude 30 from 7:00 – 10:00

BAYOU BBQ BUFFET MENU

Crawfish Etouffee	Fried Okra
Chicken & Sausage Jambalaya	Dirty Rice
Gumbo Yaya	Crawfish Cornbread
Turtle Soup	Fried Cabbage
Corn Maque Choux	Fried Catfish
Field Peas	Seafood Sausage & Peppers
Collard Greens	Smothered Frog Legs
Potato Salad	Whole Smoked Alligator
Coleslaw	Smoked Wild Boar
Biloxi Bacon Dip with Crispy Fry Bread	Nutria
Wild Green Salad	Low Country Junk Pot
	Deaux Berry Cobbler
	Nanner Puddin'

\$38 per person. Children 5 - 12 \$22. Children 4 & Under Free
Discount available for POA members in good standing
Wristbands available the night of the party

LATITUDE 30
patio and grill

Save the Date!

**New Year's
Eve Party**
and \$10,000 Drawdown!

DECEMBER, 31 2024

live music | cash bar | party favors
chef's buffet & carving station
party favors | champagne toast at midnight

Music by Tease Me Band

Counting down the hours until we bid farewell
to this year and welcome the new one!

THE CLUB
DIAMONDHEAD

228-255-2918 ext. 3 · @ClubatDiamondhead
www.theclubatdiamondhead.com

• SPORTS

Weber, Kim Knight and Liz Bell had two.

June 20th we played odd holes on the front and even holes on the back on the Pine Course. The First Flight winner was Marta Wald and there was a three-way tie for second place between Jodi Crosby, Liz Austin and Colleen Jones. The Second Flight had a two-way tie for 1st place between Joanne Fried and Dianne Ackerman, second place was Kim Knight. Closest to the pin winners were Jodi Crosby on hole #2, Liz Austin on hole #6, Cathy Gesell on hole #13 and Amy Swint on hole #15. Birdies were had by Marta Wald, Joanne Fried, Joyce Teerling and Jodi Crosby had 2 birdies. Chip-Ins were had by Marta Wald and Patty Hourn.

June 27th we played Mutt and Jeff were only par 3's and par 5's counted. The First Flight had a four-way tie between Marta Wald, Cassandra Godbold, Tiffany Webb, and Liz Austin. Second Flight winner was Terri Woolbright and second place was Judy Tauzin. Closest to the pin winners were Cassandra Godbold

on hole #2, Liz Bell on hole #6, Anne Payne on hole #13 and Tiffany Webb on hole #15. Cassandra Godbold had a birdie. Chip in were had by Pattie Blackwood and Judy Tauzin.

NEWS YOU CAN USE FROM THE DIAMONDHEAD GOLF HANDICAP COMMITTEE BY TOM GARRIGA

The handicap committee is pleased to bring the Diamondhead Golfers who maintain a handicap in the GHIN the first educational article regarding the rules of handicapping. In this article we will explain why we have a handicap committee, its role as well as golfers' responsibilities. We will also cover rules of handicapping in these articles that may come up as you post your scores. The rules of handicapping are part of the World Handicap System (WHS) which also includes the Course Rating System, and they are governed by the USGA (United States Golf Association) and the R&A (Royal and Ancient Golf Club of St Andrews) on a uni-

fied bases throughout the world. We all have experience playing with someone who we suspect may be...hmmm, how to say it... sandbagging? However, let's give those players the benefit of the doubt and attribute it to their lack of understanding of the Rules of Handicapping rather than trying to game the system. In these newsletters we hope to educate our members so we can all enjoy the fair competition that we expect

A Handicap committee is the entity established by a golf club which is responsible for ensuring compliance with the obligations of the golf club under the Rules of handicapping. To meet the definition of a golf club and become authorized to use the World Handicap System a golf club must have a Handicap Committee. If the club does not have a handicap committee, the handicap index of its members will be set to NH (no handicap)

Role of handicap committee

- Protect the integrity of the handicap system in an objective manner.

- Ensure that the parameters enacted are clear and consistent with USGA recommendations

- Audit handicaps with emphasis on Diamondhead events to ensure fairness during the competition

- Provide education to club members as a relates to USG requirements for handicap

Members of the Golf Committee are: Tom Garriga (Chair), Brigitte Becker, Donald Davidson, Tom Warren & Fred Wiles

Golfers' responsibilities in this process include

- Players are expected to post their scores EVERY time they play golf. This includes away scores and 9-hole rounds. The ONLY exception to this rule would be if a player is playing a format that is not postable (ie. Scramble etc...). The Golf Shop is available to guide you on how to post a round if it is not completed, how to post nine-hole scores, what to post if a hole is conceded etc.

- Scores posted are expected to be "adjusted" to the World Handicap system's Net Double Bogey maximum. To assist in the correct posting of scores – it is rec-



DWGA PalFlight2 - Rosa Humphrey, Betsy Lyons, Dinah Kennedy, Kim Knight



DWGA - Odd/Even Winners Jodi Crosby, Liz Austin, Colleen Jones, Marta Wald, Dianne Ackerman, Joanne Fried

• SPORTS

ommended that Diamondhead golfers post scores using the Hole-By-Hole option in the GHIN – this way the system will “adjust” any scores automatically based on your handicap and gross score you enter for any hole.

• Players are expected to try and make the best score they can on Every hole

• All Scores posted are subject to “peer review”. Any player at any time has the right to review the handicap history of any other player. A PEER REVIEW is available by emailing a handicap committee member. This process is anonymous, and the handicap committee will handle the review.

• Scores should be posted within 3 hours of completion of the round played, and always on the day the round is played.

• If preferred lies are in effect the score must still be posted.

Any violation of the spirit of the USGA/WHS should be reported to one of the handicap committee members, Director of Golf, or Head Golf Professional for referral to the committee for action. Resolution of handicap matters is

not the function of the Golf Professional staff but of the Handicap Committee. You can also send an email to: golfhandicapcommittee@DHPOA.org

Now, let’s cover a common topic that comes up frequently as it relates to rules of handicapping.

Rule 3.3 When a hole is started but a player does not hole out – what score do you enter?

There are various circumstances that might result in a player starting a hole but not holing out. For example, when

• The result of the role has already been decided

• A hole has been conceded in match play

• A player’s partner has already posted a better score in a Four Ball format and the player picks up, or

• A player has already reached their “net double bogey” limit on a specific hole

In general, when a player starts a hole but does not hole out for a valid reason the player must record their most likely score or net-double bogey, whichever is lower.

The most likely score should be determined on any hole in accordance with the following guidelines:

• If the ball lies on the putting green, and is less than 5 feet from the hole – add one additional stroke to strokes already taken to get to this point

• If the ball lies between 5 feet and 20 yards from the hole – add 2 -3 additional strokes, depending on the position of the ball, the difficulty of the green and the ability

of the player.

Regarding net double bogey. For newer golfers let’s review how to calculate.

Example: Let’s say you are a 15 handicap. You would then get a stroke on the 15 highest rated holes. The rating of the holes can be found on the score card. Be sure to look for M-handicap or L-handicap as the ranking of the roles is different between men & women. In this example let’s say you are playing hole #1 on



DWGA - Mutt & Jeff Winners Cassandra Godbold, Marta Wald, Liz Austin, Tiffany Webb, Terri Woolbright, Judy Tauzin



11 COSTLY HOME INSPECTION PITFALLS

Free Report reveals what you Need to Know before you list your Hancock County home for sale.





Home Inspection



Free recorded message, avoid talking to anyone
Dial 1-855-729-8380
Enter ID# 1003
MS Gulf Coast
Real Estate Resource

Not intended to solicit buyers or sellers currently under contract. Copyright © 2024



• SPORTS

the pine. In this example both a man and a lady with a 15 handicap would be getting a stroke on this hole (men's handicap is #15 and for Ladies the hole is rated at #3. If these players scored an 8 on this hole – they should adjust their score on the score card to a net 7 or if using the hole-by-hole entry function in GHIN just enter your gross score for the hole into the GHIN and it will adjust the gross score to a net double bogey.

DMGA BY GENE DEMEDICIS

The DMGA welcomed another new member last month. Joe Wilks moved to Diamondhead from Ocala, Florida and joined our group. I encourage anyone new to the area to join our ranks.

We play every Wednesday morning and you must check in by 8 AM to be placed on a team.

Leading money winners for the first six months of 2024 include Kevin West, Dennis Tauzin, AJ Dilley, Erie Hebert, Gene deMedicis, Dennis Laumann, Norman Bowley, Byron Gandy, Val Miller and Dave Barbato.

Closest to the pin winners for this period include George Thibodeaux(8), Sam Lee(5), Billy Stroud(4), Marshall Miller(4), Steve Garcia(4), Byron Gandy(4) and Dennis Laumann(4).

The format for the game on June 19 was Peers Mixed Bag. Finishing first with a score of 9 under par was the team of Kevin West, Percy Payne, Joe Doyle and Daryl Vaught. Three teams tied for

second place, one stroke behind. The team of Gene deMedicis, Don Crosby, Tom Woolbright and Larry Osburn tied with the team of Art Burgoyne, Bill Merina, Jim Shoemaker and Dennis Tauzin and also tied the team of George Thibodeaux, Berni Breen, Fred Wiles and Sam Lee. Daryl Vaught won low individual with a net score of 71.

Closest to the pin winners were Don Crosby, Don Davidson and Sam Lee who won two pins. Closest shot of the day was hit by Sam Lee at 5'3".

In the ABCD Shamble Two Best Ball competition on June 26 the team of Norm Bowley, Marshall Miller, Lee Kormondy and Dennis Tauzin won with a score of 27 under par. Finishing second was the

team of Mike Lindell, Fred Wiles, Dennis Laumann and Chuck Ingraham with a score of 23 under par. Two teams tied for third place with a score of 21 under par. The team of Billy Stroud, Sam Lee, Gene deMedicis and Larry Popovich tied with the team of Don Davidson, John Black, Don Crosby and AJ Dilley.

Closest to the pin winners were Cat Aguda, Mike Cavataio, George Thibodeaux and Norm Bowley. Closest shot of the day was hit by George Thibodeaux at 2'8".

The format for the game on July 3 was Peers Two Best Ball. Finishing in first place was the team of Byron Gandy, Art Burgoyne, Lenny Alphonso and Val Miller with a score of 26 under par. In sec-

ADVANCED TREE SERVICE

BOBCAT
SERVICES

GRAPPLE
TRUCK

DEBRIS
REMOVAL

LAND
CLEARING

STUMP
GRINDING

BUCKET
TRUCK

DEMOLITION

INSURANCE CLAIMS • INSURED

FREE ESTIMATES

MENTION THIS AD AND RECEIVE
10% OFF YOUR ESTIMATE

(228) 236-7717
f

Home & auto. Bundle & save.

Call me for a quote today

Mike Meyers

Agent

835 Highway 90
Bay St. Louis, MS 39520-1630

Bus: 228-467-5011
mike@mikemeyers.us

Availability and amount of discounts and savings vary by state.
State Farm Mutual Automobile Insurance Company, State Farm Indemnity Company, State Farm Fire and Casualty Company
State Farm General Insurance Company, Bloomington, IL
State Farm County Mutual Insurance Company of Texas, State Farm Lloyds, Richardson, TX
State Farm Florida Insurance Company, Winter Haven, FL

• SPORTS

ond place was the team of Ronnie Austin, Gary Hava and AJ Dilley with a score of 21 under par. Two teams tied for third place with a score of 17 under par. The team of Tom Woolbright, Larry Osburn and Lee Kormondy tied with the team of Michael Galvin, Dave Barbato and Paul Yarbrough. Val Miller won low individual with a net score of 63.

Closest to the pin winners were Don Crosby, Dave Barbato and Byron Gandy who won two pins. Closest shot of the day was hit by Don Crosby at 7'2".

In the ABCD Points competition on July 10 two teams tied for first place with a score of minus 6. The team of Berni Breen, Marc Patrick, Art Burgoyne and AJ Dilley tied with the team of George

Thibodeaux, Lee Kormondy and Val Miller. In third place was the team of Norm Bowley, Don Crosby, Chuck Ingraham and Larry Popovich with a score of minus 18. Finishing fourth was the team of Jan Vest, Gene deMedicis, Lenny Alphonso and Calvin Wood with a score of minus 19. Gene deMedicis won low individual with a net score of 67.

Closest to the pin winners were Gene deMedicis, Dave Barbato, Don Crosby and Val Miller. Gene deMedicis tee shot on hole number 2 hit the pin and stopped 11 inches from the hole for the closest shot of the day.

I'll see you on the course.



TREE SERVICES

Call Today To Get a Free Quote!!!

✔ Tree Removal

✔ Tree Clean Up

✔ Stump Grinding

✔ Property Clearing

✔ Debris Removal

✔ Storm Clean Up

✔ And more



Check Us Out

10% Discounts for Military, First Responders and Senior Citizens

• DH MARINA

THE MARINA AT DIAMONDHEAD

SUBMITTED BY
HARBOR MASTER
DIANNE SIMONSON,
WRITTEN BY GINETTE



Ahoy Mates,
Fun and exciting things have been happening at the Marina. The Marina had some graduate students stay at the Marina for a week. Mathew Thompson, a Marina tenant, and I volunteered with Camp Able. This was so fulfilling. Mathew took the campers on his pontoon boat Macho, where he moored it up the Jordan on a sandbar and I took whoever want-

ed to ride on the jetski.

City of Diamondhead had their Fireworks display on June 29, the Marina ship store had some of our regular customers and tenants view the display from the lawn of the Marina, "front row seats". It was a fantastic time, and thanks to all who attended.

Revenue at the Marina has increased, thanks to ALL who patronize the ship store and Marina!!

Here are the names of the survey group in the photo: Ginette Atkinson (female dark blue shirt) Tiffany Engle (female yellow shirt) Mustafa Kanat (male navy blue shirt) Paul Frye (male grey shirt) Luis Altamirano-Perez (male yellow shirt)

We're a group of graduate students from University of Southern Mississippi, from the School of Ocean Science and Engineering, we're based at the Stennis Space Center Campus. We are undertaking a Masters in Hydrographic Science program, which is a 12 month program that culminates in a summer survey project which



Ginette Atkinson (female dark blue shirt) Tiffany Engle (female yellow shirt) Mustafa Kanat (male navy blue shirt) Paul Frye (male grey shirt) Luis Altamirano-Perez (male yellow shirt)



Fun with the Marina at Diamondhead!

puts all of our practical skills to the test. At the completion of the course we will be awarded a Category A hydrographic survey

qualification, which is the highest international certification in the field, awarded by the International Hydrographic Organization.

C RAYS AUTOMOTIVE LLC

(228)222-4772

2074 US HWY 90, STE D | BAY SAINT LOUIS, MS 39520

<p>2012 Ford F150, FX 4 painted up and loaded, extremely clean \$19,995</p>	<p>craysautomotive.com</p>	<p>2017 Audi Q3 S line super sporty fully loaded! \$16,995</p>
<p>2021 Nissan Sentra SR fully loaded Super sporty \$13,995</p>	<p>What Our Customers Say About Us</p> <p>★★★★★</p>	<p>2017 Audi A3 convertible loaded super sporty \$14,995</p>

• DH MARINA

We graduate in August.

We have been using specialized sonar equipment to map the seafloor in areas of the Jordan River, Rotten Bayou, and the Diamondhead Marina. Our Multi-beam Echo Sounder sonar provides detailed 3D bathymetry of the seafloor, with very accurate depths,

whilst our Side Scan Sonar detects and images objects and features on the seafloor. In addition to this, we have used a LIDAR system, which provided a detailed point cloud visualization of above ground features such as bridges, marina and boats themselves.

The data we are gathering will be

submitted to NOAA, where it will undergo quality checks, and could potentially be used to update the nautical charts in the area. The last known hydrographic charting survey in the area that we could find was conducted in the early 1970's, and some areas of the bayou are completely uncharted, so this is an exciting project for us, and we hope that it results in some updated nautical charts for the benefit of the Diamondhead community.



Fun with the Marina at Diamondhead!



Fun with the Marina at Diamondhead!

AN EXCITING CHRISTIAN MINISTRY
WITH CONTEMPORARY WORSHIP!

Jacob's Well

July 1988 - to a Holy Word

Sunday Worship at 8:45 & 11 am, Live on YouTube at 11
Bible Study (all ages) 10 am
Wednesday 6:30-7:30 pm

Adult, Youth, and Children's Studies and Programs

A PLACE TO GROW YOUR SPIRITUAL LIFE THROUGH WORSHIP,
MISSION OPPORTUNITIES, ACTIVE CHILDREN AND YOUTH GROUPS,
AND HIGH-QUALITY ADULT BIBLE STUDIES

LOCATION: 29554 VIC FAYE RD., 228-255-2555
JUST EAST AND ACROSS FROM THE BROOKLYN CENTER AND
PRESTIGE FITNESS CENTER AT THE BACK OF DIAMONDHEAD

DR. BILL WARREN, PASTOR
ALAN SIMMONS, WORSHIP MINISTER

A MULTI-GENERATIONAL, FAMILY FOCUSED,
MINISTRY-ORIENTED, SOUTHERN BAPTIST CHURCH
SERVING HANCOCK AND HARRISON COUNTIES

HALLOWEEN PARTY

OCTOBER

25th

7:00 - 10:00

LIVE MUSIC WITH
QUARTER NOTES

COSTUME CONTEST
DRINK SPECIALS



7600 Country Club Circle
Diamondhead, MS 228-255-2918 ext. 3
@ClubatDiamondhead



BACK TO SCHOOL Special

JULY 30 - AUGUST 3

Purchase an entree of \$15 or more, and receive 1/2 off one kids meal. Age limits on the kids menu apply



★★★ LABOR DAY SPECIAL

SEPTEMBER 2, 2024

11:00 - 3:00

**Five Whole Smoked Wings
served with Potato Salad and
Baked Beans
\$16**



7600 Country Club Circle Diamondhead, MS 228-255-2918 ext. 3
@ClubatDiamondhead




**OCTOBER 19, 2024
10:00 - 3:00
THE CLUB AT DIAMONDHEAD
MAIN PARKING CIRCLE**

**Handmade Arts & Crafts,
Jewelry, Local Savories,
Artwork, DJ, Free Shuttle to
Fest from City of Diamondhead
Parking Lot**

LOADS OF FUN!

For vendor information, copy & paste this application link: <https://bit.ly/4aoTmuh>
OR for a printable version & paste this link to our website: <https://bit.ly/4dHcVRD>
OR visit our Facebook page: ClubatDiamondheadFallFest

AUGUST 2024 • THE CLUB AT DIAMONDHEAD NEWS

 **Diamondhead News**

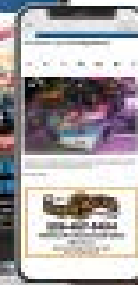
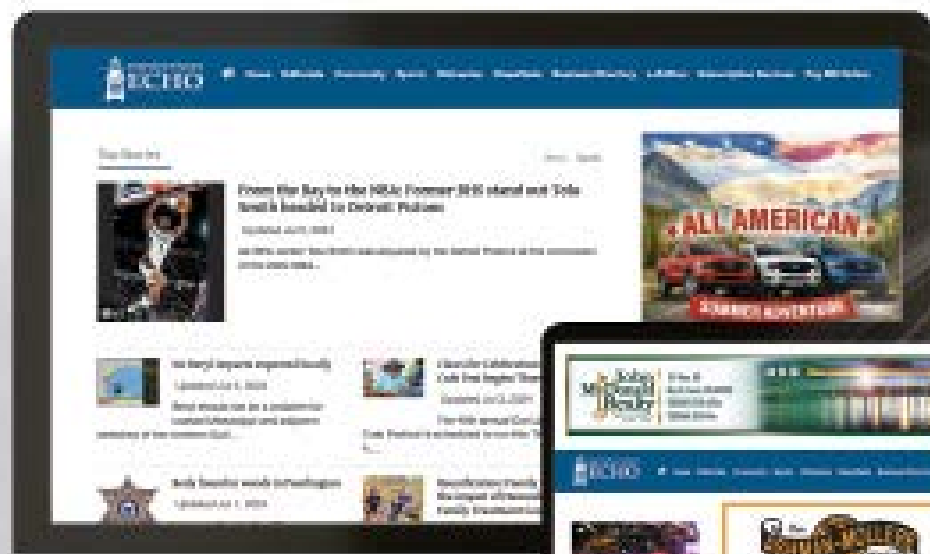
READ LOCAL

SUBSCRIBE TO THE SEA COAST ECHO TODAY FOR JUST

\$49⁰⁰

The Sea Coast Echo has been Hancock County's **COMMUNITY** newspaper since 1892! Our brand is bigger than ever online at www.seacoastecho.com and we have more than 21,000 followers on our Facebook® page, but we need your support to help us continue to offer you the latest and most accurate **LOCAL** news in our print edition week after week. When you subscribe to the Sea Coast Echo for a year, you also automatically get a subscription to our e-edition, so you can read the entire paper, any time you want, either by holding it in your hands or seeing it on your phone, tablet, laptop or home on your desktop, all for one low price.

ECHO
- ON THE GO -
SERVING HANCOCK COUNTY SINCE 1892



— CALL **228.467.5437** FOR **ALL** OF YOUR SUBSCRIPTION AND ADVERTISING NEEDS —



COLDWELL BANKER

**ALFONSO
REALTY, INC.**

Office: 228-255-3550



Sue Layel, Realtor

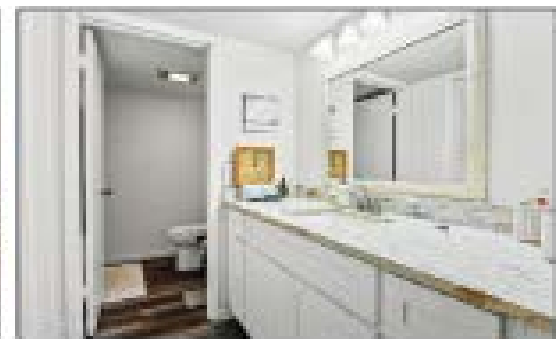
"I answer my phone"

228.224.2559

sue.layel@gmail.com

www.SueMSRealEstate.com

I've **SOLD** almost all of my listings and I can sell yours, too! ☎ Call me today!



103 KONA VILLA | DIAMONDHEAD

3 bed/2 bath - 1438 sqft - \$199,999

No steps! Large 3 bedroom, 2 bath condo on the ground level.
Unit is Move-in Ready. Freshly painted. Walk to the pool. Lots of parking.



**289 LANA UNIT #R
DIAMONDHEAD**

3 Bed/2 Bath - 1410 sqft - \$265,000

Fantastic view of the Golf Course and Road. End unit which is private and quiet. Attic access in the bedroom ceiling - only unit with this pull-down access. Updated wiring & circuit breaker box. Pella windows and sliders. Double hung windows in one bedroom. Custom Levolor Cordless Shades. Ceiling fans, GE Microwave, Frigidaire Dishwasher, Washer & Dryer, Samsung 55" TV and Sound Bar. Lanai Monthly Fee Schedule. Fee includes Water, Sewer, Fire, Garbage, Termites, Exterior Maintenance on Building, Liability Insurance, Grounds & Pool Maintenance, Street Lighting, Pest Control and Smoke Detectors.



**9931 HAMAKUA STREET
DIAMONDHEAD**

4 bed/2 bath - 1808 sqft - \$239,500

Affordable 4 bedroom, 2 bath home ready for a new owner! Open kitchen with lots of space. Formal dining room. The 4th bedroom may be used as an office. Master bedroom suite has a soaking tub, separate shower and walk-in closet. Fireplace in the Living Room. Covered back patio and fenced back yard. Home in great condition.



**654 KINO STREET
DIAMONDHEAD**

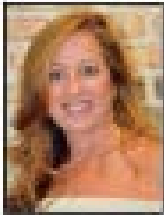
3 Bed/2 Bath - 1687 sqft - \$239,900

Lovely home with a screened porch and fenced yard. Located close to the golf course and the Country Club. Home is move-in ready and in excellent condition.





COLDWELL BANKER

ALFONSO
REALTY, INC.5 star rating on Internet
Real Estate Sites

Betsy Montjoy

D: 228-547-2856

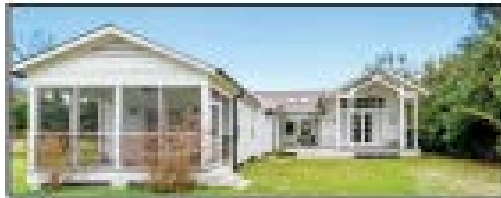
C: 228-467-0244

103 Saint Joseph St | Waveland
0.15 Acre Lot | \$159,000

Cleared lot ready for a custom-built home in a coastal community blending convenience with natural beauty near downtown Waveland and walking distance to the beach.

305 Third St | Bay Saint Louis
4 Bed | 2.5 Bath | 1700 sqft | \$749,000

Renovated historic home in Old Town, Bay St. Louis, featuring details like pine flooring and beadboard accents. Modern kitchen, master bedroom with ensuite, screened porch, fenced backyard and flexible layout. Conveniently located near beach, downtown, marina, and golf course.

845 E Scenic Dr | Pass Christian
3 Bed | 3 Bath | 2500 sqft | \$5,499,000

An exquisite 8.5-acre lot on Scenic Dr. overlooking the Gulf of Mexico. Property includes six parcels extending from Beach Blvd to Second Street. This valuable land is open for new construction and multiple-home development. It's completely fenced and gated at the front and rear entrances. The expansive grounds still have two 1940s cottages that were combined to create a saddlebag cottage with the new addition of a master wing. Use this land as an investment opportunity to build multiple homes or for your private sanctuary.

4015 Cardinal St | Bay Saint Louis
2 Bed | 1 Bath | 854 sqft | \$294,500

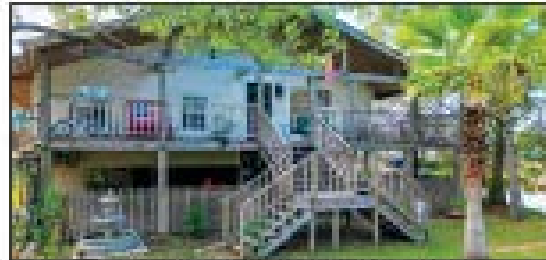
Situated on a double lot, completely fenced in and gated. 100 feet of waterfront, bulk headed, with dock, fish cleaning station, boat lift, and a private boat launch. Completely furnished, including washer and dryer.



Diane Brown

D: 615-584-9444

C: 228-226-1402

5002 Cook St | Bay Saint Louis
2 Bed | 2 Bath | 1700 sqft | \$295,000

This elevated fish camp boasts 1700 sf of open space to entertain and enjoy life on the water w/ 228 ft. of waterfront on 4 Dollar Bayou. Depending on the season, you can fish for freshwater or saltwater fish off your back pier.



Terri Harrison

D: 601-916-3382

C: 228-467-0244

800 W Beach Blvd | Pass Christian
4 Bed | 3.5 Bath | 2725 sqft | \$1,750,000

Introducing a custom-built Beachfront Oasis on one acre in desirable Pass Christian, nestled under majestic oaks with a breathtaking view of the Gulf of Mexico white sand beaches.

0 Canal Street Lot #3,4
Pass Christian
25 Acre | \$45,000

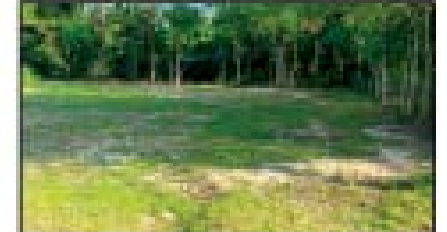
Two waterfront parcels being sold together. Close to entertainment, beaches, shopping and restaurants.

5034 Killmanjaro St | Bay Saint Louis
3 Bed | 3 Bath | 2000 sqft | \$385,000

Public boat launch is directly across Hwy 603. Only a 10 minute drive to Old Town Bay St Louis or Diamondhead and just 45 minutes to New Orleans.

214 E 2nd St | Pass Christian
.18 Acre | \$175,000

Build your dreamhouse in beautiful downtown Pass Christian. Walk to the beach, shops and restaurants. Sit on your porch and enjoy the Pass Mardi Gras Parade and Cruising the Coast.

413 Necaise St | Waveland
.13 Acre | \$69,000

Beautiful lot within walking distance to the beach. Perfect lot for your dream house.

Testimonials

"Diane is so helpful and patient. Very knowledgeable. She knows her business. We love her and we're going to miss seeing her. Thank you Diane for helping us find our home!"

-Art W.



Lindsey Lind Richard
Coldwell Banker Alfonso Realty, Inc.

D: 228-216-8512

lindseylindrichard@gmail.com

O: 228-467-0244



**COLDWELL
 BANKER**

**ALFONSO
 REALTY, INC.**



5163 Forrest St | Bay Saint Louis
 2 Bed | 2 Bath | 1068 sqft | \$249,000

This home sits on an oversized lot within walking distance to the Gulf and just a quick car or bike ride to the Casino. Fishing, Crabbing, Swimming you can do it all. This Camp has been recently updated and is ready for new owners: New Stainless Appliances, Updated vanities, new flooring, New AC units and the list continues.



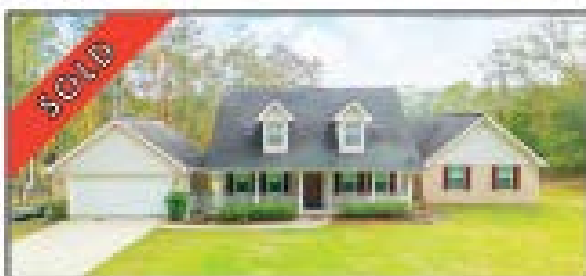
2 Possum Way | Diamondhead
 2 Bed | 2 Bath | 1020 sqft | \$166,500

Great Living space with spacious back porch. Recently updated with new interior and exterior paint. The Oaks offers your yard being mowed on a schedule and is close to entertainment. Enjoy the amenities: the Golf Course, 4 pools and Tennis Courts. This home is the ideal retirement and/or vacation home.



63724 N Diamondhead Dr | Diamondhead
 3 Bed | 2 Bath | 1750 sqft | \$184,999

3 Bed/ 2 Bath with Stainless Appliances, Granite Countertops and an Oversized Fenced Backyard Covered Parking, Bonus Office Space and Conveniently located in the Front of Diamondhead and just a quick walk to the nearby pool. Affordable Flood Policy in Place!



39 Cove Lake Rd | Carrere
 4 Bed | 2.5 Bath | 2035 sqft | \$324,000

Beautiful Updated Lakesfront Home in Carrere that is on 17 acres and ready for a growing family today! Did I mention there are 2 Master Bedrooms! Vinyl Flooring, Black Stainless Appliances, Brand new Fence and Deck are just a few features of this home. Come see this well maintained home today!



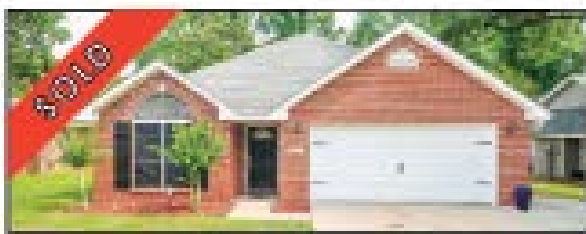
411 Necaise St | Waveland
 3 Bed | 2 Bath | 1701 sqft | \$355,000

Newly Renovated 1900s Beach Bungalow, located two blocks from the beach! Seller has completed the entire project from saving the original heart of pine flooring, sourcing 100 year old cypress and mahogany doors from NOLA. Extras include double insulation- interior included and two primary bedrooms.



1 Fox Trot | Diamondhead
 3 Bed | 2 Bath | 1350 sqft | \$185,000

Updated home featuring Stainless Appliances, Walk-in Pantry, Hardwood floors, Updated Tile Showers, Granite Counters, Fenced backyard and a Doggie Door. The Oaks Property Association offers Routine Lawn care and much more so come see this Perfect Starter home or Rental Today!

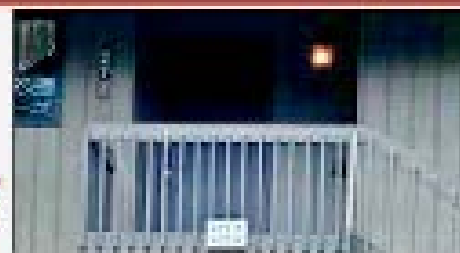


9827 Ana Hulu St | Diamondhead
 3 Bed | 2 Bath | 1489 sqft | \$241,000

This updated home features a newer roof and ac unit as well as Stainless Appliances. Enjoy a spacious and private fenced backyard, Roomy Double Car Garage, and wood and tile floors throughout. The master suite includes a deep soaking tub and walk-in closet.

**ALFONSO
 PROPERTY
 MANAGEMENT...**
(228) 255-5388

**CALL TO MAKE
 AN VIEWING
 APPOINTMENT**



277 Lanai Village | Diamondhead
 2 Bed | 2 Bath | 940 sqft | Rent: \$1200/mo

Freshly painted - New Flooring
 Furnished Condo. Located On The Second Floor,
 Washer & Dryer in Unit. Great view Of The Pool



123 Wenmar Ave | Pass Christian
 2 Bed | 2.5 Bath | Rent: \$1721/mo

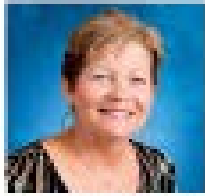
Remodeled in April 2021 with - fresh paint, new flooring, new stainless appliances.
 Pass Christian - 1 block from the beach.
Appointment Required



COLDWELL BANKER

**ALFONSO
REALTY, INC.**

Diamondhead Office
228-255-3550 | 4300 Gex Rd.



Anita Sanderford
228-216-2005



Betsy Nolan
228-216-8793



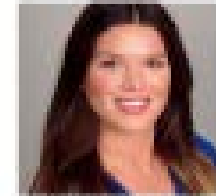
Brent Allison
228-216-1269



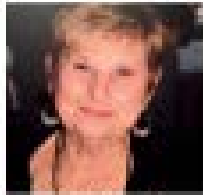
Carmen Fairo
228-343-1184



Carol Shippey
228-332-6993



Gina Grotkowski
228-216-3880



Jackie Hollfield
228-363-1964



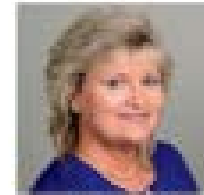
Jackie Miller
Managing Broker



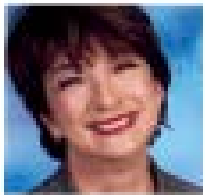
Jessica Russell
228-343-1267



John Hall
228-669-6111



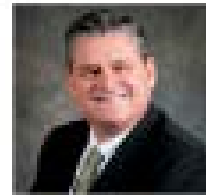
Lynn Grege
228-223-9903



Marsha Buras
985-285-4690



Nell Frisbie
228-493-2024



Patrick Nolan
228-547-8657



Sue Layol
228-234-2559



Wee Sanderford
228-342-5766



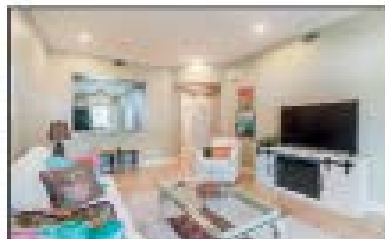
Whitney Harmann
504-256-4969



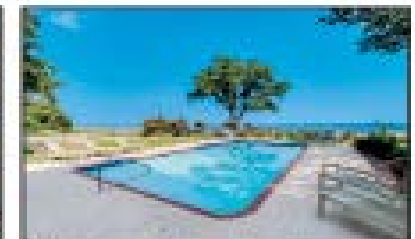
Nell Frisbie
D: 228-493-2024
O: 228-255-3550



**1100 W Beach Boulevard
Unit #309 | Pass Christian**
2 Bed | 2 Bath | 1281 sqft
\$379,900



This 2 bedroom, 2 bath unit has views of the Beach and Gulf. Both the living room and the primary bedroom have direct access to the balcony. Off the kitchen is a small room that can be used as a dining nook, office or third bedroom. Pass Christian amenities include gated entrance, security, covered parking, atrium/lobby for visiting with other residents, workout room, clubhouse meeting area, elevators and an inground, saltwater pool overlooking the beach. HOA dues cover building security, part-time manager, building, grounds & pool maintenance, insurance, pest control, water/sewer/garbage and satellite TV/Internet. No short term vacation rentals allowed. Rentals must be for a minimum of 6 months.



Brent Allison
D: 228-216-1269
O: 228-255-3550



8185 Ridgewood Dr | Kilm
3 bed | 2.5 bath | 2775 sqft | \$449,900

Situated in Ridgewood Subdivision on 3.19 acres, this house features a split floor plan, crown molding, formal dining room, spacious kitchen with granite countertops, gas cooktop, large living room with gas fireplace, master bedroom with his & her closets, master bathroom with custom shower & tub, double vanity, bedrooms 3 & 4 with jack & Jill bathroom, double car garage, fenced backyard.



612 Highland Dr | Bay Saint Louis
3 bed | 2 bath | 2546 sqft | \$459,900

Looking for an updated brick house in Bay St. Louis? Here is an opportunity on a quiet street with a concrete circle driveway on a 100' lot. This 3 bed, 2 bath house offers a whole home generator, new luxury vinyl flooring and new vinyl windows, & so much more.

CALL OR STOP BY

Any of our 6 locations across the MS Gulf Coast

1. 4300 Gex Rd, Diamondhead | (228) 255-3550
2. 1188 US-90, Bay St Louis | (228) 467-0244
3. 9153 Lorraine Rd, Gulfport | (228) 287-1000
4. 156 Nixon St, Biloxi | (228) 207-2308
5. 2003 Blenville Blvd, Ocean Springs | (228) 875-1272
6. 934 Jackson Ave, Pascagoula | (228) 769-7777



COLDWELL BANKER
ALFONSO
REALTY, INC.



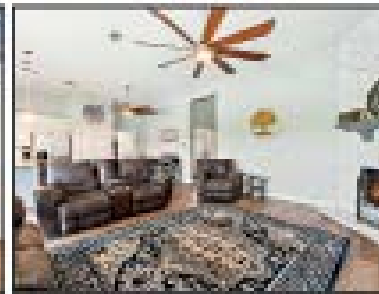
**5 star rating on Internet
Real Estate Sites**



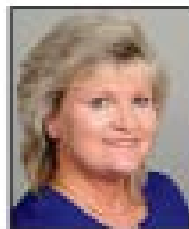
Barbara Gay
D: 228-861-7564
O: 228-287-1000



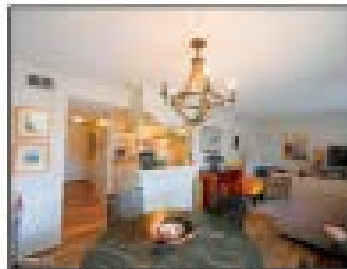
16156 Ball Rd | Pearlington
3 Bed/2 Bath | 1570 sqft | \$298,000



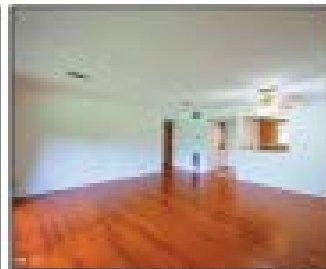
SELLER TO PAY 2,000 TOWARDS CLOSING COST! This is not just another waterfront property, but a completely redone wonderful place for your family. 3 bedrooms, 2 fully reequipped baths, large primary suite, new flooring throughout, additionally there are bunk beds, large inside utility room and storage galore. NOT TO MENTION A BOAT SLIP AND BULKHEAD ON THE 121' OF WATERFRONT!



Lynn Greco
D: 228-223-9903
O: 228-255-3550



**132 Molokai Unit #G
Diamondhead**
1 Bed/1 Bath | 640 sqft
\$109,000



**262 Lanai Village Unit #T
Diamondhead**
2 Bed | 2 Bath | 960 sqft
\$176,000



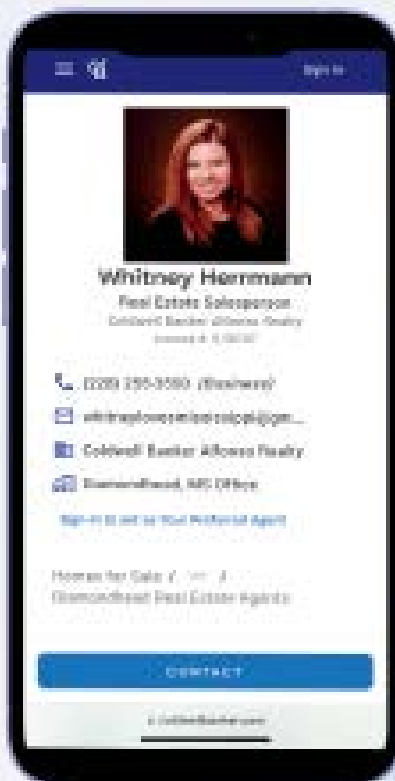
**134 Lakeside Villa Unit #F
Diamondhead**
1 Bed/1 Bath | 640 sqft
\$108,900



**85537 W Diamondhead Dr
Diamondhead**
2 Lots | 0.46 Acre
\$62,000



**15067 Chickesaw Rd
Kiln**
0.11 Acre | Jordan River
\$110,000



Experience Matters!

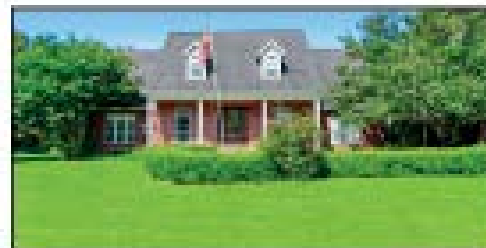
With a proven track record of successful sales, my experience is your advantage. Contact me today and let's get your home SOLD

LET'S CONNECT!

SCAN HERE!



Whitney Herrmann
REALTOR®
O: 228-255-3550
D: 504-258-4969



155 Burgetown Rd | Carriere
5 Bed/4.5 Bath | 3485 sqft | \$614,999



58 Boaz Place | Picayune
11.78 Acres | Waterfront | \$124,999



912 Central Ave | Picayune
3 Bed/2 Bath | 1250 sqft | \$187,900



115 Woodmont Dr | Picayune
Listed by Whitney Herrmann



BUSINESS BROWSER

INSURANCE, HOME CARE, MUSIC LESSONS, SHOPPING, LAWN & GARDEN BUSINESSES ARE FOUND BELOW

TO ADVERTISE IN THE DIAMONDHEAD NEWS OR FOR SUBSCRIPTION INFORMATION, PLEASE CALL JANET AT 601-850-3939.

11 COSTLY HOME INSPECTION PITFALLS

Free Report reveals what you *Need to Know* before you list your Diamondhead home for sale.



Free recorded message, avoid talking to anyone
Dial 1-855-729-8380
Enter ID# 1003
MS Gulf Coast Real Estate Resource

Not intended to solicit buyers or sellers currently under contract. Copyright © 2024

IN-FAITH CONSTRUCTION

Small Porches • Small Additions • Remodels
Decks • Home Repairs • Trim

Owner: James Steele

Over 40 Years of Experience

601-896-9344
601-748-2339
Bay St. Louis, MS



LOWEST INSURANCE RATES ON THE COAST FOR HOME, AUTO, BOATS, TOYS, AND ALL BUSINESS RISKS

CALL OR TEXT US
(228) 466-4498

Angelyn Treonel Zeelingue
info@southgroupgulfcoast.com



We make Saving Easy

IRON MAGNOLIA ANTIQUES

- Visit once & you will be back -



- One-Of-A-Kind Gems & Antiques. You'll be pleasantly shocked.
- Explore 9 Large Rooms full of Vintage Antiques, Pottery, Stained Glass & Elegant Glassware.
- Walk our Lawn & Garden areas for Fountains, Urns, Pots and Concrete Garden Features to set up your Garden.

228.918.6468 | Open Fri., Sat. & Sun. from 12pm to 5pm
6030 Menge Avenue, Pass Christian, MS 39571



Now is the Time to Plant

Fruit • Flowering • Shade Trees

Your Full-Service Garden Center

HOURS: Mon-Sat 8:30-5:00
www.pinehillsnursery.net
228-255-9645
7434 Casvus Rd Pass Christian

Farmer's MARKET
Diamondhead

FRIDAY 9 AM - 1:00 PM
5000 DIAMONDHEAD CIRCLE,
DIAMONDHEAD, MS 39525
EVERY FRIDAY AND 3RD SUNDAY

Diamondhead News



Diamondhead News

PRSR STD
U.S. POSTAGE
PAID
BATON ROUGE, LA
PERMIT NO. 88

7610 Country Club Cir., Diamondhead, MS 39525



PROGRESSIVE PAYOUTS

THROUGH SEPTEMBER

Every Monday-Wednesday • Drawing at 7 p.m.

One winner each night will GEAUX FOR THE GOLD and choose a Gold Bar to win either \$100 Free Slot Play or the current Cash Progressive!

Each day the Cash Progressive Gold Bar is not chosen, the Cash Progressive payout will increase by \$250! Earn entries for every 120 Slot Points or \$1 Table Games Comp Dollar each promotional day. Entries must be activated after 5 p.m. for that day's drawing.

*One winner and two alternates will be drawn each promotional night at 7 p.m. Alternates will receive \$100 Free Slot Play.
Must be present to win. See Players Services for details.*

SILVER SLIPPER
CASINO & HOTEL

www.silverflipper-ma.com • 1-888-SLIPPER • 1-888-354-3737
5000 South Beach Blvd. • Bay St. Louis, MS 39530